

MUDM00T 981015 / SW  
 -EPFER 01/16/2010



SCHLAEPFER

# Charge Amplifier LV301 (preliminary data sheet)

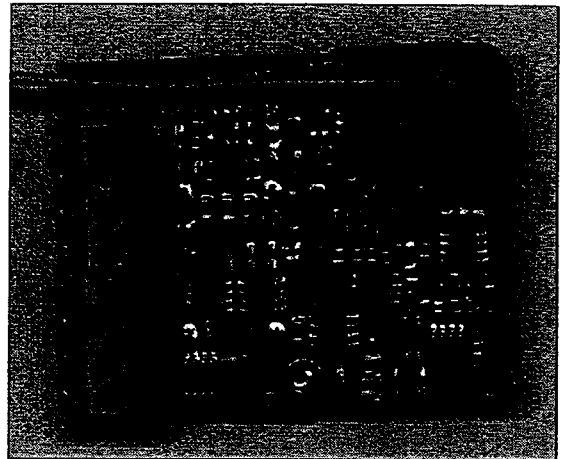
II 19/10-21

## Features

Low cost open frame version  
 Semiconductor Reset  
 CMRR +/- 5V  
 Low Drift  
 Frequency Response DC to 10KHz  
 Accuracy < 0.5%

### Options:

Voltage and Current Output  
 4-20mA (0-20mA)  
 Advanced EMC Protection  
 BNC, TNC, MiniCoax Connectors



## Technical Datas

Supply Voltage	+15..35VDC, recommended 24V
Current consumption	20mA, no load
Output current	4..20mA
Load (Vss+24V)	0..800 Ω, recommended 500Ω
Working Temperatur	-20°C...+70°C
Output voltage (opt)	0..±10V
Load	> 10kΩ
Time constant	> 50'000 s
Accuracy	< 0.5%
Zero Offset (Reset active)	< 0.4 o/oo of F.S
max. Drift (at 25°C)	< 0.15 pC/s
max. Drift (at 50°C)	< 1 pC/s
typ. Drift (at 25°C)	< 0.05 pC/s
Frequency Response	DC..10kHz (Acc. 2%)
Digital Inputs Low	< 7V
High	> 12V
Mechanical outline LV301	51 x 65 x 25 mm <sup>3</sup>

SV0014 Rev. C

$$12mA \pm 8mA = \pm 5'000pC$$

## PCB Drawing, Pin Connection

