

**CI33 Series 2.54mm(.100") DIP Headers**

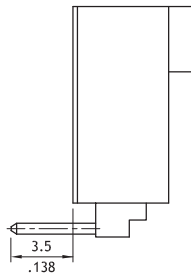
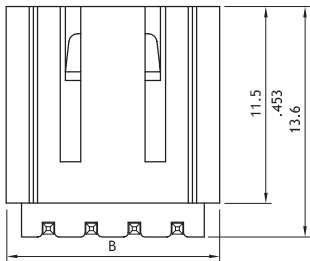
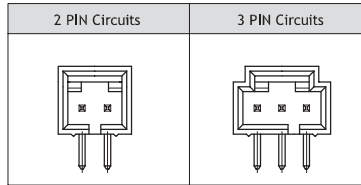
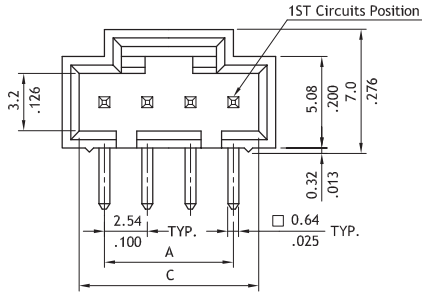
CI

- Box type with locking slot
- Mates with CI33 Single row housing
- Insulator: Glass filled polyester UL 94V-0 , Color Black
- With Tin plated 0.64mm square pin

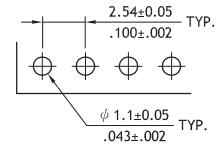
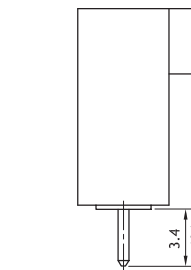
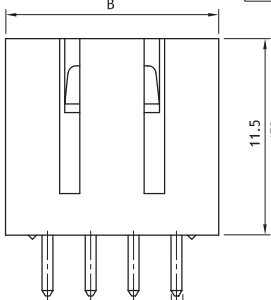
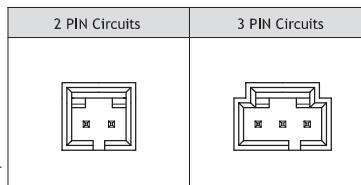
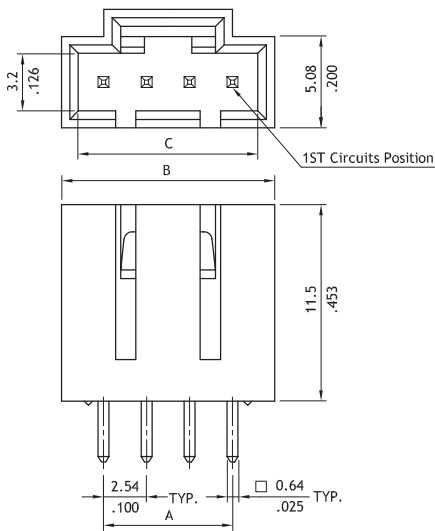
**RoHS** Compliant



**RU RU**:E159616



Circuits	Dimension		
	A	B	C
2	2.54(.100)	7.6(.299)	5.52(.217)
3	5.08(.200)	10.2(.402)	8.06(.317)
4	7.62(.300)	12.7(.500)	10.6(.417)
5	10.16(.400)	15.3(.602)	13.14(.517)
6	12.7(.500)	17.8(.701)	15.68(.617)
7	15.24(.600)	20.3(.799)	18.22(.717)
8	17.78(.700)	22.9(.902)	20.76(.817)
9	20.32(.800)	25.4(1.000)	23.3(.917)
10	22.86(.900)	28.0(1.102)	25.84(1.017)
11	25.4(1.000)	30.5(1.201)	28.38(1.117)
12	27.94(1.100)	33.0(1.299)	30.92(1.217)
13	30.48(1.200)	35.6(1.402)	33.46(1.317)
14	33.02(1.300)	38.1(1.500)	36.0(1.417)
15	35.56(1.400)	40.7(1.602)	38.54(1.517)
16	38.1(1.500)	43.2(1.701)	41.08(1.617)
17	40.64(1.600)	45.7(1.799)	43.62(1.717)
18	43.18(1.700)	48.3(1.902)	46.16(1.817)



Recommended P.C. Board Layout

**Ordering Code**

**1** **2** **3** **4** **5** **6**  
**CI33 18 P 1 V 10**

- 1** Series No.
- 2** No. of Circuits: 02 to 18
- 3** P= DIP header
- 4** Plating:  
 1= Tin over Nickel  
 2= Gold flash over Nickel
- 5** Type:  
 V= Vertical  
 H= Right angle
- 6** Other options:  
 10= Color Black (Standard)  
 \*Special options consult manufacturer

WIRE TO BOARD