

NOTES:

1. SPECIFICATIONS:

ELECTRICAL:  
 WITHSTANDING VOLTAGE: MINIMUM 1250 V RMS @ SEA LEVEL  
 INSULATION RESISTANCE: INITIAL 5000 MEGOHMS MAXIMUM, 1000 MEGOHMS MIN. AFTER ENVIRONMENTAL TESTING.  
 CONTACT RATING: 5 AMPS  
 CONTACT RESISTANCE: 2.7 MILLIOHMS MAX.

MATERIALS:  
 INSULATOR: WHITE UL94V-0 RATED GLASS FILLED POLYESTER  
 CONTACT: COPPER ALLOY  
 CONTACT AREA PLATING: GOLD OVER NICKEL,  
 CONNECTOR SHELL: STEEL, PLATING ZINC WITH CLEAR CHROMATE.

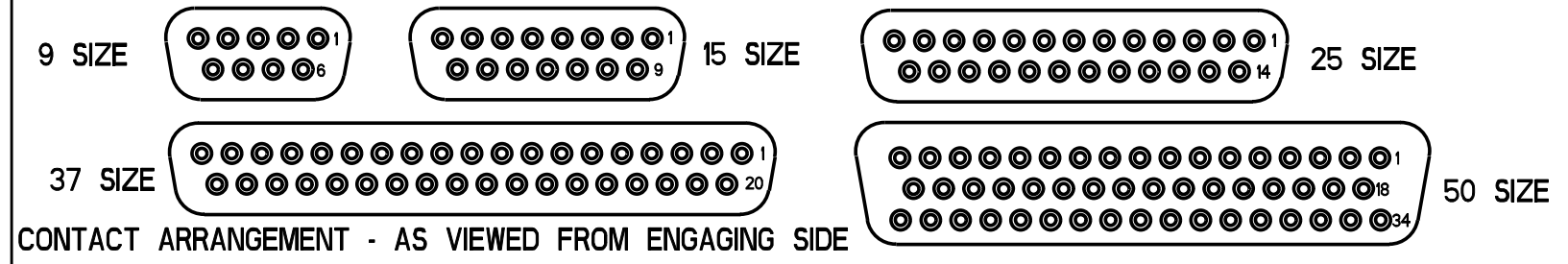
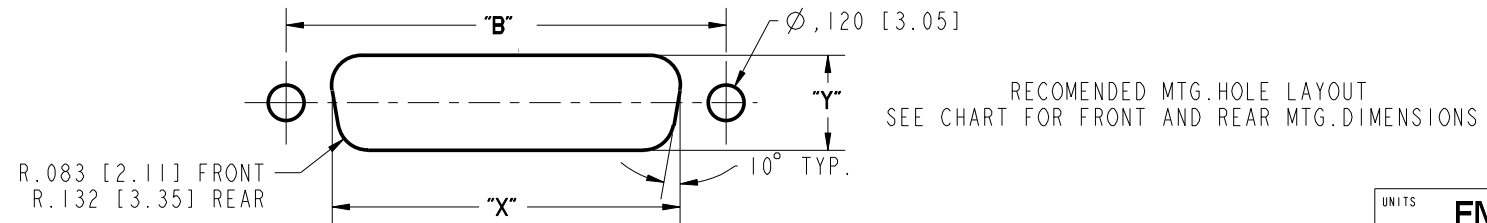
ENVIRONMENTAL:  
 OPERATING TEMPERATURE: -65°C TO +125°C

TERMINATION:  
 2. TERMINALS ARE INTENDED (BECAUSE OF THE FLOAT) TO BE HAND HAND WIRE WRAPPED ONLY. WIRE WRAP # 28 & 30 AWG WIRE.

3. DIMENSIONS IN [ ] ARE IN MILLIMETERS.

DRAWING REVISIONS			
REV	DOCUMENT	APP	DATE
A	DO 05-1094	AKB	1/7/06
B	ECN 06E465		

NUMBER OF POSITIONS	SELECTIVE GOLD FLASH PLATING (.120" [3.05] MTG. HOLES)		WIRE WRAP TAIL LENGTH	DIMENSION							FRONT MOUNTING HOLE DIMENSIONS		REAR MOUNTING HOLE DIMENSIONS	
	PART NO.	FACTORY NO.		"A"	"B"	"C"	"D"	"E"	"F"	"G"	"X"	"Y"	"X"	"Y"
9	DEH-9S-F179	702 11 09 030	.375 [9.52]	1.213 [30.81]	.984 [24.99]	.640 [16.26]	.308 [7.82]	.494 [12.55]	.759 [19.28]	.422 [10.72]	.874 [22.20]	.513 [13.03]	.806 [20.47]	.449 [11.40]
	DEH-9S-F179C	702 11 09 050	.585 [14.86]											
15	DAH-15S-F179	702 11 15 030	.375 [9.52]	1.541 [39.14]	1.312 [33.32]	.968 [24.59]	.308 [7.82]	.494 [12.55]	1.083 [27.51]	.422 [10.72]	1.202 [30.53]	.513 [13.03]	1.134 [28.80]	.449 [11.40]
	DAH-15S-F179C	702 11 15 050	.585 [14.86]											
25	DBH-25S-F179	702 11 25 030	.375 [9.52]	2.088 [53.04]	1.852 [47.04]	1.508 [38.30]	.308 [7.82]	.494 [12.55]	1.625 [41.28]	.422 [10.72]	1.743 [44.27]	.513 [13.03]	1.674 [42.52]	.449 [11.40]
	DBH-25S-F179C	702 11 25 050	.585 [14.86]											
37	DCH-37S-F179	702 11 37 030	.375 [9.52]	2.729 [69.32]	2.500 [64.50]	2.156 [54.76]	.308 [7.82]	.494 [12.55]	2.272 [57.71]	.422 [10.72]	2.391 [60.73]	.513 [13.03]	2.326 [59.08]	.449 [11.40]
	DCH-37S-F179C	702 11 37 050	.585 [14.86]											
50	DDH-50S-F179	702 11 50 030	.375 [9.52]	2.635 [66.93]	2.406 [61.11]	2.062 [52.37]	.308 [7.82]	.494 [12.55]	2.178 [55.32]	.422 [10.72]	2.297 [58.34]	.513 [13.03]	2.218 [56.34]	.449 [11.40]
	DDH-50S-F179C	702 11 50 050	.585 [14.86]											



**ROHS COMPLIANT**

UNITS	ENGLISH	PRO/E	MODELED BY: V. SKUZA
DO NOT SCALE DRAWING	DRAWN BY V. SKUZA	DATE 06/14/05	TITLE D-SUB WIRE WRAP, 375/.585 LG. CONNECTOR SKT. ASS'Y (.120" MTG HOLES)
	DESIGN ENGINEER A. BALI	06/14/05	MATERIAL CONTROL SPEC NUMBER
	DESIGN ENGINEERING MGR. A. SHAH	07/09/05	MATERIAL SPEC NUMBER FINISH PROJECT NUMBER C14716
	MFG. ENGINEERING J. OCEGUERA	07/06/05	CAD FILE NUMBER DRAWING NUMBER DXHXS F179 D*H-XXS-F179
	QUALITY ASSURANCE A. VAZQUEZ	07/07/05	CAGE IDENT NO.   SIZE 71785   B SCALE 1:1 SHEET 1 OF 1

D  
C  
B  
A

D  
C  
B  
A

8 7 6 5 4 3 2 1

8 7 6 5 4 3 2 1