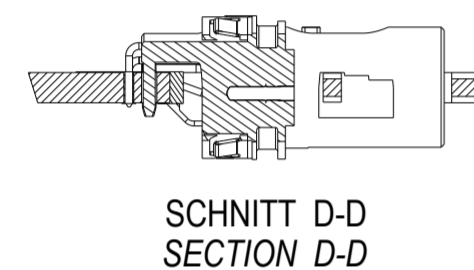
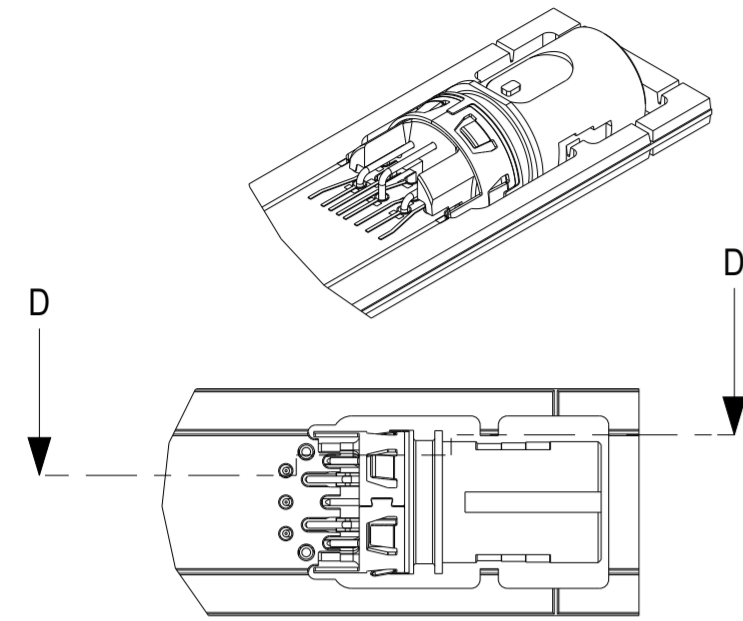


Leiterplatten Optionen / PCB options

Leiterplattendicke 2 mm
Layoutempfehlung siehe 225508

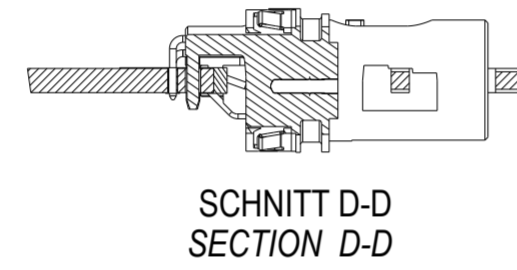
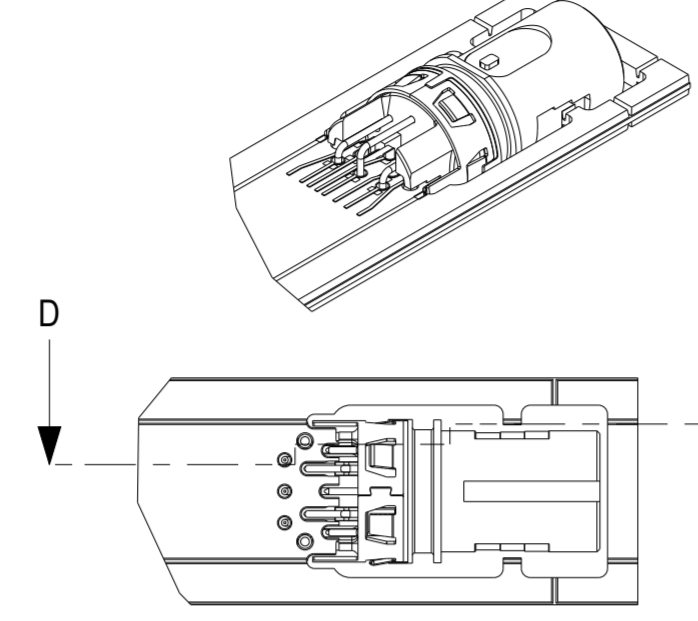
PCB thickness 2 mm
For recommended dims see 225508



SCHNITT D-D
SECTION D-D

Leiterplattendicke 1,6 mm
Layoutempfehlung siehe 225508

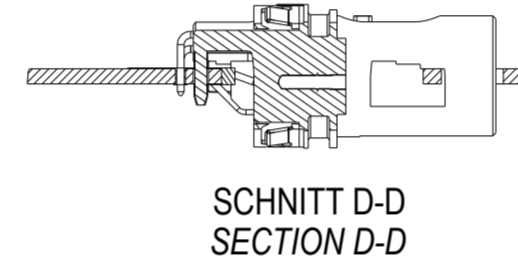
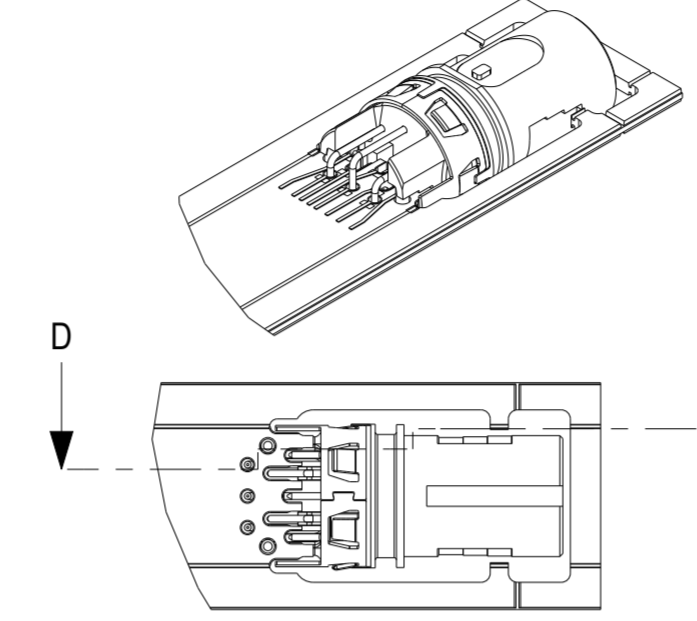
PCB thickness 1,6 mm
For recommended dims see 225508



SCHNITT D-D
SECTION D-D

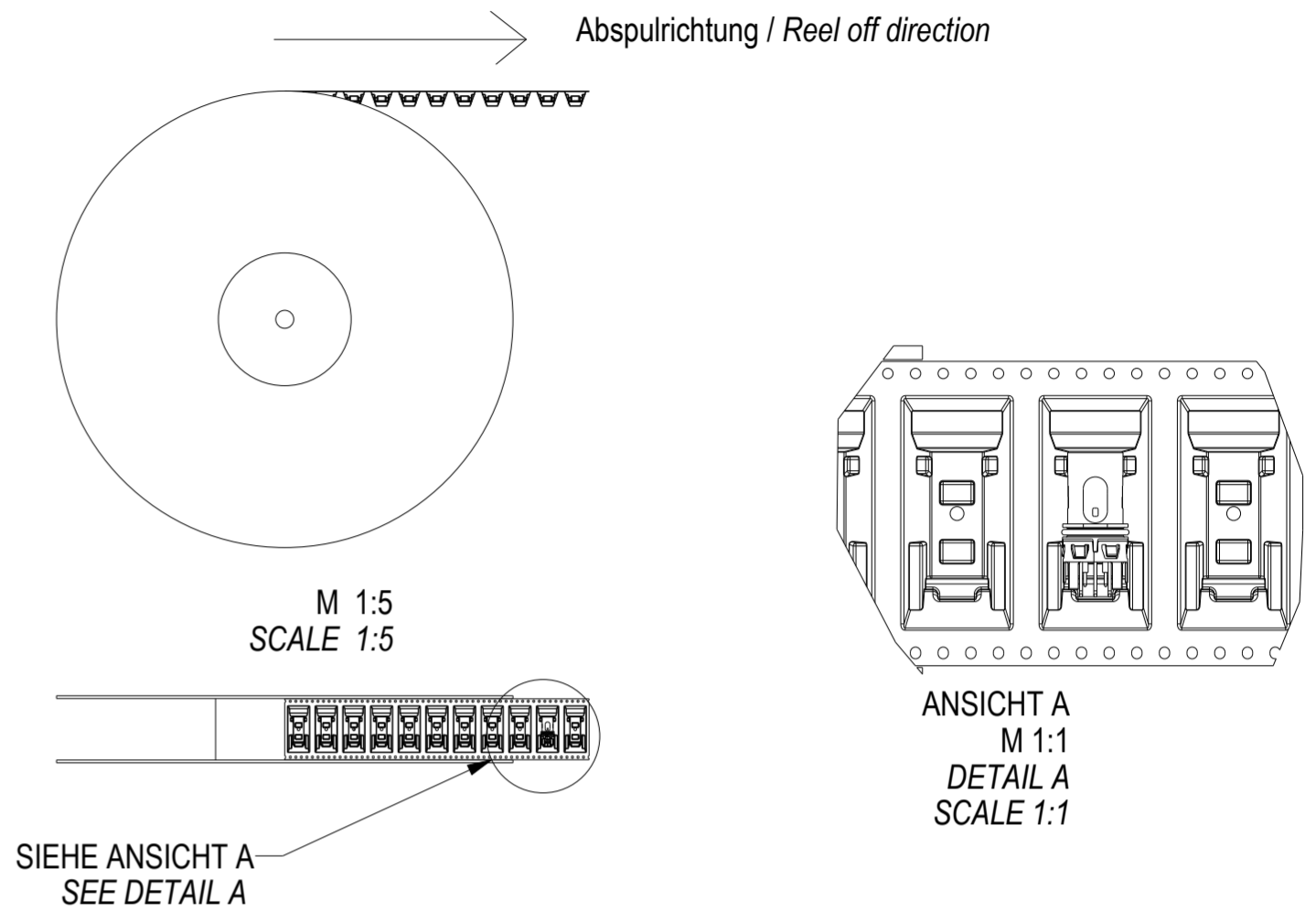
Leiterplattendicke 1 mm
Layoutempfehlung siehe 225508

PCB thickness 1 mm
For recommended dims see 225508



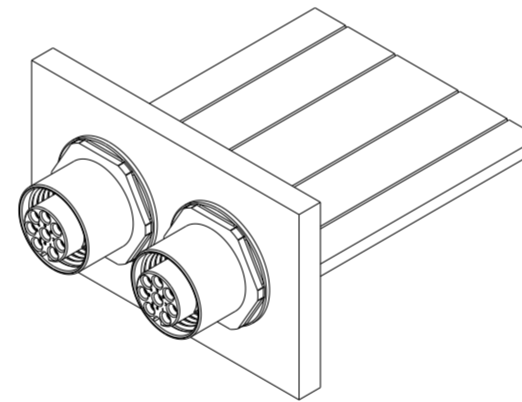
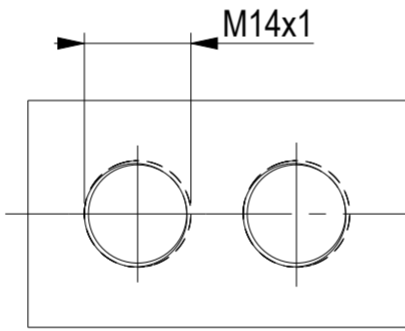
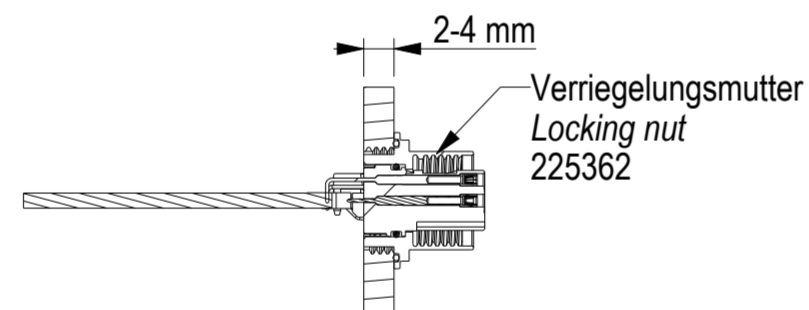
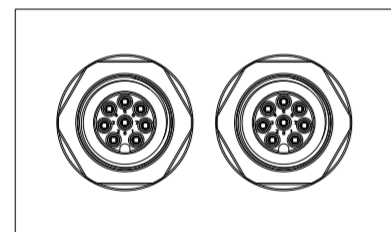
SCHNITT D-D
SECTION D-D

Verpackung / Packaging tape and reel (T&R)

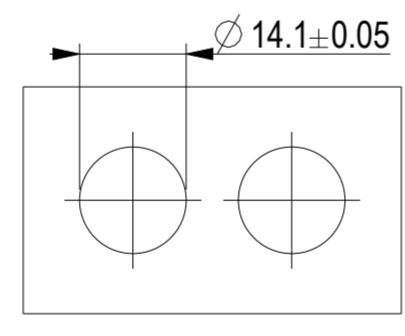
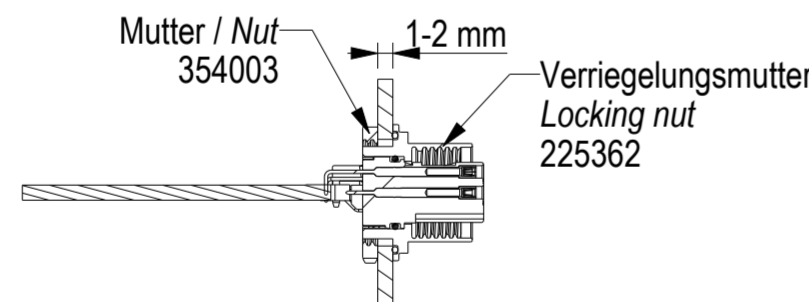
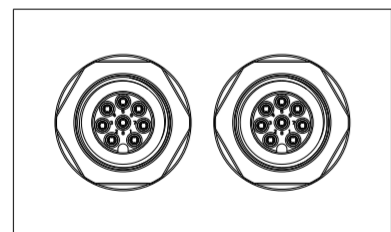


Anwendungsbeispiel / Application example

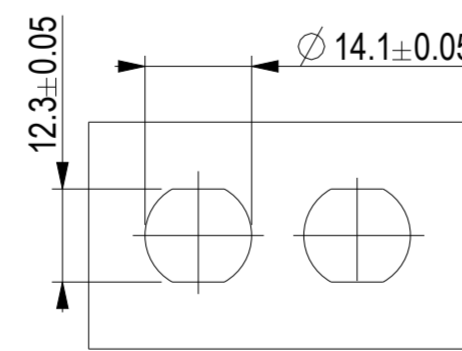
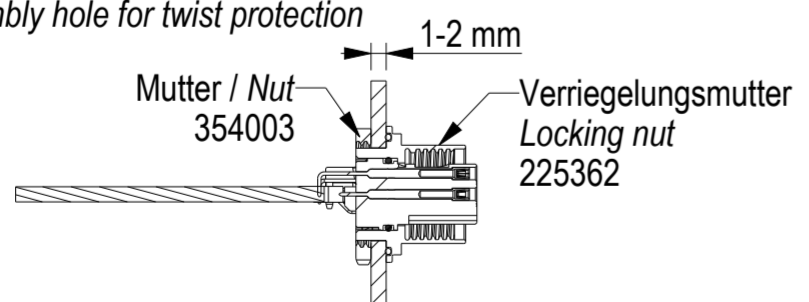
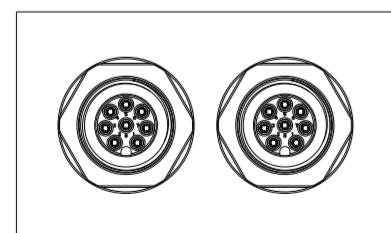
Gewinde-Löcher / Thread holes



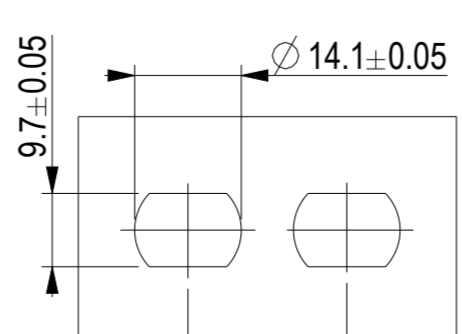
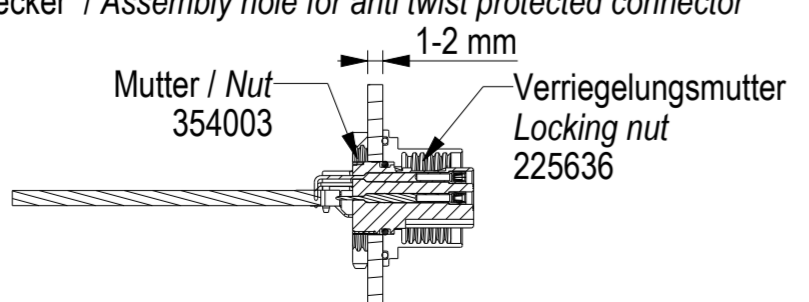
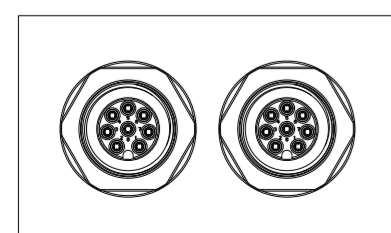
Standard-Löcher / Standard holes



Montageloch für Verdrehsschutz / Assembly hole for twist protection



Montageloch für Verdrehgeschützten Stecker / Assembly hole for anti twist protected connector



Maßempfehlung für Gehäuseintegration siehe 225406
Recommended dimensions for integration in housing see 225406

Technische Daten siehe Document 225407
Technical data see document 225407

225300	2	no	no	no	8	1,2,3,4,5,6,7,8	T&R	
225301	2	no	yes	no	8	1,2,3,4,5,6,7,8	T&R	
225455	2	no	no	yes	8	1,2,3,4,5,6,7,8	T&R	
225615	2+3	yes	no	yes	8	1,2,3,4,5,6,7,8	T&R	
225616	2+3	yes	no	yes	8	1,2,3,4,5,6,7,8	T&R	

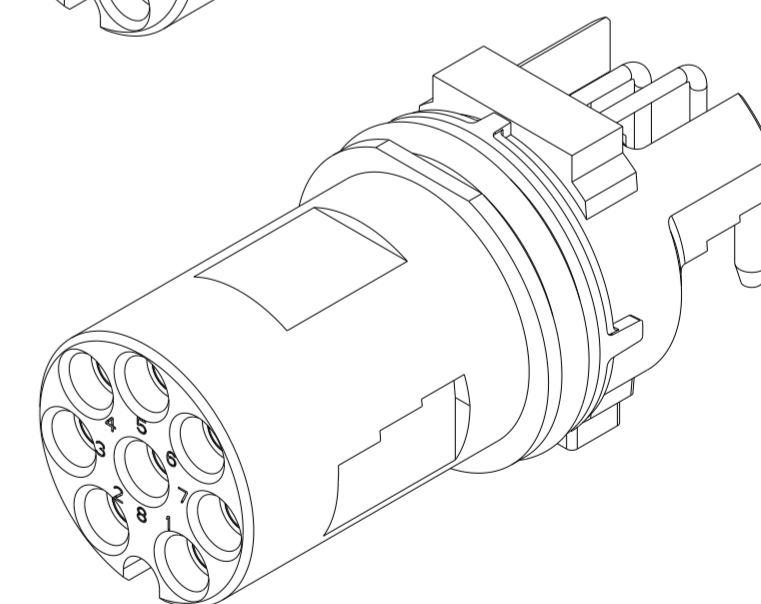
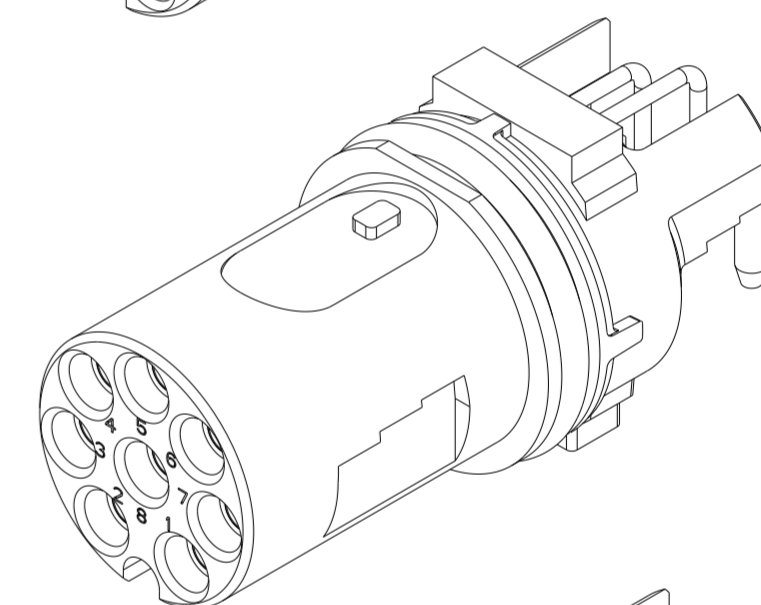
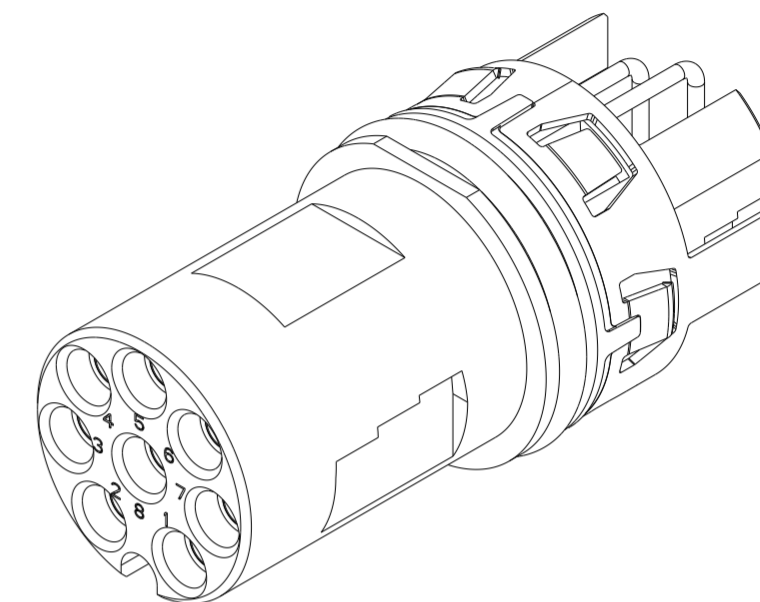
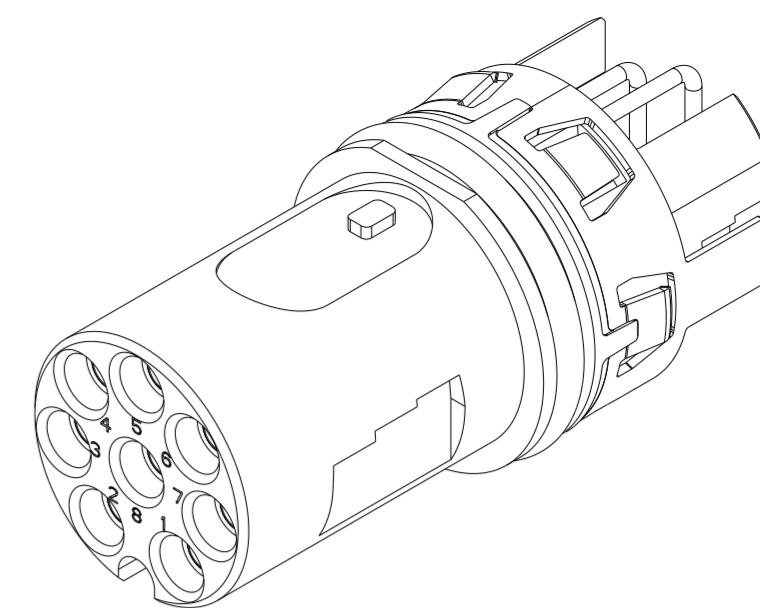
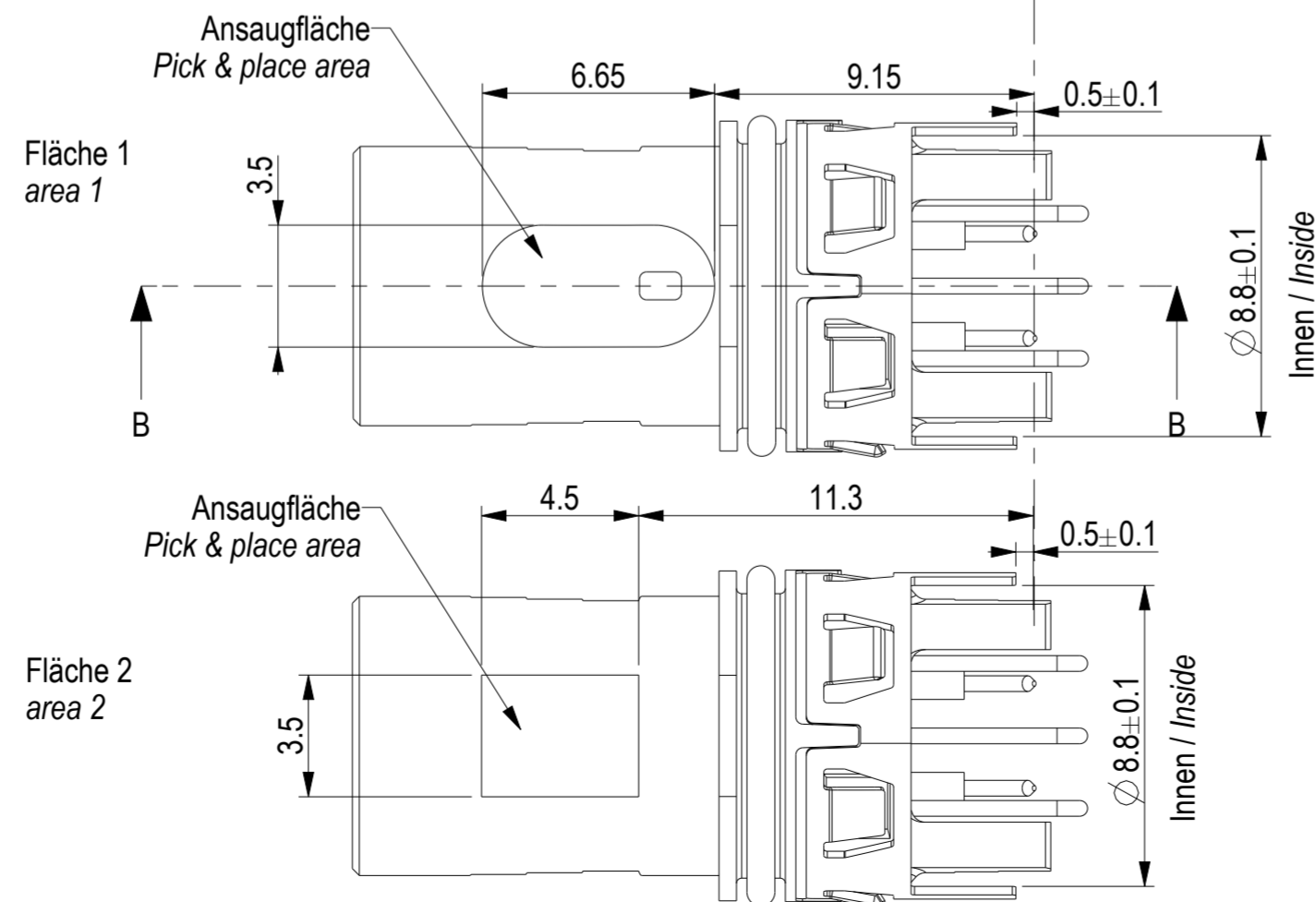
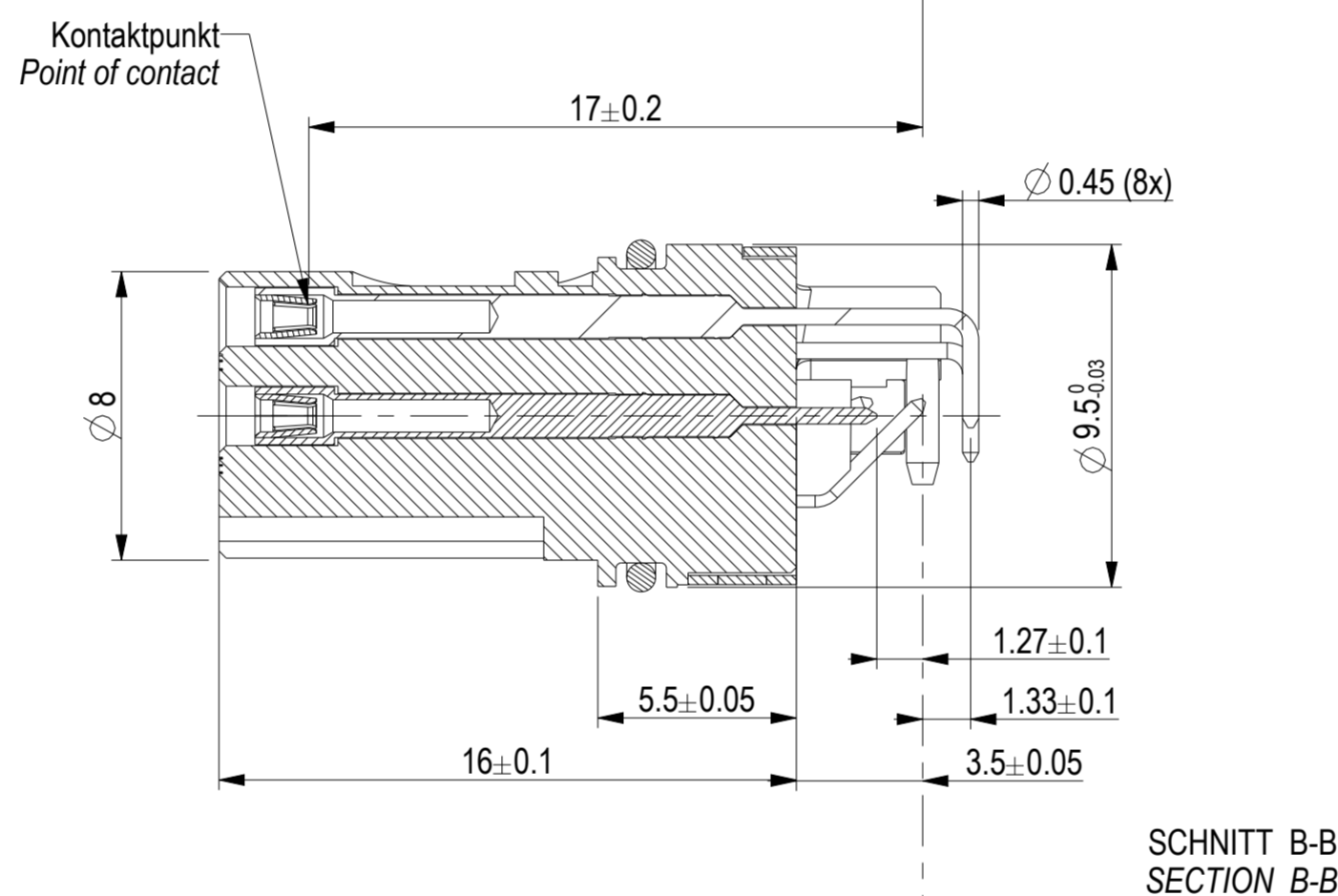
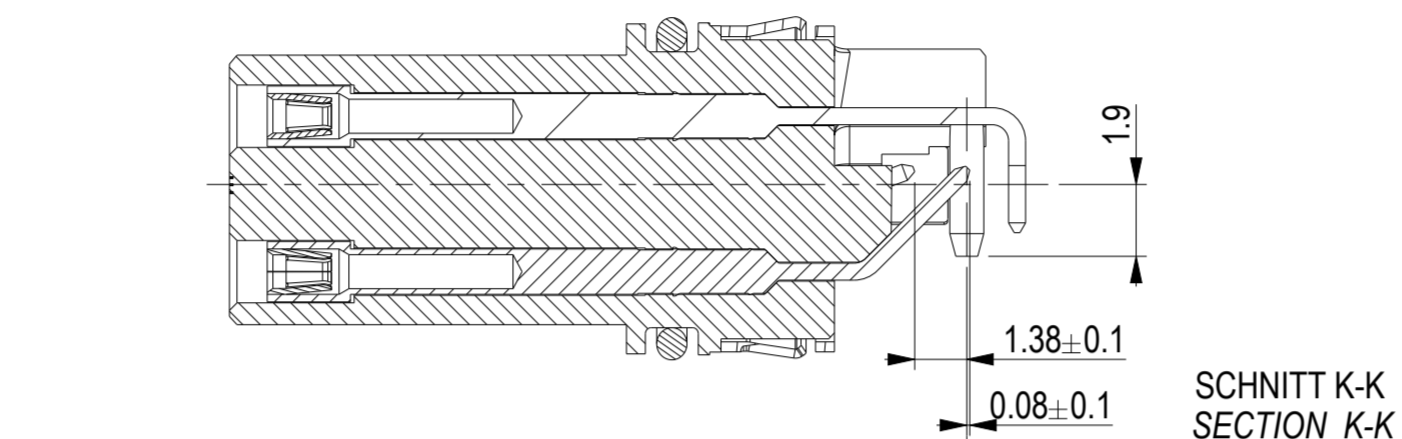
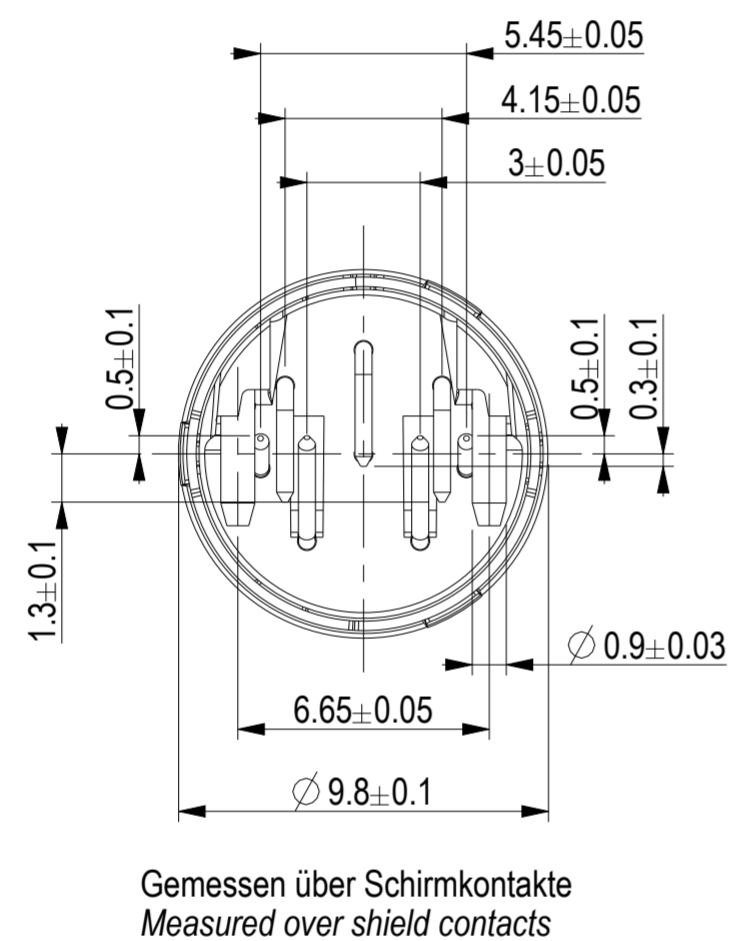
Information		Tolerances		Scale 1:4		Designation		alle Varianten / all versions	
All rights reserved. Only for information. To ensure that this is the latest version of this drawing, please contact one of the ERNI companies before using.		Subject to modification without prior notice. Drawing will not be updated.		All Dimensions in mm		M12 90° F A THR Rückmontage M12 90° F A THR rear mount		225302	
A	30.09.14	ERNI www.ERNI.com		Class		M12		I (1 / 3) A2	

Handschriftliche Änderungen auf CAD Zeichnungen sind nicht zulässig

Copyright by ERNI GmbH
Proprietary notice pursuant to ISO 18016 to be observed.

Ident-Nr. Ident-No.	O-ring O-ring	Schirm Shield	P&P Fläche P&P area	Verdrehschutz Anti twist	Verguss Potting
225300	no	no	1	no	needed
225301	no	yes	1	no	recommended
225455	yes	no	2	no	needed
225615	yes	no	1	yes	not needed
225616	yes	no	2	yes	not needed

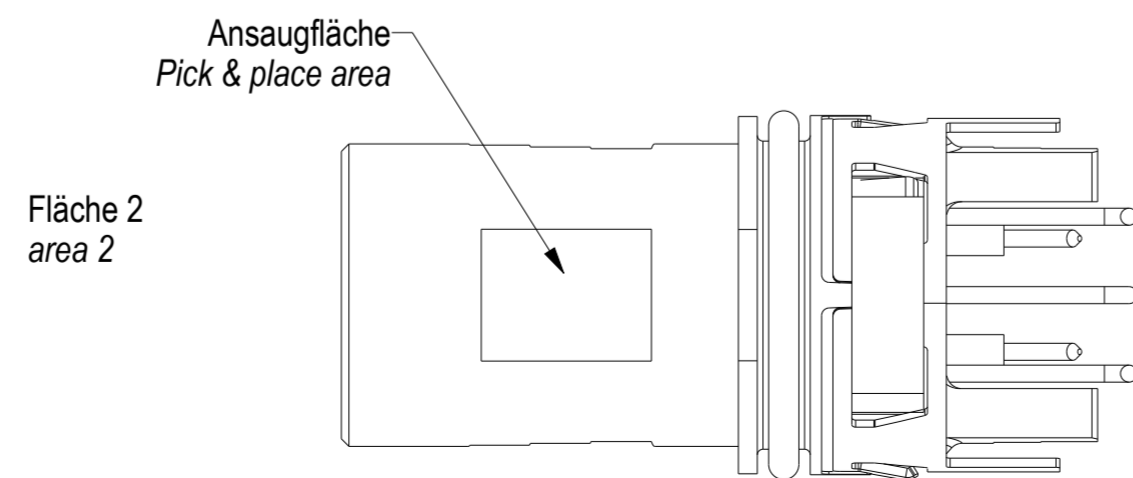
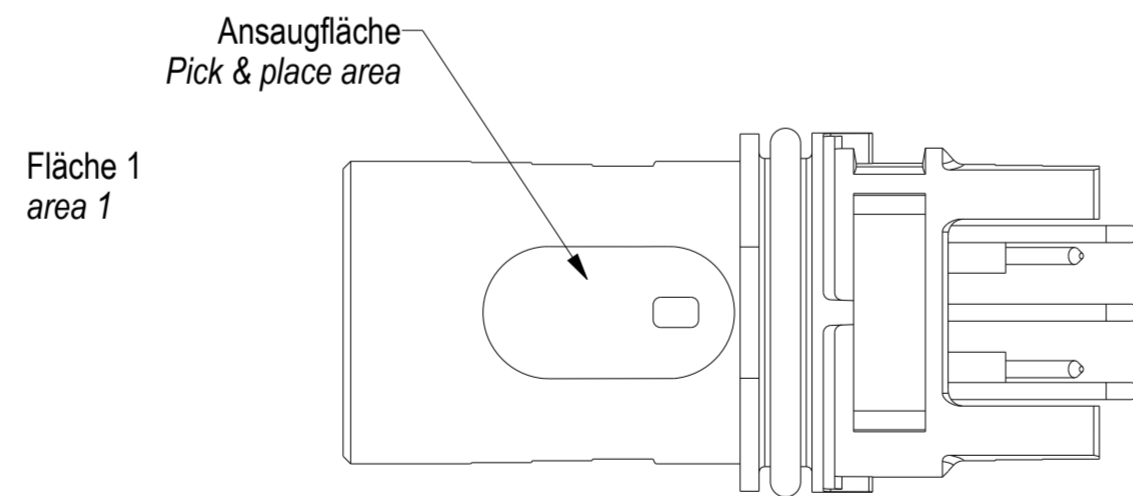
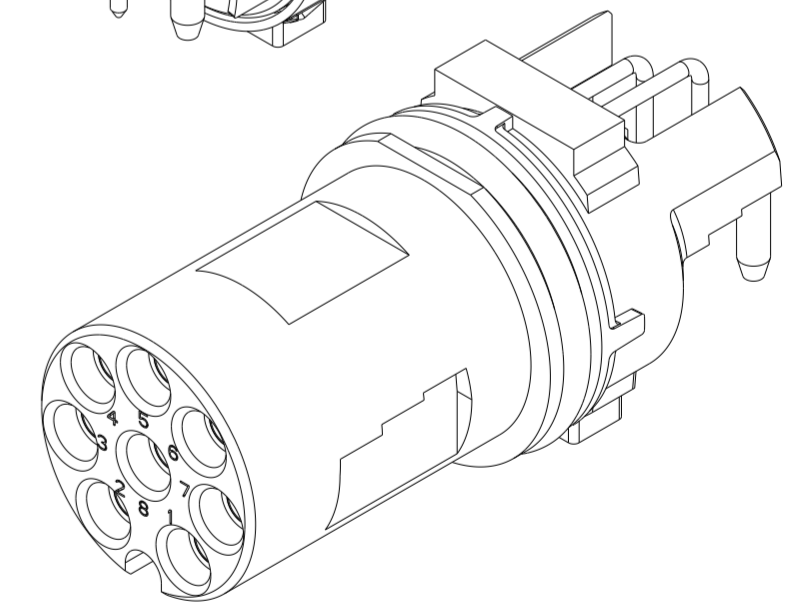
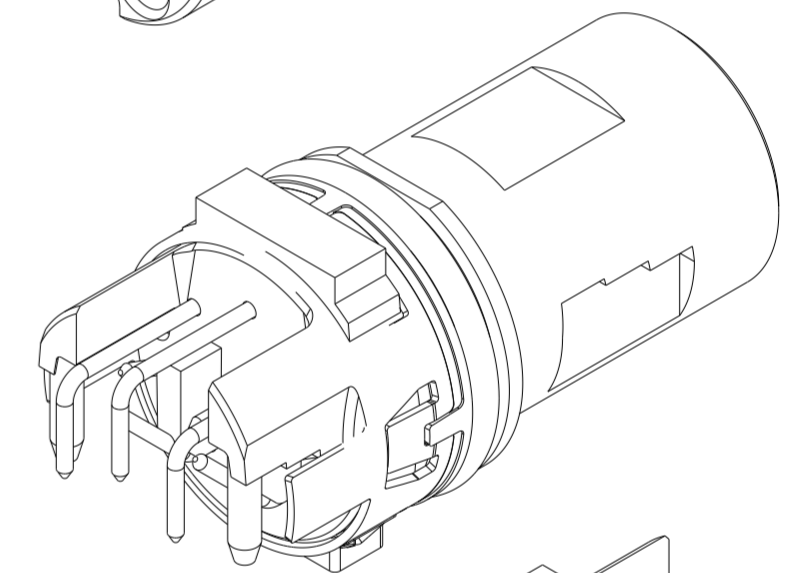
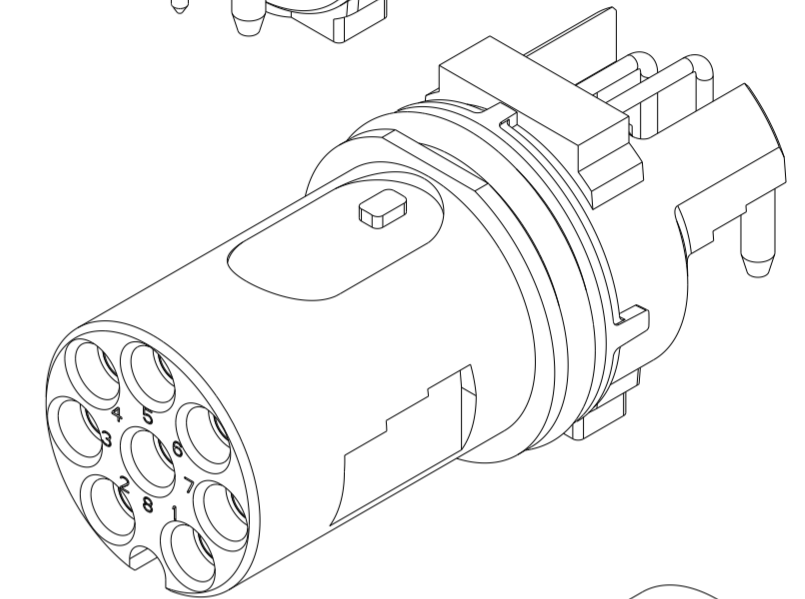
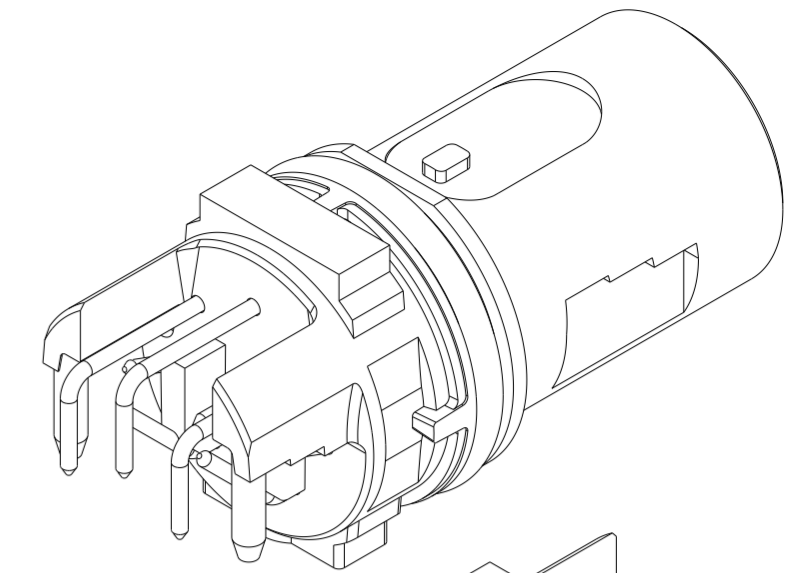
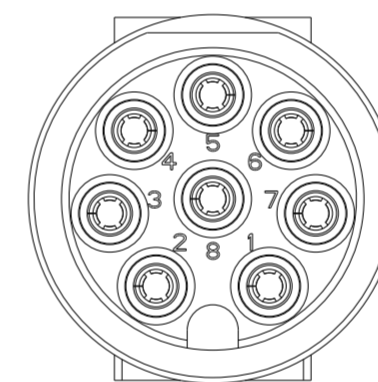
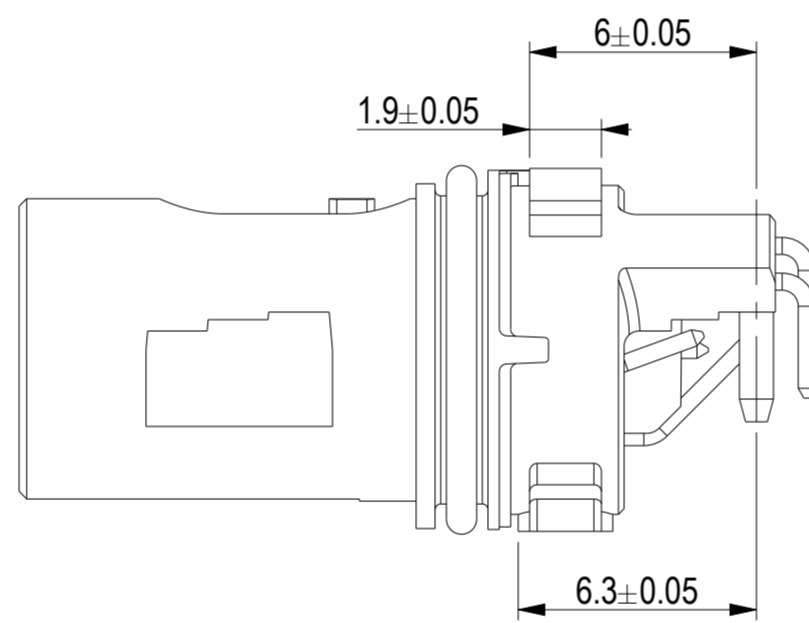
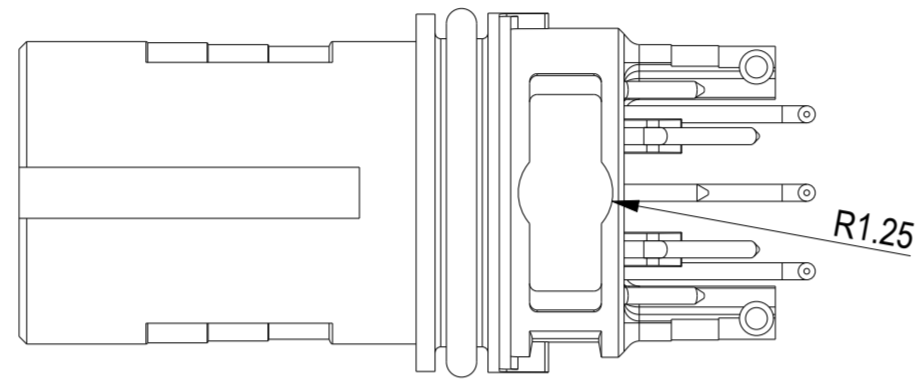
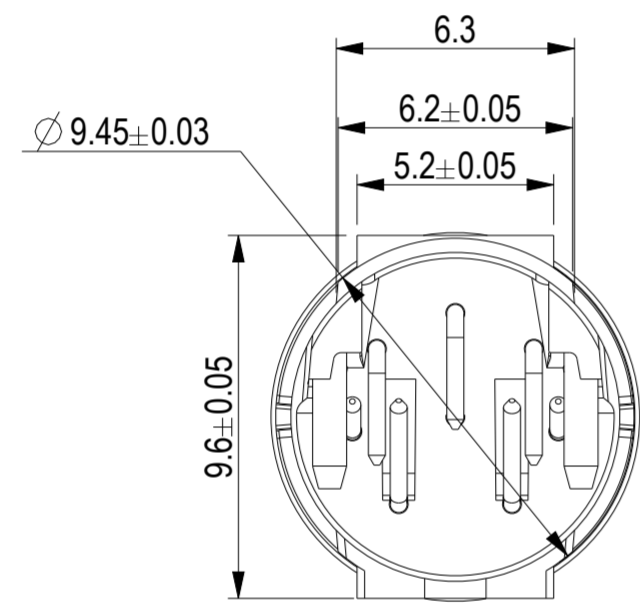
Darstellung mit Schirm und O-Ring
Drawn with shield and O-ring



Steckgesicht nach IEC 61076-2-101
Mating face acc. IEC 61076-2-101

Information		Tolerances	Scale	5:1
All rights reserved. Only for information. To ensure that this is the latest version of this drawing, please contact one of the ERNI companies before using.		Subject to modification without prior notice. Drawing will not be updated.	Designation	
ERNI www.ERNI.com		8 polige Version / 8 pin version		
A		30.09.14		1
Index		Date		(2 / 3)
Class		M12		A2

Ident-Nr. Ident-No.	O-ring O-ring	Schirm Shield	P&P Fläche P&P area	Verdrehschutz Anti twist	Verguss Potting
225615	yes	no	1	yes	not needed
225616	yes	no	2	yes	not needed



SCALE 5:1

Steckgesicht nach IEC 61076-2-101
Mating face acc. IEC 61076-2-101

Für alle anderen Informationen und Abmessungen siehe Blatt 2
For all other information and dimensions see sheet 2

<small>Copyright by ERNI GmbH Proprietary notice pursuant to ISO 16016 to be observed.</small>	Information	Tolerances	Scale 5:1	
	<small>All rights reserved. Only for information. To ensure that this is the latest version of this drawing, please contact one of the ERNI companies before using.</small>	<small>All Dimensions in mm</small>		
	<small>Subject to modification without prior notice. Drawing will not be updated.</small>		<small>Designation</small> 8 polige Version / 8 pin version M12 90° F A THR Rückmontage M12 90° F A THR rear mount	
	www.ERNI.com		225302	1 (3 / 3) A2
A Index	30.09.14 Date		Class M12	