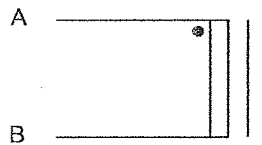
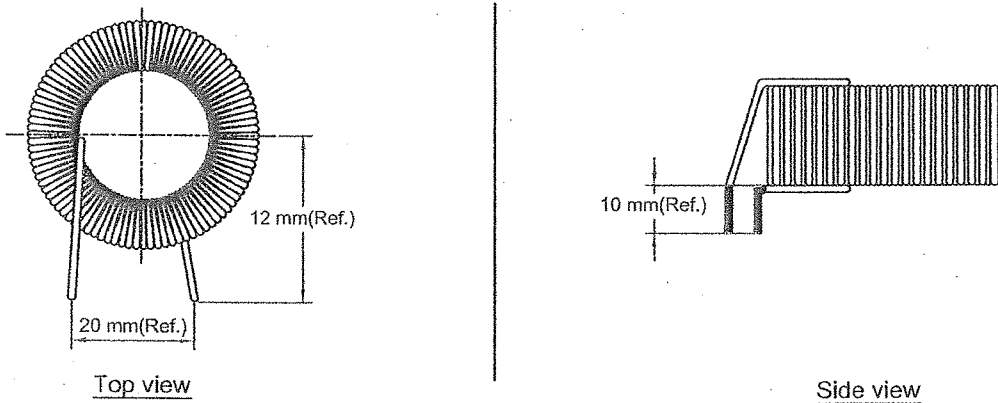


Specification for 12281078-1 Choke 305µH 2.0A DK-12175-C

Schematic :



Mechanical drawing :



Winding specification : A - B : 96 turns Ø0,70 mm.

Routine test : L (A-B) : 457 < L < 606 µH at 10KHz / 100 mV.

Material specification :
 Core : Toroid Core PT-900-60 (22,9x14x9,5), TSC PyroFerric
 Cu-wire : Polyesterimide with Polyamideimide overcoat 200°C, grade 2 acc. to IEC 60317
 Rondel: Plast Ø20mm, Black
 Washer: Rubber Ø25mm, White

Marking : None

No.:	Revision:	Date/Init.:	 FLUX INTERNATIONAL LTD., BLK C5 41/27 Bangna-Trad KM.16.5 Bangchalong. Bangplee, Samutprakarn 10540, Thailand. Tel: +662-337-0201 Fax: +662-337-0187 www.flux-int.com	Scale:	Size:	Projection:
1	00/Initial	28-Mar-11/DS				
2	01/Update	29-Mar-11/DS				
3	02/Update	26-Sep-11/DS				
Constructor : Dumrongrit S. Approved : Suphachai S.			Title: Specification for 12281078-1 Choke 305µH 2.0A DK-12175-C	Tolerances : - Unless otherwise specified Material : - File name : 04910733-1.dwg Documentno.: 04910733-1		