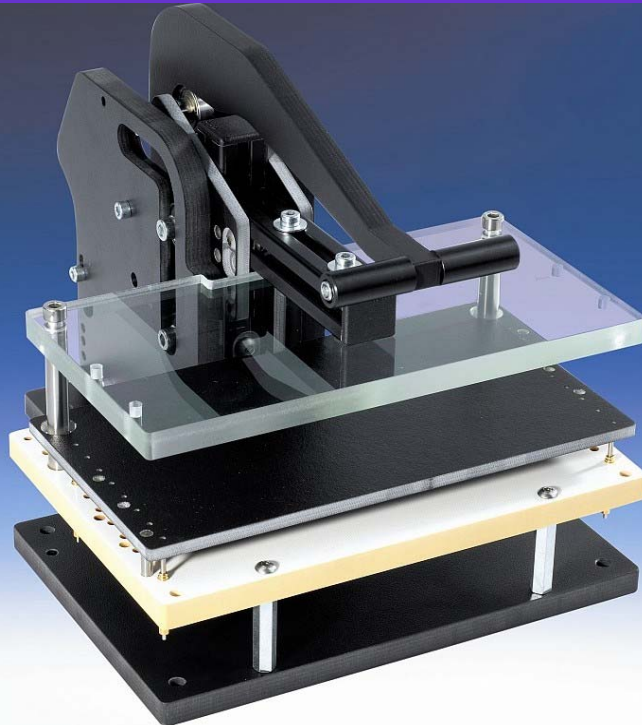


## Changeable Units

## Mechanical Fixture

### WA-M-12xx



### Technical description

- small changeable fixture with parallel mechanical pressure unit
- it can be opened during the debugging (1250/1251)
- interface with 192 contacts (1250/1251)
- lower-cost because of the changeable unit
- individual upgrading through the unit assembly system
- customer specified interface
- fixture is suitable for about 300N (200 probes with 1,5N spring force)
- changeable plates / raise of case are not included in the fixture; order separately
- optional locking device with magnet

Fixture:	Outside dimensions:	Working area:	Probe plate:	Moving plate:	Holddown plate:	Holddown element:
WA-M-1200	250x190x190mm	160x100mm	WA-KTP-100	WA-PAP-100	WA-AP-100	WA-AE-100
WA-M-1250	490x330x220mm	320x100mm	WA-KTP-1250	WA-PAP-1250	WA-AP-1250	WA-AE-1250
WA-M-1251	490x330x220mm	160x100mm	WA-KTP-100	WA-PAP-100	WA-AP-100	WA-AE-100
WA-M-1251-T	490x330x220mm	2x 160x100mm	2x WA-KTP-100	2x WA-PAP-100	2x WA-AP-100	2x WA-AE-100

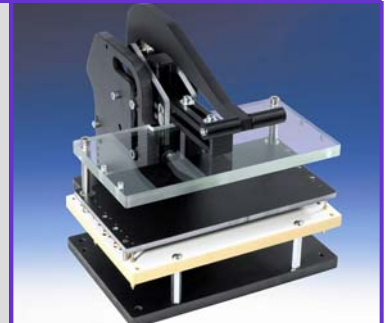
## Changeable Units

## Mechanical Fixture

### Small fixture with parallel closing pressure unit

max. working area: 160x100mm,  
outside dimensions: 250x190x190mm

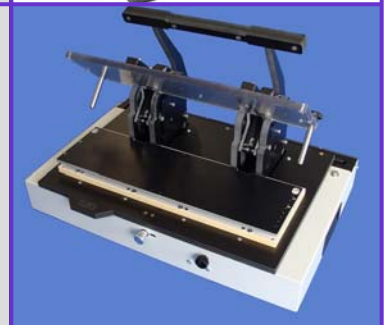
Order number: **WA-M-1200**



### Small fixture with parallel closing pressure unit

max. working area: 320x100mm,  
outside dimensions: 490x330x220mm

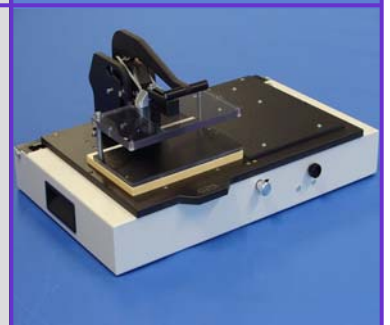
Order number: **WA-M-1250**



### Small fixture with parallel closing pressure unit

max. working area: 160x100mm,  
outside dimensions: 490x330x220mm

Order number: **WA-M-1251**



### Small fixture with parallel closing pressure unit

max. working area: 2x 160x100mm,  
outside dimensions: 490x330x220mm

Order number: **WA-M-1251-T**



### Probe plate

interface for 2 Sub-D-connectors (9 to 25pole)  
(not included)  
max. working area: 160x100mm,  
outside dimensions: 190x130mm, approx. 10mm thick

Order number: **WA-KTP-100**



## Changeable Units

## Mechanical Fixture

### Probe plate

interface for 2 Sub-D-connectors (9 to 25pole)  
(not included)  
max. working area: 320x100mm,  
outside dimensions: 380x130mm, approx. 10mm thick

Order number: **WA-KTP-1250**



### Moving plate

made of EGS-AS; spring-probes for UUT, with 8 distance stoppers (3mm)  
max. working area: 160x100mm;  
outside dimensions: 190x110mm, approx. 5mm thick

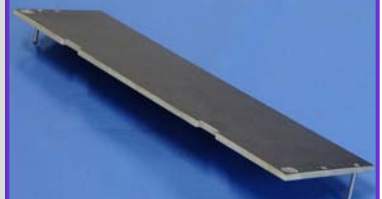
Order number: **WA-PAP-100**



### Moving plate

made of EGS-AS; spring-probes for UUT, with 8 distance stoppers (3mm)  
max. working area: 320x100mm;  
outside dimensions: 380x110mm, approx. 5mm thick

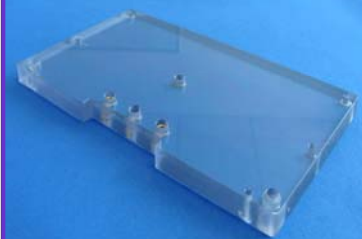
Order number: **WA-PAP-1250**



### Holddown plate

made of ESD acrylic plastic, approx. 10mm thick; inkl. screws,  
max. working area : 160x100mm,  
outside dimensions: 190x110mm

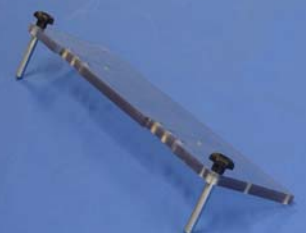
Order number: **WA-AP-100**



### Holddown plate

made of ESD acrylic plastic, approx. 10mm thick; inkl. screws,  
max. working area : 320x100mm,  
outside dimensions: 380x110mm

Order number: **WA-AP-1250**



## Changeable Units

## Mechanical Fixture

### Holddown element

crosshead with 4 heigh-adjustable pushdown fingers, mounting material incl.

Order number: **WA-AE-100**



### Holddown element

crosshead with 4 heigh-adjustable pushdown fingers, mounting material incl.

Order number: **WA-AE-1250**



### Tooling Pins (Set)

2 Pins for holddown plate and moving plate; (use only for probing on the top side)

Order number: **WA-FB-70**



### Spring probes for UUT 3N

sockets incl., spring force 3N; extended height: 13,3mm point style: 4mm

Order number: **WA-GPA-13-3N**



### Spring probes for UUT 6N

sockets incl., spring force 6N; extended height 13,3mm poing style: 4mm

Order number: **WA-GPA-13-6N**



## Changeable Units

## Mechanical Fixture

### Spring probes for UUT 3N

sockets incl., spring force 3N; extended height 13,3mm  
point style: 3mm (plastic)

Order number: **WA-GPA-13-3N-K**



### Spring probes for UUT 6N

sockets incl., spring force 6N; extended height 13,3mm  
point style: 3mm (plastic)

Order number: **WA-GPA-13-6N-K**



### Locking device

with holding magnet (24 V DC)

Order number: **WA-M-1200-VM**

