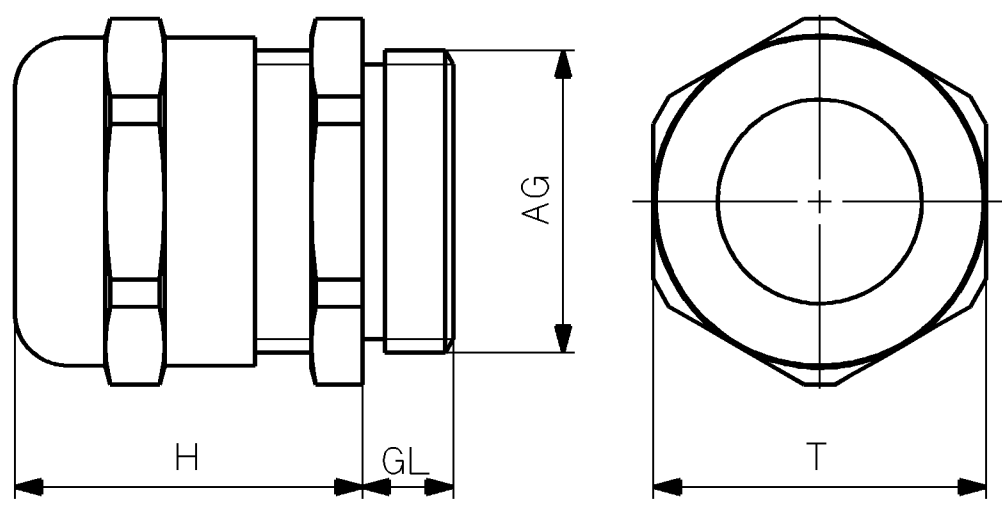


Part No.	AG-Cable gland	Cable dia. (mm)	GL (mm)	H (mm)	T (mm)
0979763-3	M12 × 1.5	∅3-6	5	19	14
0979764-5	M16 × 1.5	∅5-9	5	22	17
0979765-7	M20 × 1.5	∅9-13	6	23	22
0979766-9	M25 × 1.5	∅11-16	7	24	27
0979767-0	M32 × 1.5	∅14-21	8	31	34
0979768-2	M40 × 1.5	∅19-27	8	37	43
0979858-1	M50 × 1.5	∅24-35	9	46	55
0979859-3	M63 × 1.5	∅32-42	10	58	65

- 126 Make or similar.
- 084 Supplier: 1512
- 455 Type: EMC Metric, IP68
- 300 Material: Nickel plated brass



Basic Standards (MBD SB) & Suppl. Drawing No.:		EN21C Surf. roughness	Projection:	Material / Blank:		
0788941 - 1		EN21F-m Tolerances				
			Mass (kg):	Final User Material:		
Date	Des.	Chk.	Appd.	A.C.	Change / Replacement	C.No
				-	Replaced by Ident. No.:	9
				-		8
				-		7
				-		6
				-		5
				-		4
20051013	JYA	JYA	SVK	Z3	Supplier no. corrected	3
20020823	JYA	JYA	JHV	Z3	Transferred to UG	2
20020729	IBB	JHV	JHV	Z4	M50 & M63 added & tbl values corr.	1
20010713	PMA	JHV	JHV	-		0
Similar Drawing No.:			Replacement for Ident. No.:			
Scale:	Size:	Type:	Page No.:	MAN B&W Diesel A/S		
	A3	Metric, EMC	01 (01)			
Info. No.:	Description:			Ident. No.:		
795130	CABLE GLAND, COMPLETE			0789354 - 5		
Final User Info. No.:	Final User Description:			Final User Ident. No.:		

Copyright ©, 1997 MAN B&W Diesel A/S  
 This drawing is the property of MAN B&W Diesel A/S and is to be treated as confidential by the party to whom it has been submitted by MAN B&W Diesel A/S, and is not to be disclosed to third party without the specific prior written permission of MAN B&W Diesel A/S



CAD Drawing - do not correct by hand - UG Drawing