

Two or Four Hole Panel Mounting, IP40

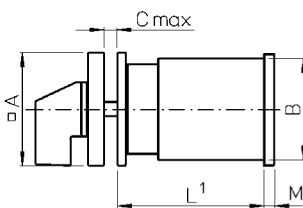
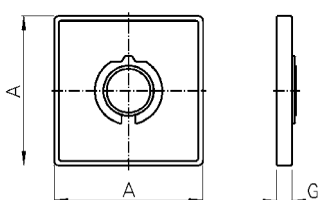
E, E-V, ER



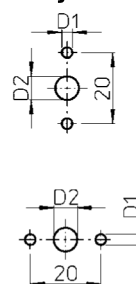
Mounting E is a four hole panel mounting with protection IP40 with the exception of switches CG4 and CA4 where it is a two hole mounting.

By changing the mounting name to E-V the terminals can be rotated 90° clockwise for several switch types.

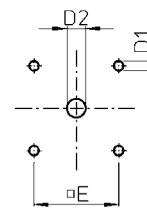
Mounting ER is a four hole panel mounting with protection IP40. Switch with mounting ER is supplied with an additional mounting plate at the rear.



For
CG4...
CA4 ...
only



For
other
switches



Logic usage

	CAD11 CAD12	DH11 DH12	DH11B DH12B	CG4-1 CGD4-1	CA4 CA4-1
A	48	48	64	30	30
B	43	42	56	28	29,5
C	4	4	4	4	4
D1	5	5	5	3,2	3,2
D2	8-15	8-15	10-15	8-11	8-11
E	36	36(48)	48	-	-
G	6,3	6,3	6,3	5,5	5,5
M ²	4,5	5,5	5,5	-	-

Miniature

	CG4	CA4	CL4	CG6
A	30	30	30	30
B	28	29,5	38x46	38
C	4	4	4	4
D1	3,2	3,2	3,2	3,2
D2	8-11	8-11	8-11	8-11
E	-	-	-	-
G	5,5	5,5	5,5	5,5

Control switches

	CA10	CG8	CH10	CL10	CA20	CA25 ³	CA10B CH10B CA20B	CA25B	CA40 ³ CA50 ³ CA63 ³	C80	C125	C315
A	48	48	48	48	48	48 (64)	64	64	64 (88)	88	88	130
B	43	38	46	50x56	45	46	56	56	55,5x64	84	88	126
C	4	4	4	4	4	4	4	4	4	5,5	5,5	7
D1	5	5	5	5	5	5	5	5	5 (6)	6	6	7
D2	8-15	8-15	8-15	8-15	8-15	8-15	10-15	10-15	10-15	13-17	13-17	15,5-20
E	36	36	36	36	36	36 (48)	48	48	48 (68)	68	68	104
G	6,3	6,3	6,3	6,3	6,3	6,3	7,4	7,4	7,4	8,5	8,5	11,5
M ²	4,5				4,5	5,5	5	5,5	7,6	9,4	9,4	11,9

¹Length L is on page 41.

²M, additional length for mounting ER only

³Dimensions in () for ER mounting plate only