

---

## Features

### Hardware

- Supports Programming of all AT17C/LV Series Devices
- Connection to Allow In-System Programming (ISP)
- Runs off Portable 9V DC Power Supply
- 5.0V or 3.0V Supply

### Software

- CPS – Configurator Programming System
- GUI-based Interface
- Supports Windows® 95/98 and Windows NT®
- Online Help
- Supports Programming Reset Polarity
- Verification Routines to Validate Programming
- Accepts HEX, MCS, POF, RBF and BST File Formats

### System Contents

- ATDH2200 Programming Board
- ATDH2222 20-pin PLCC Adapter
- CPS Software
- ATDH2200E Datasheet
- ATDH2200E Programming Kit User Guide
- Standard (PC Printer Port) Parallel Cable
- 10-pin Ribbon Cable for ISP
- 9V DC, 200 mA, 2.1 mm Center Positive Power Supply
- Sample AT17C/LV Devices

## Description

The ATDH2200E allows designers to quickly and economically program Atmel's family of AT17 Configuration Memories. The system also provides support for new devices in the AT17 family prior to Third Party Programmer support being available. A truly portable solution that allows engineers to work from their lab bench or office.



---

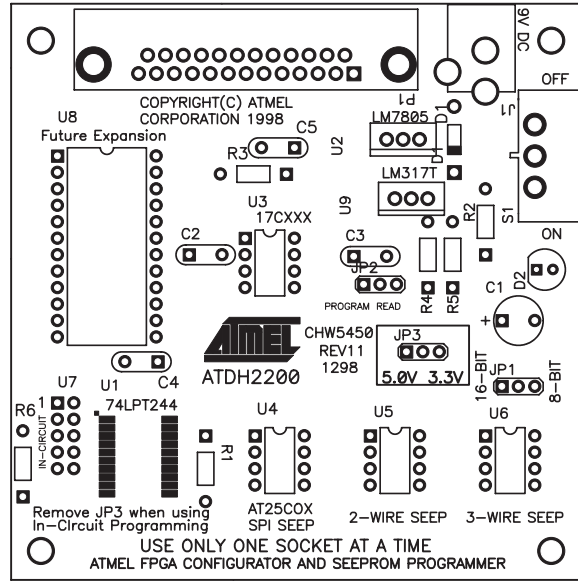
## FPGA Configurator Programming Kit (Enhanced)

---

### ATDH2200E

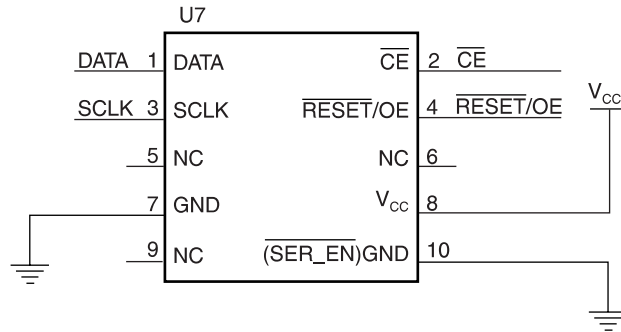


**Figure 1.** ATDH2200E Configurator Programming Board



## In-System Programming Connector

**Figure 2.** In-System Programming Header



Note: Pin 10 activates  $\overline{\text{SER\_EN}}$  on target board.

The ATDH2200E programming board has a 10 pin header (0.1" spacing) to facilitate in-system programming (Figure 2) of the AT17 parts. The control signals generated by the software are fed to the header, as well as to socket U3 on the board. By placing a similar socket on the target system and connecting the programming board to that target system, the programming algorithms written by Atmel can be used to program an AT17 device in-system.

### Related Documents

- ATDH2200E Programming Kit User Guide
- AT17C/LV device datasheets
- Programming Specification for Atmel's FPGA Configuration EEPROMs
- In-System Programming Cascaded Configurators
- AT17A Series Configurators with Altera FPGAs

### Adapters Available for the ATDH2200E

- ATDH2222 – 20-pin PLCC adapter (supplied with kit)
- ATDH2221 – 20-pin SOIC adapter
- ATDH2223 – 8-pin SOIC adapter

**Technical Support**

- Use the ATDH2200E Programming Kit User Guide
- Review the Configurator FAQ at [www.atmel.com](http://www.atmel.com)
- Contact your local Atmel representative or distributor who provided the ATDH2200E for technical support
- Contact your local Atmel FAE (available at most sales offices)
- Contact the Atmel FPGA technical support hotline:  
(408) 436-4119 (9:00 AM - 6:00 PM PST)
- E-mail Atmel configurator technical support:  
**[configurator@atmel.com](mailto:configurator@atmel.com)**
- Fax your inquires to “**Configurator Tech Support**” at:  
(408) 487-2637



## Atmel Headquarters

### *Corporate Headquarters*

2325 Orchard Parkway  
San Jose, CA 95131  
TEL (408) 441-0311  
FAX (408) 487-2600

### *Europe*

Atmel SarL  
Route des Arsenaux 41  
Casa Postale 80  
CH-1705 Fribourg  
Switzerland  
TEL (41) 26-426-5555  
FAX (41) 26-426-5500

### *Asia*

Atmel Asia, Ltd.  
Room 1219  
Chinachem Golden Plaza  
77 Mody Road Tsimhatsui  
East Kowloon  
Hong Kong  
TEL (852) 2721-9778  
FAX (852) 2722-1369

### *Japan*

Atmel Japan K.K.  
9F, Tonetsu Shinkawa Bldg.  
1-24-8 Shinkawa  
Chuo-ku, Tokyo 104-0033  
Japan  
TEL (81) 3-3523-3551  
FAX (81) 3-3523-7581

## Atmel Operations

### *Atmel Colorado Springs*

1150 E. Cheyenne Mtn. Blvd.  
Colorado Springs, CO 80906  
TEL (719) 576-3300  
FAX (719) 540-1759

### *Atmel Rousset*

Zone Industrielle  
13106 Rousset Cedex  
France  
TEL (33) 4-4253-6000  
FAX (33) 4-4253-6001

### *Atmel Smart Card ICs*

Scottish Enterprise Technology Park  
East Kilbride, Scotland G75 0QR  
TEL (44) 1355-357-000  
FAX (44) 1355-242-743

### *Atmel Grenoble*

Avenue de Rochepleine  
BP 123  
38521 Saint-Egreve Cedex  
France  
TEL (33) 4-7658-3000  
FAX (33) 4-7658-3480

---

### *Atmel Configurator Hotline*

(408) 436-4118

### *Atmel Configurator e-mail*

configurator@atmel.com

### *FAQ*

Available on web site

### *Fax-on-Demand*

North America:  
1-(800) 292-8635  
International:  
1-(408) 441-0732

### *e-mail*

literature@atmel.com

### *Web Site*

<http://www.atmel.com>

### *BBS*

1-(408) 436-4309

### © Atmel Corporation 2001.

Atmel Corporation makes no warranty for the use of its products, other than those expressly contained in the Company's standard warranty which is detailed in Atmel's Terms and Conditions located on the Company's web site. The Company assumes no responsibility for any errors which may appear in this document, reserves the right to change devices or specifications detailed herein at any time without notice, and does not make any commitment to update the information contained herein. No licenses to patents or other intellectual property of Atmel are granted by the Company in connection with the sale of Atmel products, expressly or by implication. Atmel's products are not authorized for use as critical components in life support devices or systems.

Windows and Windows NT are trademarks of Microsoft Corporation.

Terms and product names in this document may be trademarks of others.



Printed on recycled paper.

0642D-03/01/xM