



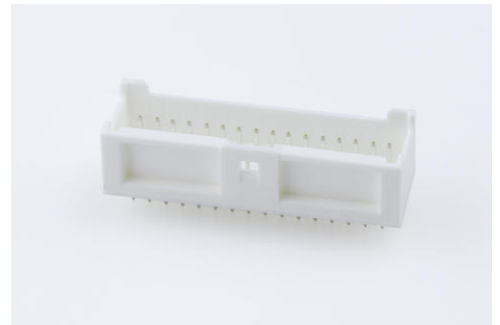
Part Number : [559173210](#)

Product Description : 2.00mm Pitch MicroClasp Wire-to-Board Header, Dual Row, Vertical, 32 Circuits, with PCB Locator

Series Number : 55917

Status : Active

Product Category : PCB Headers and Receptacles



Documents and Resources

Drawings

[559173210 sd.pdf](#)

3D Models and Design Files

[STEP AP242](#)

[SOLIDWORKS](#)

[Creo](#)

[Symbol and Footprint \(Multi-Format\)](#)

Specifications

[561340000-AS-000.pdf](#)

[559179200-SPK-200.pdf](#)

[PS-51353-003-001.pdf](#)

Product Environment Compliance

Compliance

GADSL/IMDS	Not Relevant
China RoHS	 per SJ/T 11365-2006
EU ELV	Not Relevant
Low-Halogen Status	Not Low-Halogen per IEC 61249-2-21
REACH SVHC	Not Contained per D(2025)7771-DC (04 Feb 2026)
EU RoHS	Compliant per EU 2015/863

Compliance Statements

- EU RoHS
- REACH SVHC
- Low-Halogen

Industry Documents

- IPC 1752A Class C
- IPC 1752A Class D
- Molex Product Compliance Declaration
- IEC-62474
- chemSHERPA (xml)

Substances of Interest

- PFAS

EU RoHS Certificate of Compliance

Additional Product Compliance Information

Part Details

General

Status	Active
Category	PCB Headers and Receptacles
Series	55917
Description	2.00mm Pitch MicroClasp Wire-to-Board Header, Dual Row, Vertical, 32 Circuits, with PCB Locator
Application	Signal, Wire-to-Board
Component Type	PCB Header
Product Name	MicroClasp
UPC	756054244326

Agency

UL	E29179
----	--------

Electrical

Current - Maximum per Contact	3.0A
Voltage - Maximum	250V AC (RMS)/DC

Physical

Breakaway	No
-----------	----

Circuits (Loaded)	32
Circuits (maximum)	32
Color - Resin	Natural
Durability (mating cycles max)	30
First Mate / Last Break	No
Flammability	94V-0
Glow-Wire Capable	No
Guide to Mating Part	No
Keying to Mating Part	None
Lock to Mating Part	Yes
Material - Plating Mating	Tin
Material - Plating Termination	Tin
Material - Resin	Polyester
Net Weight	2239.500/mg
Number of Rows	2
Orientation	Vertical
Packaging Type	Tray
PCB Locator	Yes
PCB Retention	Yes
PCB Thickness - Recommended	1.60mm
PC Tail Length	3.20mm
Pitch - Mating Interface	2.00mm
Shrouded	Fully
Stackable	No
Temperature Range - Operating	-40° to +105°C
Termination Interface Style	Through Hole

Mates With / Use With

Mates with Part(s)

Description	Part Number
MicroClasp Dual Row Receptacle Housings	<u>51353</u>