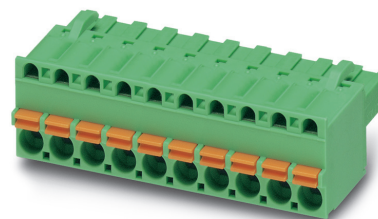


Data sheet

Order No.: 1909294

Type: FKCT 2,5/10-ST

PCB connector, Push-in spring connection



1 Main features



- | | | | |
|---------------------------|---------------------------|------------------------|---------------------|
| • No. of pos. | 10 | • Nominal current | 12 A |
| • Conductor cross section | 2.5 mm ² | • Nominal voltage | 320 V |
| • Color | green (6021) | • Connection direction | 0 ° |
| • Pitch | 5 mm | • Type of packaging | packed in cardboard |
| • Connection method | Push-in spring connection | | |

2 Your advantages

- ✓ Time saving push-in connection, tools not required
- ✓ Intuitive use through colour coded actuation lever
- ✓ Quick and convenient testing using integrated test option
- ✓ Can be combined with the MSTB 2,5 range



Make sure you always use the latest documentation.

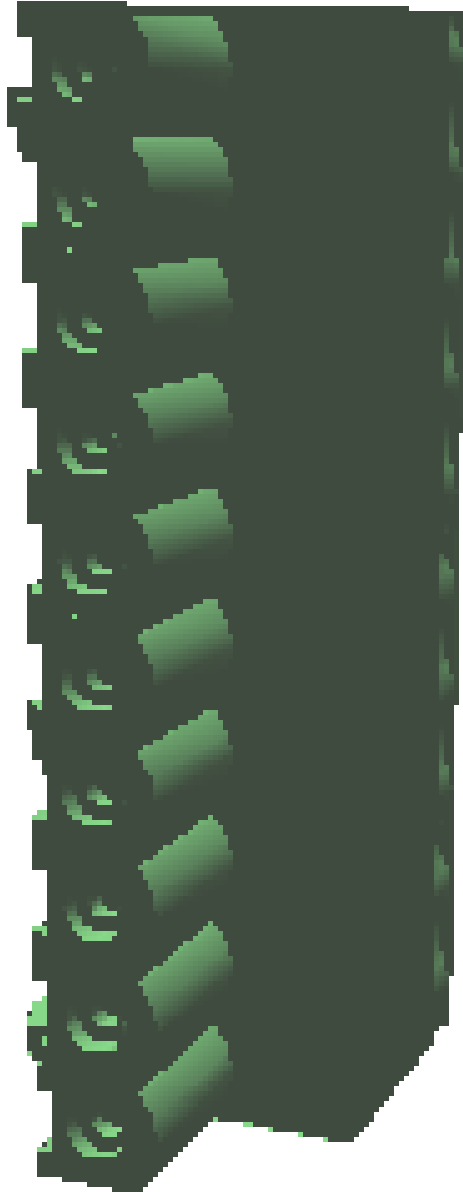
It can be downloaded at: phoenixcontact.net/product/1909294

1909294 FKCT 2,5/10-ST**3 Table of contents**

1	Main features.....	1
2	Your advantages	1
3	Table of contents	2
4	3D model in PDF can be activated (Acrobat Reader only).....	3
5	General Technical Data	4
6	Material properties.....	5
7	Dimensions.....	6
8	Series drawing.....	7
9	Packaging information	8
10	Application.....	8
11	General tests	9
12	Mechanical tests.....	9
13	Insertion and withdrawal forces	11
14	Electrical tests	12
15	Current carrying capacity/derating curves	13
16	Environmental and durability tests	17
17	Type approval and special tests	18
18	Classification for connectors.....	18
19	Approvals / Certificates.....	19
20	Commercial Data.....	20
21	corresponding headers.....	20
22	Accessories	20
23	Combination tests.....	22

1909294 FKCT 2,5/10-ST

4 3D model in PDF can be activated (Acrobat Reader only)



1909294 FKCT 2,5/10-ST**5 General Technical Data****5.1 item properties**

Order No.	1909294
Type	FKCT 2,5/10-ST
Plug-in system	CLASSIC COMBICON
Product type	PCB connector
Type of contact	Female connector
Range of articles	FKCT 2,5/...-ST
Pitch	5 mm
Range of positions	2...20
Number of positions	10
Number of levels	1
Number of connections	10
Number of potentials	10
Connection method	Push-in spring connection
Connection direction of the conductor to the PCB	0 °
Solder pins per potential	1
Type	Standard

5.2 Mounting

Type of locking	without
Fixing	without

5.3 Connection capacity

Nominal cross section	2.5 mm ²
Conductor cross section, solid	0.2 mm ² ... 2.5 mm ²
Conductor cross section, flexible	0.2 mm ² ... 2.5 mm ²
Conductor cross section flexible, with ferrule without plastic sleeve	0.25 mm ² ... 2.5 mm ²
Conductor cross section flexible, with ferrule with plastic sleeve	0.25 mm ² ... 2.5 mm ²
2 conductors with the same cross section flexible with TWIN ferrule and plastic sleeve	0.5 mm ² ... 1.5 mm ²
Stripping length	10 mm

5.4 Connection capacity AWG

Conductor cross section AWG	24 ... 12
-----------------------------	-----------

1909294 FKCT 2,5/10-ST**6 Material properties****6.1 Material of metal parts**

Note	WEEE/RoHS-compliant, whisker-free acc. to IEC 60068-2-82/JEDEC JESD 201
Contact material	Cu alloy
Terminal point surface	Tin (4 - 8 µm Sn)
Surface contact area	Tin (4 - 8 µm Sn)
Surface characteristics	hot-dip tin-plated

6.2 Material of plastic parts

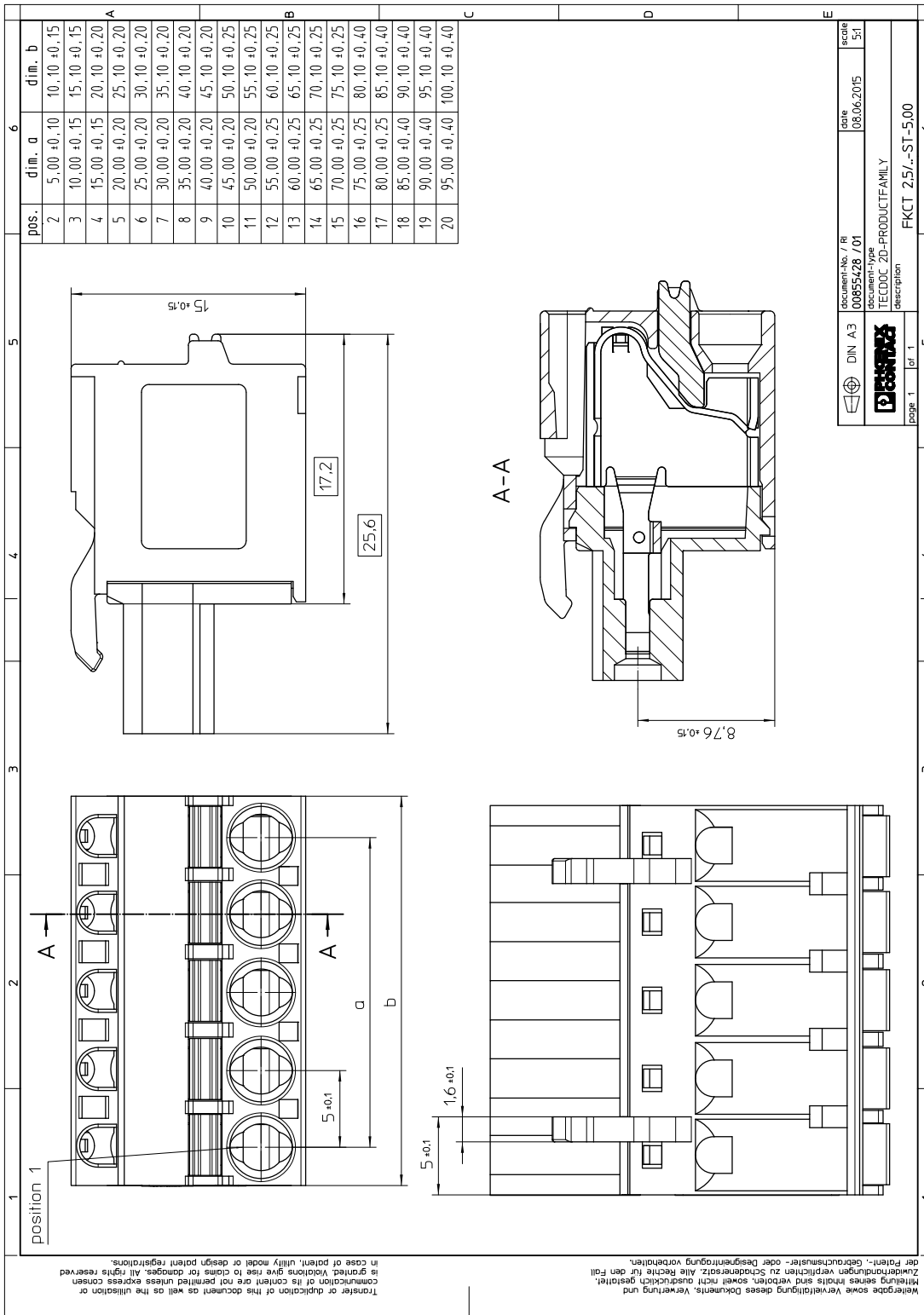
	Housing	Actuation element
Color	green (6021)	
Insulating material	PA	PBT
Insulating material group	I	I
CTI according to IEC 60112	600	600
Flammability rating according to UL 94	V0	V0
Glow wire flammability index GWFI according to EN 60695-2-12	850	
Glow wire ignition temperature GWIT according to EN 60695-2-13	775	
Temperature for the ball pressure test according to EN 60695-10-2	125 °C	

1909294 FKCT 2,5/10-ST**7 Dimensions****7.1 Dimensions for the product**

Length	25.6 mm
Width	50.1 mm
Total height	15 mm
Dimension a	45 mm

1909294 FKCT 2,5/10-ST

8 Series drawing



	DIN A3	document-no. / RI	00655428 / 01	date	08.06.2015	scale	1:5:1
	Phoenix Contact	document-type	TECDOC 2D-PRODUCTFAMILY				
page 1	of 1	description		FKCT 2,5/10-ST-5,00			

1909294 FKCT 2,5/10-ST**9 Packaging information**

Type of packaging	packed in cardboard
Pieces per package	50

10 Application**10.1 Temperature limit values**

Ambient temperature (storage/transport)	-40 °C ... 70 °C
Ambient temperature (assembly)	-5 °C ... 100 °C
Ambient temperature (operation)	-40 °C ... 100 °C (dependent on the derating curve)

1909294 FKCT 2,5/10-ST**11 General tests****11.1 Specification**

Specification	IEC 61984
Specification	IEC 60999-1
Brief description	COMBICON connectors

12 Mechanical tests**12.1 Check for damage to conductor or loosening**

Result	Test passed
Specification	IEC 60999-1:1999-11

12.2 Pull-out test

Specification	IEC 60999-1:1999-11
Result	Test passed
Conductor cross section/conductor type/tractive force actual value	0.14 mm ² / solid / > 10 N
Conductor cross section/conductor type/tractive force actual value	0.14 mm ² / flexible / > 10 N
Conductor cross section/conductor type/tractive force actual value	2.5 mm ² / solid / > 50 N
Conductor cross section/conductor type/tractive force actual value	2.5 mm ² / flexible / > 50 N

12.3 Repeated connection and disconnection

Specification	IEC 60999-1:1999-11
Result	Test passed

12.4 Visual examination

Specification	IEC 61984:2008-10
Visual examination	Test passed
Specification	IEC 60512-1-1:2002-02

12.5 Dimensional test

Dimensional test	Test passed
Specification	IEC 60512-1-2:2002-02

12.6 Resistance of marking

Resistance of marking	Test passed
Specification	IEC 60068-2-70:1995-12

12.7 Polarization and coding

1909294 FKCT 2,5/10-ST

Polarization and coding	Test passed
Specification	IEC 60512-13-5:2006-02
Test force	20 N

12.8 Contact retention in insert

Contact retention in insert	Test passed
Specification	IEC 60512-15-1:2008-05
Test force per pos.	32 N

1909294 FKCT 2,5/10-ST**13 Insertion and withdrawal forces**

Insertion and withdrawal force	
	Test passed
Specification	IEC 60512-13-2:2006-02
No. of cycles	25
Insertion strength per pos. approx.	8 N
Withdraw strength per pos. approx.	6 N

1909294 FKCT 2,5/10-ST**14 Electrical tests****14.1 Electrical data**

Rated current / conductor cross section	12 A / 2.5 mm ²
Rated insulation voltage (III/2)	320 V
Rated surge voltage (III/2)	4 kV
Contact resistance	1.1 mΩ
Degree of pollution	2

14.2 Air and creepage distances

Component	PCB connector		
Specification	IEC 60664-1:2007-04		
Mains type	unearthed mains		
Insulating material group	I		
Comparative tracking index (IEC 60112:2003-01)	CTI 600		
Rated insulation voltage	320 V	320 V	630 V
Rated surge voltage	4 kV	4 kV	4 kV
Degree of pollution	3	2	2
Overvoltage category	III	III	II
Minimum clearance case A (inhomogeneous field)	3 mm	3 mm	3 mm
Minimum value of the creepage path requirement in acc. with table	4 mm	1.6 mm	3.2 mm

14.3 Insulation resistance

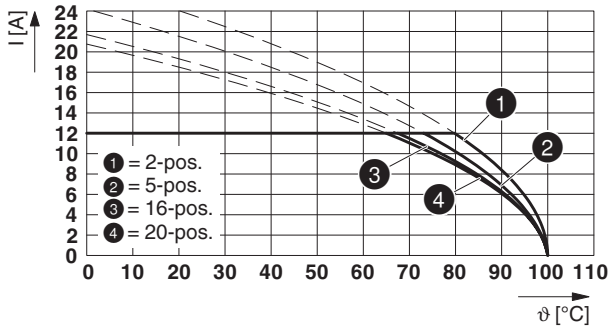
Specification	IEC 60512-3-1:2002-02
Result	Test passed
Insulation resistance, neighboring positions	> 7 GΩ

1909294 FKCT 2,5/10-ST

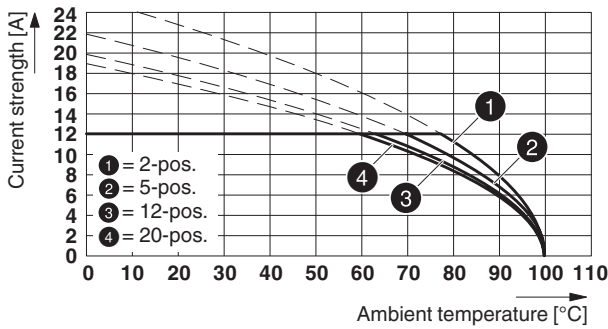
15 Current carrying capacity/derating curves

Specification	IEC 61984:2008-10
Note	Representation based on IEC 60512-5-2:2002-02
Note	For number of positions, see diagram
Reduction factor	0.8
Conductor cross section	2.5 mm ²

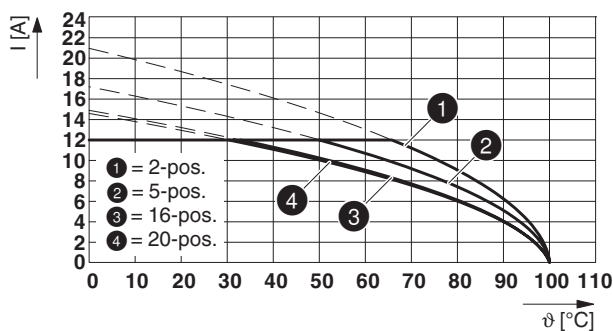
Type: FKCT 2,5/...-ST with MSTB 2,5/...-G



Type: FKCT 2,5/...-ST with MSTBA 2,5/...-G

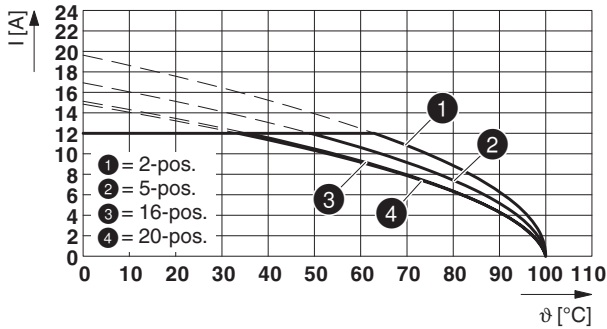


Type: FKCT 2,5/...-ST with MSTBV 2,5/...-G

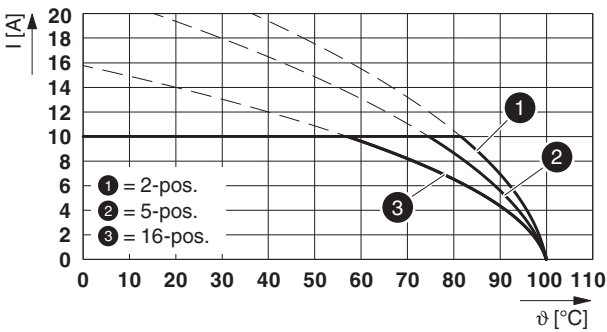


1909294 FKCT 2,5/10-ST

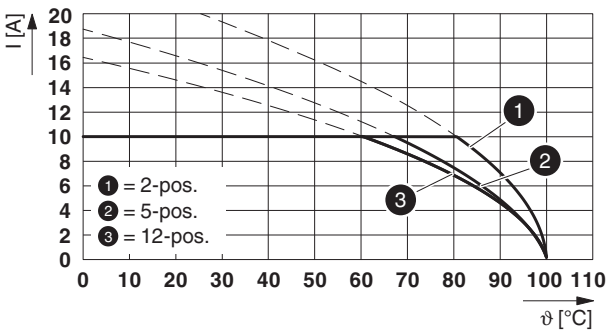
Type: FKCT 2,5/...-ST with MSTBVA 2,5/...-G



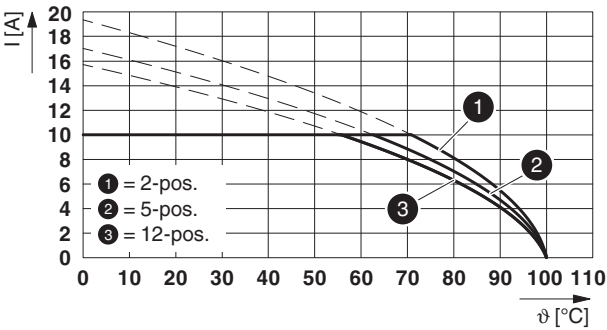
Type: FKCT 2,5/...-ST with MDSTB 2,5/...-G



Type: FKCT 2,5/...-ST with MDSTBA 2,5/...-G

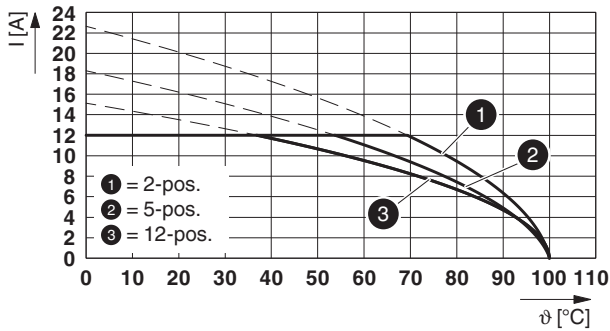


Type: FKCT 2,5/...-ST with MDSTBV 2,5/...-G

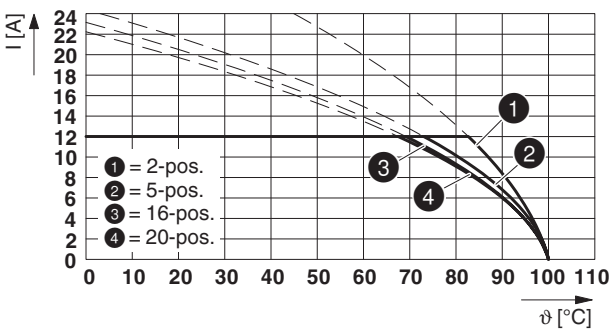


1909294 FKCT 2,5/10-ST

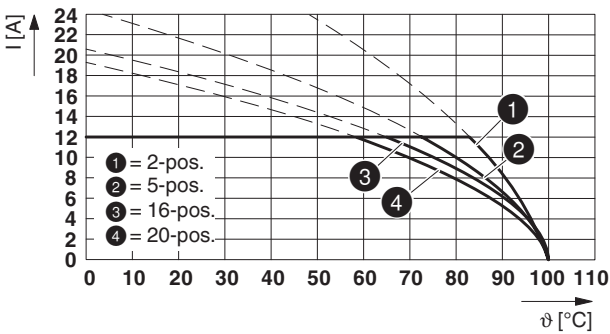
Type: FKCT 2,5/...-ST with MDSTBW 2,5/...-G



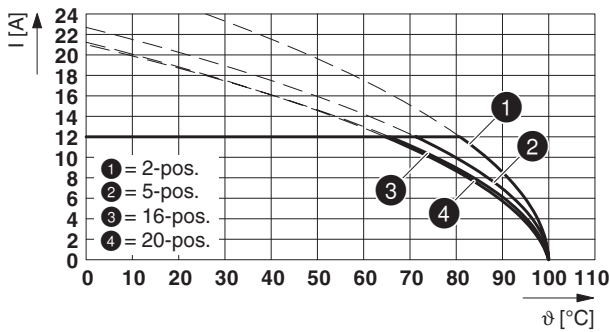
Type: FKCT 2,5/...-ST with SMSTB 2,5/...-G



Type: FKCT 2,5/...-ST with SMSTBA 2,5/...-G

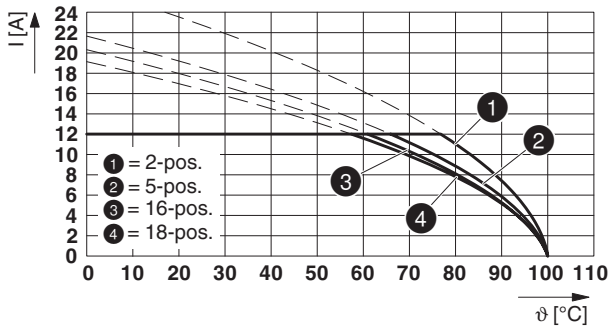


Type: FKCT 2,5/...-ST with MSTBW 2,5/...-G

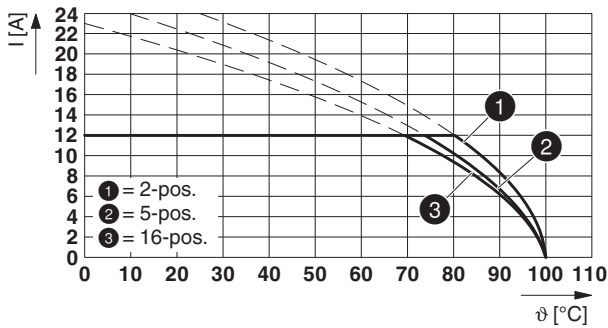


1909294 FKCT 2,5/10-ST

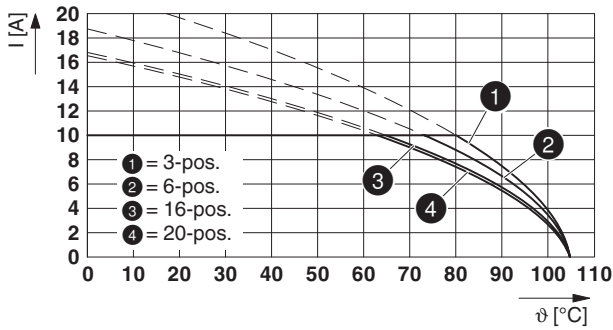
Type: FKCT 2,5/...-ST with FKIC 2,5/...-ST



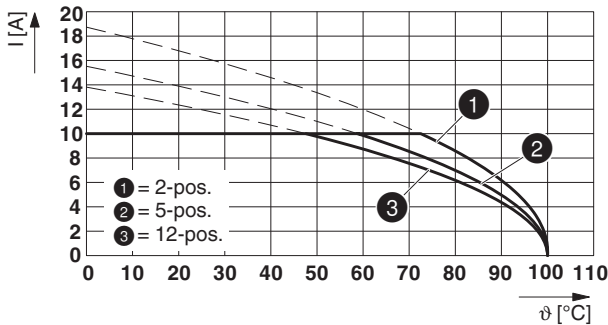
Type: FKCT 2,5/...-ST with FKICS 2,5/...-ST



Type: FKCT 2,5/...-ST with MDSTB 2,5/...-G1



Type: FKCT 2,5/...-ST with MDSTBVA 2,5/...-G



1909294 FKCT 2,5/10-ST**16 Environmental and durability tests****16.1 Vibration test**

Specification	IEC 60068-2-6:2007-12
Result	Test passed
Frequency	10 - 150 - 10 Hz
Sweep speed	1 octave/min
Amplitude	0.35 mm (10 - 60.1 Hz)
Acceleration	5 g (60.1 - 150 Hz)
Test duration per axis	2.5 h
Test directions	X-, Y- and Z-axis
Note	

1909294 FKCT 2,5/10-ST**17 Type approval and special tests****17.1 Insulation resistance**






Specification	IEC 60512-3-1:2002-02
Result	Test passed
Insulation resistance, neighboring positions	> 7 GΩ

18 Classification for connectors

Specification	IEC 61984:2008-10
Main features	Connectors without switching capacity (COC)
Construction form	Fixed connectors
Strain relief elements	without strain relief
Connection method	Can be reconnected
Protection against electric shock	Not encapsulated - touch-proof when inserted
Protective conductor	without PE
Lock	no
Connection method	Screwless terminal points

1909294 FKCT 2,5/10-ST

19 Approvals / Certificates

CSA 	Voltage [V]	Current [A]	Cross section [AWG]	Cross section [mm ²]
Usegroup B				
	300 V	12 A	24 - 12	-
Usegroup D				
	300 V	10 A	24 - 12	-
IECEE CB Scheme 	Voltage [V]	Current [A]	Cross section [AWG]	Cross section [mm ²]
	250 V	12 A	-	0.2 - 2.5
EAC 				
VDE Zeichengenehmigung 	Voltage [V]	Current [A]	Cross section [AWG]	Cross section [mm ²]
	250 V	12 A	-	0.2 - 2.5
cULus Recognized 	Voltage [V]	Current [A]	Cross section [AWG]	Cross section [mm ²]
Usegroup B				
	300 V	10 A	26 - 12	-
Usegroup D				
	300 V	10 A	26 - 12	-

1909294 FKCT 2,5/10-ST**20 Commercial Data**

Order No.	1909294
Type	FKCT 2,5/10-ST
Pieces per package	50
Net weight	16.234 g
GTIN	4017918188153
	Information that applies locally, see link on page 1
Country of origin	Information that applies locally, see link on page 1

21 corresponding headers

Order No.	Type
1736030	MSTBW 2,5/10-G
1753592	MSTBV 2,5/10-G
1754591	MSTB 2,5/10-G
1755503	MSTBVA 2,5/10-G
1757543	MSTBA 2,5/10-G
1762923	MDSTBV 2,5/10-G1
1768260	MSTB 2,5/10-G-LA
1769311	SMSTB 2,5/10-G
1769887	SMSTBA 2,5/10-G
1770562	MSTBA 2,5/10-G-LA
1845866	MDSTBVA 2,5/10-G
1846014	MDSTBV 2,5/10-G
1846593	MDSTBA 2,5/10-G
1846894	MDSTBW 2,5/10-G
1899922	EMSTBA 2,5/10-G
1914933	EMSTBVA 2,5/10-G

22 Accessories

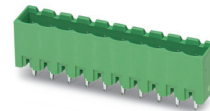
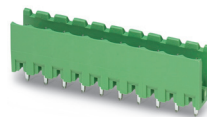
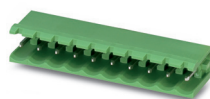
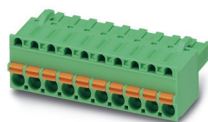
Description	Order No.	Type
Coding profile, is inserted into the slot on the plug or inverted header, red insulating material	1734634	CP-MSTB
Strain relief for snapping into the latching chambers of the plugs, 4-pos.	1876877	STZ 4-FKC-5,08
Strain relief for snapping into the latching chambers of the plug components, 8-pos.	1876880	STZ 8-FKC-5,08
	0201744	MPS-MT
	0201663	MPS-IH WH
	0201676	MPS-IH RD
	0201689	MPS-IH BU
	0201702	MPS-IH GN
	0201647	RPS
Actuation tool, for ST terminal blocks, insulated, also suitable for use as a bladed screwdriver, size: 0.6 x 3.5 x 100 mm, 2-component grip, with non-slip grip	1205053	SZS 0,6X3,5
	0804183	SK 5/3,8:FORTL.ZAHLEN
	1736030	MSTBW 2,5/10-G
	1753592	MSTBV 2,5/10-G
	1754591	MSTB 2,5/10-G

1909294 FKCT 2,5/10-ST

Description	Order No.	Type
	1755503	MSTBVA 2,5/10-G
	1757543	MSTBA 2,5/10-G
	1762923	MDSTBV 2,5/10-G1
	1768260	MSTB 2,5/10-G-LA
	1769311	SMSTB 2,5/10-G
	1769887	SMSTBA 2,5/10-G
	1770562	MSTBA 2,5/10-G-LA
	1845866	MDSTBVA 2,5/10-G
	1846014	MDSTBV 2,5/10-G
	1846593	MDSTBA 2,5/10-G
	1846894	MDSTBW 2,5/10-G
	1899922	EMSTBA 2,5/10-G
	1914933	EMSTBVA 2,5/10-G

1909294 FKCT 2,5/10-ST

23 Combination tests

**FKCT 2,5/10-ST**

IEC 61984

MSTB 2,5/10-G

IEC 61984

MSTBA 2,5/10-G

IEC 61984

MSTBV 2,5/10-G

IEC 61984

MSTBVA 2,5/10-G

IEC 61984

Mechanical tests (A)

Insertion/withdrawal force per position

approx. 8 N / 6 N

approx. 8 N / 6 N

approx. 8 N / 6 N

approx. 8 N / 6 N

Polarization when inserted
Requirement >20 N

Test passed

Test passed

Test passed

Test passed

Contact holder in insert
Requirements >20 N

Test passed

Test passed

Test passed

Test passed

Durability tests (B)Contact resistance R_1 1.1 m Ω 1.1 m Ω 2.6 m Ω 2.2 m Ω

Insertion/withdrawal cycles

25

25

25

25

Contact resistance R_2 1.2 m Ω 1.2 m Ω 2.6 m Ω 2.3 m Ω Rated impulse voltage at sea level
Voltage waveform $\geq (1.2/50 \mu\text{s})$

4.8 kV

4.8 kV

4.8 kV

4.8 kV

Power-frequency withstand voltage
Voltage waveform $\geq (50/60 \text{ Hz})$

2.21 kV

2.21 kV

2.21 kV

2.21 kV

Thermal tests (C)

Tested number of positions

20

20

20

20

Tested conductor cross section

2.5 mm²2.5 mm²2.5 mm²2.5 mm²

Test current

12 A

12 A

12 A

Upper limiting temperature
Requirements < 100°C

Test passed

Test passed

Test passed

Test passed

Climatic tests (D)

Test sequence 1: low temperature storage

-40 °C/2 h

-40 °C/2 h

-40 °C/2 h

-40 °C/2 h

Test sequence 2: heat storage

100 °C/168 h

100 °C/168 h

100 °C/168 h

100 °C/168 h

Test sequence 3: noxious gas storage
(ISO 6988)0.2 dm³ SO₂ on 300 dm³/
40 °C/1 cycle0.2 dm³ SO₂ on 300 dm³/
40 °C/1 cycle0.2 dm³ SO₂ on 300 dm³/
40 °C/1 cycle0.2 dm³ SO₂ on 300 dm³/
40 °C/1 cycleRated impulse voltage at sea level
Voltage waveform $\geq (1.2/50 \mu\text{s})$

4.8 kV

4.8 kV

4.8 kV

4.8 kV

Power-frequency withstand voltage
Voltage waveform $\geq (50/60 \text{ Hz})$

2.21 kV

2.21 kV

2.21 kV

2.21 kV

Environmental and endurance tests (E)

Specification

IEC 61984:2008-10

IEC 61984:2008-10

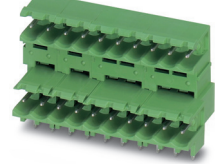
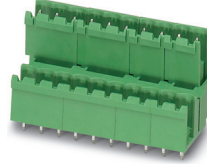
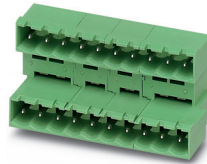
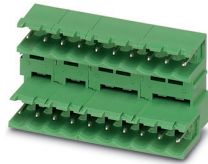
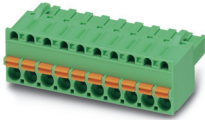
IEC 61984:2008-10

IEC 61984:2008-10

Degree of protection

Finger safety with IP20
test fingerFinger safety with IP20
test fingerFinger safety with IP20
test fingerFinger safety with IP20
test finger

1909294 FKCT 2,5/10-ST

**FKCT 2,5/10-ST****MDSTB 2,5/10-G****MDSTBA 2,5/10-G****MDSTBV 2,5/10-G****MDSTBW 2,5/10-G**

IEC 61984

IEC 61984

IEC 61984

IEC 61984

IEC 61984

Mechanical tests (A)

Insertion/withdrawal force per position

approx. 8 N / 6 N

approx. 8 N / 6 N

approx. 8 N / 6 N

approx. 8 N / 6 N

Polarization when inserted
Requirement >20 N

Test passed

Test passed

Test passed

Test passed

Contact holder in insert
Requirements >20 N

Test passed

Test passed

Test passed

Test passed

Durability tests (B)Contact resistance R_1 1.6 m Ω 1.5 m Ω 2.2 m Ω 1.8 m Ω

Insertion/withdrawal cycles

25

25

25

25

Contact resistance R_2 1.7 m Ω 1.6 m Ω 2.2 m Ω 1.8 m Ω Rated impulse voltage at sea level
Voltage waveform \geq (1.2/50 μ s)

4.8 kV

4.8 kV

4.8 kV

4.8 kV

Power-frequency withstand voltage
Voltage waveform \geq (50/60 Hz)

2.21 kV

2.21 kV

2.21 kV

2.21 kV

Thermal tests (C)

Tested number of positions

16

12

12

12

Tested conductor cross section

2.5 mm²2.5 mm²2.5 mm²2.5 mm²

Test current

10 A

10 A

10 A

12 A

Upper limiting temperature
Requirements < 100°C

Test passed

Test passed

Test passed

Test passed

Climatic tests (D)

Test sequence 1: low temperature storage

-40 °C/2 h

-40 °C/2 h

-40 °C/2 h

-40 °C/2 h

Test sequence 2: heat storage

100 °C/168 h

100 °C/168 h

100 °C/168 h

100 °C/168 h

Test sequence 3: noxious gas storage
(ISO 6988)0.2 dm³ SO₂ on 300 dm³/
40 °C/1 cycle0.2 dm³ SO₂ on 300 dm³/
40 °C/1 cycle0.2 dm³ SO₂ on 300 dm³/
40 °C/1 cycle0.2 dm³ SO₂ on 300 dm³/
40 °C/1 cycleRated impulse voltage at sea level
Voltage waveform \geq (1.2/50 μ s)

4.8 kV

4.8 kV

4.8 kV

4.8 kV

Power-frequency withstand voltage
Voltage waveform \geq (50/60 Hz)

2.21 kV

2.21 kV

2.21 kV

2.21 kV

Environmental and endurance tests (E)

Specification

IEC 61984:2008-10

IEC 61984:2008-10

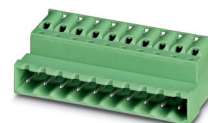
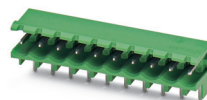
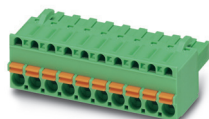
IEC 61984:2008-10

IEC 61984:2008-10

Degree of protection

Finger safety with IP20
test fingerFinger safety with IP20
test fingerFinger safety with IP20
test fingerFinger safety with IP20
test finger

1909294 FKCT 2,5/10-ST

**FKCT 2,5/10-ST**

IEC 61984

Mechanical tests (A)

Insertion/withdrawal force per position

Polarization when inserted
Requirement >20 NContact holder in insert
Requirements >20 N**Durability tests (B)**Contact resistance R_1

Insertion/withdrawal cycles

Contact resistance R_2 Rated impulse voltage at sea level
Voltage waveform $\geq (1.2/50 \mu s)$ Power-frequency withstand voltage
Voltage waveform $\geq (50/60 \text{ Hz})$ **Thermal tests (C)**

Tested number of positions

Tested conductor cross section

Test current

Upper limiting temperature
Requirements < 100°C**Climatic tests (D)**

Test sequence 1: low temperature storage

Test sequence 2: heat storage

Test sequence 3: noxious gas storage
(ISO 6988)Rated impulse voltage at sea level
Voltage waveform $\geq (1.2/50 \mu s)$ Power-frequency withstand voltage
Voltage waveform $\geq (50/60 \text{ Hz})$ **Environmental and endurance tests (E)**

Specification

Degree of protection

SMSTB 2,5/10-G

IEC 61984

approx. 8 N / 6 N

Test passed

Test passed

1.3 m Ω

25

1.4 m Ω

4.8 kV

2.21 kV

20

2.5 mm²

12 A

Test passed

-40 °C/2 h

100 °C/168 h

0.2 dm³ SO₂ on 300 dm³/
40 °C/1 cycle

4.8 kV

2.21 kV

IEC 61984:2008-10

Finger safety with IP20
test finger**SMSTBA 2,5/10-G**

IEC 61984

approx. 8 N / 6 N

Test passed

Test passed

1.1 m Ω

25

1.2 m Ω

4.8 kV

2.21 kV

20

2.5 mm²

12 A

Test passed

-40 °C/2 h

100 °C/168 h

0.2 dm³ SO₂ on 300 dm³/
40 °C/1 cycle

4.8 kV

2.21 kV

IEC 61984:2008-10

Finger safety with IP20
test finger**MSTBW 2,5/10-G**

IEC 61984

approx. 8 N / 6 N

Test passed

Test passed

1.3 m Ω

25

1.3 m Ω

4.8 kV

2.21 kV

20

2.5 mm²

12 A

Test passed

-40 °C/2 h

100 °C/168 h

0.2 dm³ SO₂ on 300 dm³/
40 °C/1 cycle

4.8 kV

2.21 kV

IEC 61984:2008-10

Finger safety with IP20
test finger**FKIC 2,5/10-ST**

IEC 61984

approx. 8 N / 6 N

Test passed

Test passed

1.5 m Ω

25

1.5 m Ω

4.8 kV

2.21 kV

18

2.5 mm²

12 A

Test passed

-40 °C/2 h

100 °C/168 h

0.2 dm³ SO₂ on 300 dm³/
40 °C/1 cycle

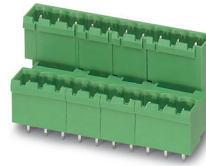
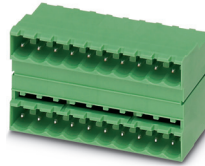
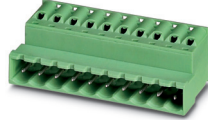
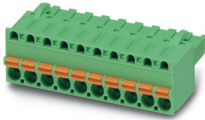
4.8 kV

2.21 kV

IEC 61984:2008-10

Finger safety with IP20
test finger

1909294 FKCT 2,5/10-ST

**FKCT 2,5/10-ST**

IEC 61984

Mechanical tests (A)

Insertion/withdrawal force per position

Polarization when inserted
Requirement >20 NContact holder in insert
Requirements >20 N**Durability tests (B)**Contact resistance R₁

Insertion/withdrawal cycles

Contact resistance R₂Rated impulse voltage at sea level
Voltage waveform ≥ (1.2/50 μs)Power-frequency withstand voltage
Voltage waveform ≥ (50/60 Hz)**Thermal tests (C)**

Tested number of positions

Tested conductor cross section

Test current

Upper limiting temperature
Requirements < 100°C**Climatic tests (D)**

Test sequence 1: low temperature storage

Test sequence 2: heat storage

Test sequence 3: noxious gas storage
(ISO 6988)Rated impulse voltage at sea level
Voltage waveform ≥ (1.2/50 μs)Power-frequency withstand voltage
Voltage waveform ≥ (50/60 Hz)**Environmental and endurance tests (E)**

Specification

Degree of protection

FKICS 2,5/10-ST

IEC 61984

approx. 8 N / 6 N

Test passed

Test passed

1.5 mΩ

25

1.4 mΩ

4.8 kV

2.21 kV

16

2.5 mm²

12 A

Test passed

-40 °C/2 h

100 °C/168 h

0.2 dm³ SO₂ on 300 dm³/
40 °C/1 cycle

4.8 kV

2.21 kV

IEC 61984:2008-10

Finger safety with IP20
test finger**MDSTB 2,5/10-ST-G1**

IEC 61984

approx. 11 N / 9 N

Test passed

Test passed

2.3 mΩ

25

2.3 mΩ

4.8 kV

2.21 kV

20

2.5 mm²

10 A

Test passed

-40 °C/2 h

105 °C/168 h

0.2 dm³ SO₂ on 300 dm³/
40 °C/1 cycle

4.8 kV

2.21 kV

IEC 61984:2008-10

Finger safety with IP20
test finger**MDSTBVA 2,5/10-ST-G**

IEC 61984

approx. 8 N / 6 N

Test passed

Test passed

2.3 mΩ

25

2.3 mΩ

4.8 kV

2.21 kV

12

2.5 mm²

10 A

Test passed

-40 °C/2 h

100 °C/168 h

0.2 dm³ SO₂ on 300 dm³/
40 °C/1 cycle

4.8 kV

2.21 kV

IEC 61984:2008-10

Finger safety with IP20
test finger