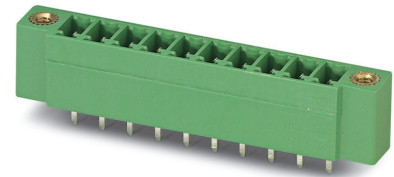


Data sheet

Order No.: 1843279

Type: MCV 1,5/ 7-GF-3,5

PCB header



The figure shows a 10-position version of the product

1 Main features



- | | | | |
|-------------------------|---------------------|------------------------|---------------------|
| • No. of pos. | 7 | • Nominal current | 8 A |
| • Nominal cross section | 1.5 mm ² | • Nominal voltage | 160 V |
| • Color | green (6021) | • Connection direction | 90 ° |
| • Pitch | 3.5 mm | • Type of packaging | packed in cardboard |
| • Mounting type | Wave soldering | | |

2 Your advantages

- ✓ Well-known mounting principle allows worldwide use
- ✓ Screwable flange for superior mechanical stability
- ✓ Vertical connection enables multi-row arrangement on the PCB
- ✓ Maximum flexibility when it comes to device design – one header for connectors with different connection technologies



Make sure you always use the latest documentation.

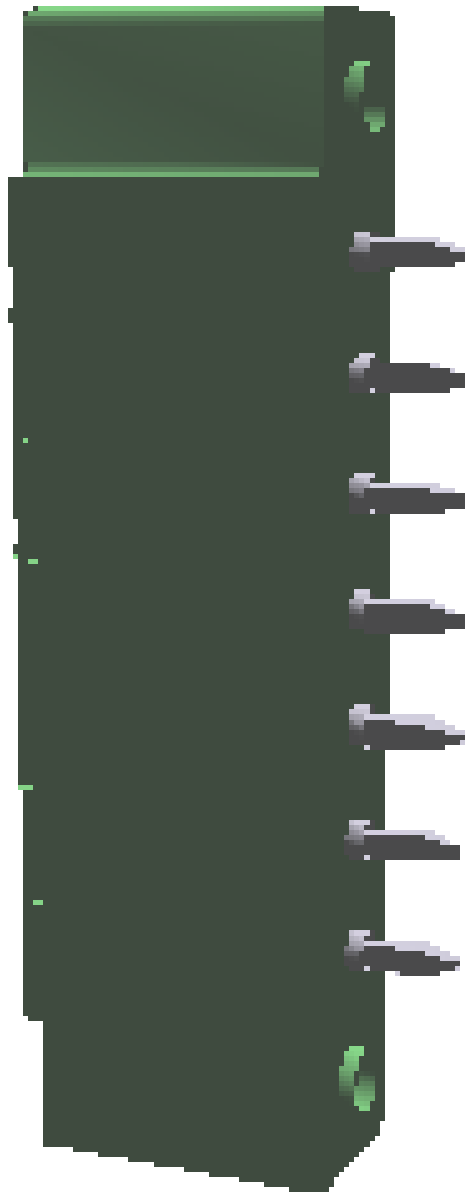
It can be downloaded at: phoenixcontact.net/product/1843279

1843279 MCV 1,5/ 7-GF-3,5**3 Table of contents**

1	Main features.....	1
2	Your advantages	1
3	Table of contents	2
4	3D model in PDF can be activated (Acrobat Reader only).....	3
5	General Technical Data	4
6	Mounting.....	5
7	Material properties.....	5
8	Dimensions.....	6
9	Series drawing.....	7
10	Application.....	8
11	Packaging information	8
12	Mechanical tests.....	9
13	Insertion and withdrawal forces	10
14	Electrical tests	11
15	Current carrying capacity/derating curves	12
16	Approvals / Certificates.....	14
17	Commercial Data.....	15
18	corresponding plugs	15
19	Accessories.....	15
20	Combination tests.....	16

1843279 MCV 1,5/ 7-GF-3,5

4 3D model in PDF can be activated (Acrobat Reader only)



1843279 MCV 1,5/ 7-GF-3,5**5 General Technical Data****5.1 item properties**

Order No.	1843279
Type	MCV 1,5/ 7-GF-3,5
Plug-in system	MINI COMBICON
Product type	PCB header
Type of contact	Male connector
Range of articles	MCV 1,5/..-GF
Pitch	3.5 mm
Number of positions	7
Number of levels	1
Number of connections	7
Number of potentials	7
Mounting type	Wave soldering
Connection direction of the connector to the PCB	90 °
Pin layout	Linear pinning
Solder pins per potential	1
Type	Standard

1843279 MCV 1,5/ 7-GF-3,5**6 Mounting****6.1 Flange mounting**

Type of locking	Screw locking
Mounting flange	Threaded flange
Torque	0.3 Nm

7 Material properties**7.1 Material of metal parts**

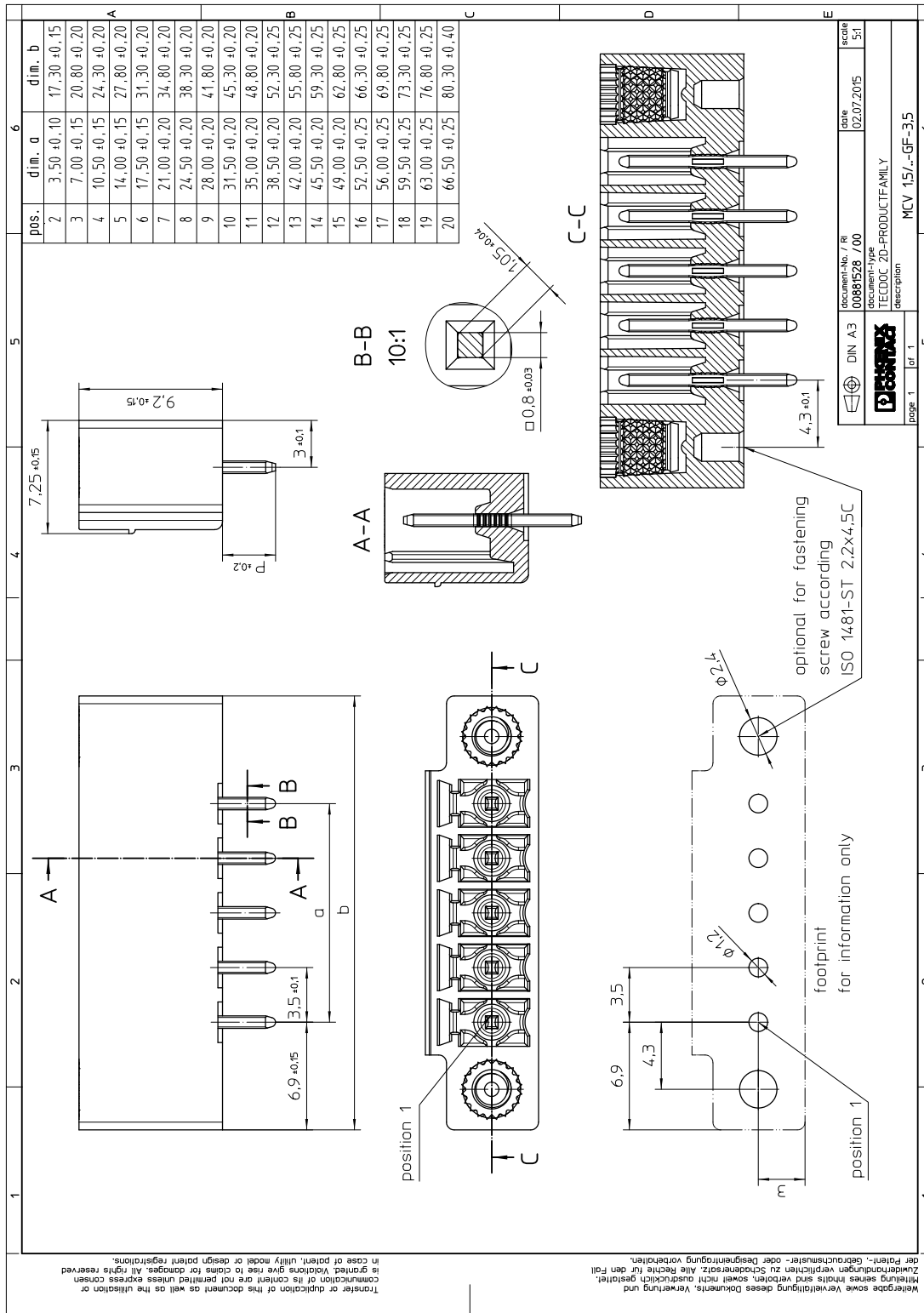
Note	WEEE/RoHS-compliant, whisker-free acc. to IEC 60068-2-82/JEDEC JESD 201
Contact material	Cu alloy
Surface contact area	Nickel (1 - 3 µm Ni) , Tin (3 - 5 µm Sn)
Soldering area surface	Nickel (1 - 3 µm Ni) , Tin (3 - 5 µm Sn)
Surface characteristics	Tin-plated
Insulating material data	Housing
Color	green (6021)
Insulating material	PBT
Insulating material group	IIIa
CTI according to IEC 60112	225
Flammability rating according to UL 94	V0

1843279 MCV 1,5/ 7-GF-3,5**8 Dimensions****8.1 Dimensions for the product**

Length	7.25 mm
Width	34.8 mm
Height (without solder pin)	9.2 mm
Total height	12.6 mm
Solder pin [P]	3.4 mm

1843279 MCV 1,5/ 7-GF-3,5

9 Series drawing



1843279 MCV 1,5/ 7-GF-3,5

10 Application**11 Packaging information**

Type of packaging	packed in cardboard
Pieces per package	100

11.1 Temperature limit values

Ambient temperature (storage/transport)	-40 °C ... 70 °C
Ambient temperature (assembly)	-5 °C ... 100 °C
Ambient temperature (operation)	-40 °C ... 100 °C (dependent on the derating curve)

1843279 MCV 1,5/ 7-GF-3,5**12 Mechanical tests****12.1 Visual examination**

Specification	IEC 61984:2008-10
Visual examination	Test passed
Specification	IEC 60512-1-1:2002-02

12.2 Dimensional test

Dimensional test	Test passed
Specification	IEC 60512-1-2:2002-02

12.3 Resistance of marking

Resistance of marking	Test passed
Specification	IEC 60068-2-70:1995-12

12.4 Polarization and coding

Polarization and coding	Test passed
Specification	IEC 60512-13-5:2006-02
Test force	20 N

12.5 Contact retention in insert

Contact holder in insert Requirements >20 N	Test passed
Specification	IEC 60512-15-1:2008-05

1843279 MCV 1,5/ 7-GF-3,5**13 Insertion and withdrawal forces**

Insertion and withdrawal force	
Specification	Test passed
No. of cycles	25
Insertion strength per pos. approx.	8 N
Withdraw strength per pos. approx.	6 N

1843279 MCV 1,5/ 7-GF-3,5**14 Electrical tests**

Rated current / conductor cross section	8 A / 1.5 mm ²
Rated insulation voltage (III/2)	160 V
Rated surge voltage (III/2)	2.5 kV
Contact resistance	1.7 mΩ
Degree of pollution	2

14.1 Air and creepage distances

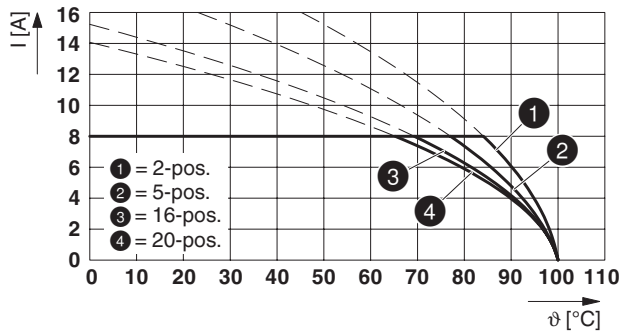
Component	PCB header		
Specification	IEC 60664-1:2007-04		
Mains type	unearthed mains		
Insulating material group	IIIa		
Comparative tracking index (IEC 60112:2003-01)	CTI 225		
Rated insulation voltage	160 V	160 V	250 V
Rated surge voltage	2.5 kV	2.5 kV	2.5 kV
Degree of pollution	3	2	2
Overvoltage category	III	III	II
Minimum clearance case A (inhomogeneous field)	1.5 mm	1.5 mm	1.5 mm
Minimum value of the creepage path requirement in acc. with table	2.5 mm	1.6 mm	2.5 mm

1843279 MCV 1,5/ 7-GF-3,5

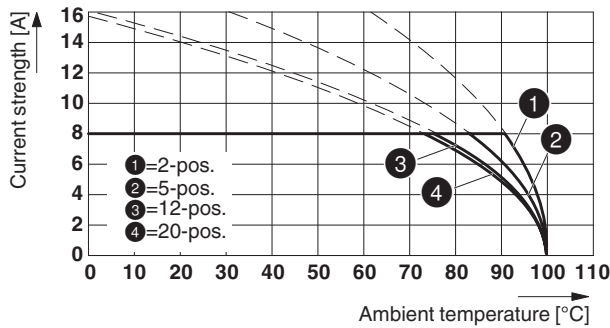
15 Current carrying capacity/derating curves

Specification	IEC 61984:2001-06
Note	Representation based on IEC 60512-5-2:2002-02
Note	For number of positions, see diagram
Reduction factor	0.8
Conductor cross section	1.5 mm ²

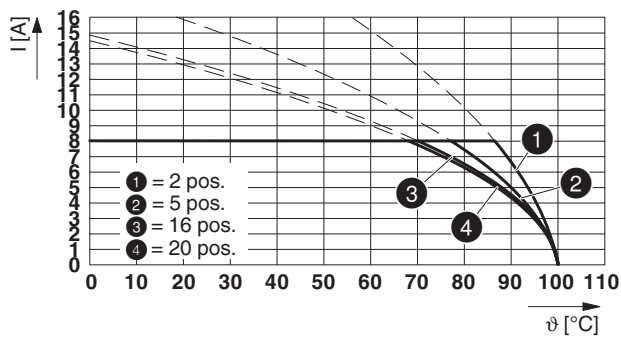
Type: FMC 1,5/...-STF-3,5 with MCV 1,5/...-GF-3,5

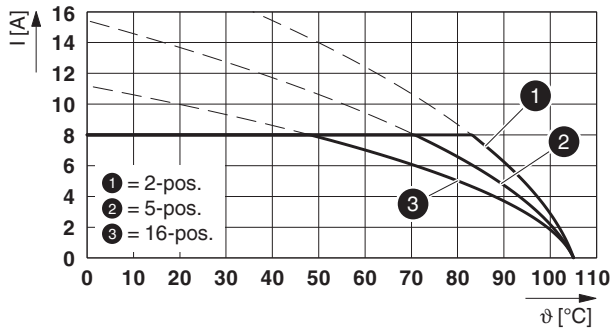
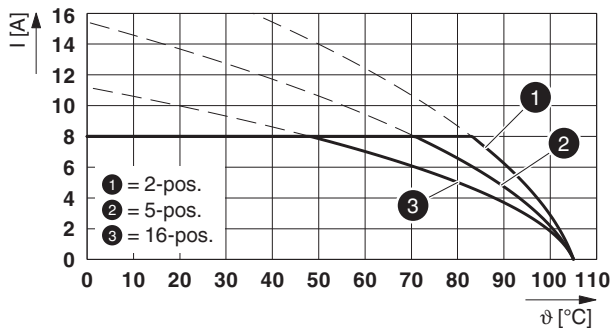


Type: MC 1,5/...-STF-3,5 with MCV 1,5/...-GF-3,5



Type: FK-MCP 1,5/...-STF-3,5 with MCV 1,5/...-GF-3,5



1843279 MCV 1,5/ 7-GF-3,5**Type: MCVR 1,5/...-STF-3,5 with MCV 1,5/...-GF-3,5****Type: MCWV 1,5/...-STF-3,5 with MCV 1,5/...-GF-3,5****15.1 Vibration test**







Specification	IEC 60068-2-6:2007-12
Result	Test passed
Frequency	10 - 150 - 10 Hz
Sweep speed	1 octave/min
Amplitude	0.35 mm (10 - 60.1 Hz)
Acceleration	5 g (60.1 - 150 Hz)
Test duration per axis	2.5 h
Test directions	X-, Y- and Z-axis
Note	

15.2 Insulation resistance

Specification	IEC 60512-3-1:2002-02
Result	Test passed
Insulation resistance, neighboring positions	> 5 MΩ

1843279 MCV 1,5/ 7-GF-3,5

16 Approvals / Certificates

CSA 	Voltage [V]	Current [A]	Cross section [AWG]	Cross section [mm ²]
Usegroup B				
	300 V	8 A	-	-
Usegroup D				
	300 V	8 A	-	-
IECEE CB Scheme 	Voltage [V]	Current [A]	Cross section [AWG]	Cross section [mm ²]
	160 V	8 A	-	-
EAC 				
VDE Gutachten mit Fertigungsüberwachung 	Voltage [V]	Current [A]	Cross section [AWG]	Cross section [mm ²]
	160 V	8 A	-	-
cULus Recognized 	Voltage [V]	Current [A]	Cross section [AWG]	Cross section [mm ²]
Usegroup B				
	300 V	8 A	-	-
Usegroup D				
	300 V	8 A	-	-
VDE Gutachten mit Fertigungsüberwachung 	Voltage [V]	Current [A]	Cross section [AWG]	Cross section [mm ²]
	160 V	8 A	-	-

1843279 MCV 1,5/ 7-GF-3,5**17 Commercial Data**

Order No.	1843279
Type	MCV 1,5/ 7-GF-3,5
Pieces per package	100
Net weight	2.865 g
GTIN	4017918112462
	Information that applies locally, see link on page 1
Country of origin	Information that applies locally, see link on page 1

18 corresponding plugs

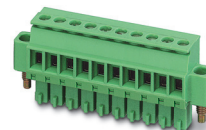
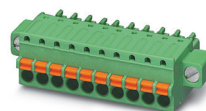
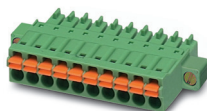
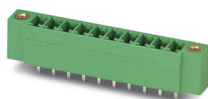
Order No.	Type
1772757	TFMC 1,5/ 7-STF-3,5
1847107	MC 1,5/ 7-STF-3,5
1863055	MCVW 1,5/ 7-STF-3,5
1863356	MCVR 1,5/ 7-STF-3,5
1940143	FK-MCP 1,5/ 7-STF-3,5
1966143	FMC 1,5/ 7-STF-3,5

19 Accessories

Description	Order No.	Type
	0804073	SK 3,5/2,8:FORTL.ZAHLEN
Coding profile, is inserted into the slot on the plug or inverted header, red insulating material	1734634	CP-MSTB

1843279 MCV 1,5/ 7-GF-3,5

20 Combination tests

**MCV 1,5/..-GF**

IEC 61984

Mechanical tests (A)

Insertion/withdrawal force per position

FMC 1,5/..-STF

IEC 61984

approx. 8 N / 6 N

MC 1,5/..-STF

IEC 61984

approx. 6 N / 5 N

FK-MCP 1,5/..-STF

IEC 61984

approx. 8 N / 6 N

MCVR 1,5/..-STF

IEC 61984

approx. 9 N / 4 N

Polarization when inserted
Requirement >20 N

Test passed

Test passed

Test passed

Test passed

Contact holder in insert
Requirements >20 N

Test passed

Test passed

Test passed

Test passed

Durability tests (B)Contact resistance R₁ 1st level

1.7 mΩ

1.8 mΩ

1.5 mΩ

3.3 mΩ

Contact resistance R₁ 2nd level

Insertion/withdrawal cycles

25

25

25

25

Contact resistance R₂

1.6 mΩ

2.2 mΩ

1.6 mΩ

3.4 mΩ

Rated impulse voltage at sea level
Voltage waveform ≥ (1.2/50 μs)

2.95 kV

2.95 kV

2.95 kV

2.95 kV

Power-frequency withstand voltage
Voltage waveform ≥ (50/60 Hz)

1.39 kV

1.39 kV

1.39 kV

1.39 kV

Thermal tests (C)

Tested number of positions

20

20

20

16

Tested conductor cross section

1.5 mm²1.5 mm²1.5 mm²1.5 mm²

Test current

8 A

8 A DC

8 A

8 A

Upper limiting temperature
Requirements < 100°C

Test passed

Test passed

Test passed

Test passed

Climatic tests (D)

Test sequence 1: low temperature storage

-40 °C/2 h

-40 °C/2 h

-40 °C/2 h

-40 °C/2 h

Test sequence 2: heat storage

100 °C/168 h

100 °C/168 h

100 °C/168 h

105 °C/168 h

Test sequence 3: noxious gas storage
(ISO 6988)0.2 dm³ SO₂ on 300 dm³/
40 °C/1 cycle0.2 dm³ SO₂ on 300 dm³/
40 °C/1 cycle0.2 dm³ SO₂ on 300 dm³/
40 °C/1 cycle0.2 dm³ SO₂ on 300 dm³/
40 °C/1 cycleRated impulse voltage at sea level
Voltage waveform ≥ (1.2/50 μs)

2.95 kV

2.95 kV

2.95 kV

2.95 kV

Power-frequency withstand voltage
Voltage waveform ≥ (50/60 Hz)

1.39 kV

1.39 kV

1.39 kV

1.39 kV

Environmental and endurance tests (E)

Specification

IEC 61984:2008-10

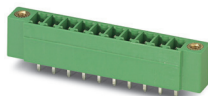
IEC 61984:2008-10

IEC 61984:2008-10

IEC 61984:2008-10

Degree of protection

Finger safety with IP20
test fingerFinger safety with IP20
test fingerFinger safety with IP20
test fingerFinger safety with IP20
test finger

1843279 MCV 1,5/ 7-GF-3,5**MCV 1,5/..-GF**

IEC 61984

Mechanical tests (A)

Insertion/withdrawal force per position

Polarization when inserted
Requirement >20 NContact holder in insert
Requirements >20 N**Durability tests (B)**Contact resistance R₁ 1st levelContact resistance R₁ 2nd level

Insertion/withdrawal cycles

Contact resistance R₂Rated impulse voltage at sea level
Voltage waveform ≥ (1.2/50 μs)Power-frequency withstand voltage
Voltage waveform ≥ (50/60 Hz)**Thermal tests (C)**

Tested number of positions

Tested conductor cross section

Test current

Upper limiting temperature
Requirements < 100°C**Climatic tests (D)**

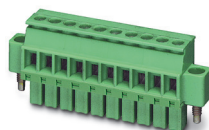
Test sequence 1: low temperature storage

Test sequence 2: heat storage

Test sequence 3: noxious gas storage
(ISO 6988)Rated impulse voltage at sea level
Voltage waveform ≥ (1.2/50 μs)Power-frequency withstand voltage
Voltage waveform ≥ (50/60 Hz)**Environmental and endurance tests (E)**

Specification

Degree of protection

**MCVW 1,5/..-STF**

IEC 61984

approx. 9 N / 4 N

Test passed

Test passed

3.3 mΩ

25

3.4 mΩ

2.95 kV

1.39 kV

16

1.5 mm²

8 A

Test passed

-40 °C/2 h

105 °C/168 h

0.2 dm³ SO₂ on 300 dm³/
40 °C/1 cycle

2.95 kV

1.39 kV

IEC 61984:2008-10

Finger safety with IP20
test finger