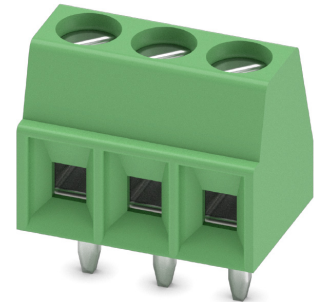


# Data sheet

Item No.: 1751251

Type: MKDS 1/ 3-3,5

PCB terminal block, Screw connection with tension sleeve



## 1 Main features



• No. of pos.	3	• Nominal current	17.5 A
• Conductor cross section	1.5 mm <sup>2</sup>	• Nominal voltage	200 V
• Color	green (RAL 6021)	• Connection direction	0°
• Pitch	3.5 mm	• Type of packaging	packed in cardboard
• Connection method	Screw connection with tension sleeve	• Mounting type	Wave soldering

## 2 Your advantages

- ✓ Well-known connection principle allows worldwide use
- ✓ Low temperature rise, thanks to maximum contact force
- ✓ Allows connection of two conductors
- ✓ Extremely small design for the respective conductor cross section



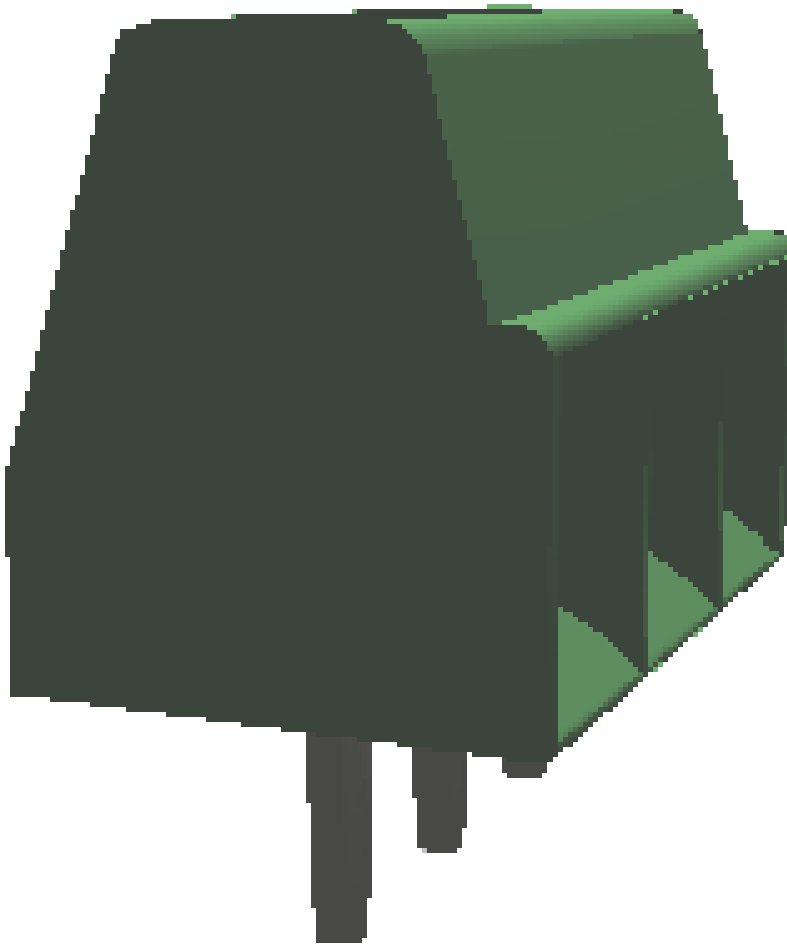
Make sure you always use the latest documentation.

It can be downloaded at: [phoenixcontact.com/product/1751251](https://phoenixcontact.com/product/1751251)

### 3 Table of contents

1	Main features.....	1
2	Your advantages .....	1
3	Table of contents .....	2
4	3D model in PDF can be activated (Acrobat Reader only).....	3
5	General Technical Data .....	4
6	Conductor connection .....	5
7	Material properties.....	5
8	Dimensions.....	6
9	Series drawing.....	7
10	Product note .....	8
11	Application.....	8
12	Packaging specifications .....	8
13	Mechanical tests.....	9
14	Electrical tests .....	10
15	Air and creepage distances .....	11
16	Current carrying capacity/derating curves .....	12
17	Environmental and durability tests .....	13
18	Approvals / Certificates.....	14
19	Commercial Data.....	15
20	Accessories.....	15

**4 3D model in PDF can be activated (Acrobat Reader only)**



**1751251 MKDS 1/ 3-3,5****5 General Technical Data****5.1 item properties**

Item no.	1751251
Type	MKDS 1/ 3-3,5
Product line	COMBICON Terminals S
Product type	PCB terminal block
Range of articles	MKDS 1
Pitch	3.5 mm
Number of positions	3
Number of rows	1
Number of connections	3
Number of potentials	3
Connection method	Screw connection with tension sleeve
Screw thread	M2
Drive form screw head	Slotted (L)
Connection direction of the conductor to the PCB	0 °
Pin layout	Linear pinning
Solder pins per potential	1
Type	PC termination block

## 1751251 MKDS 1/ 3-3,5

## 6 Conductor connection

### 6.1 Connection capacity

Conductor cross section, rigid	0.14 mm <sup>2</sup> ... 1.5 mm <sup>2</sup>
Conductor cross section, flexible	0.14 mm <sup>2</sup> ... 1.5 mm <sup>2</sup>
Conductor cross section flexible, with ferrule without plastic sleeve	0.25 mm <sup>2</sup> ... 0.5 mm <sup>2</sup>
Conductor cross section flexible, with ferrule with plastic sleeve	0.25 mm <sup>2</sup> ... 0.5 mm <sup>2</sup>
2 conductors with same cross section, solid	0.14 mm <sup>2</sup> ... 0.5 mm <sup>2</sup>
2 conductors with same cross section, stranded	0.14 mm <sup>2</sup> ... 0.34 mm <sup>2</sup>
Stripping length	5 mm
Tightening torque	0.22 Nm ... 0.25 Nm

### 6.2 Connection capacity AWG

Conductor cross section AWG	26 ... 16
-----------------------------	-----------

## 7 Material properties

### 7.1 Material of metal parts

Note	WEEE/RoHS-compliant, whisker-free acc. to IEC 60068-2-82/JEDEC JESD 201
Contact material	Cu alloy
Terminal point surface	Nickel (2 - 3 μm Ni) , Tin (5 - 7 μm Sn)
Soldering area surface	Nickel (2 - 3 μm Ni) , Tin (5 - 7 μm Sn)
Surface characteristics	Tin-plated

### 7.2 Material of plastic parts

	Housing
Color	green (RAL 6021)
Insulating material	PA
Insulating material group	I
CTI according to IEC 60112	600
Flammability rating according to UL 94	V0
Glow wire flammability index GWFI according to EN 60695-2-12	850
Glow wire ignition temperature GWIT according to EN 60695-2-13	775
Temperature for the ball pressure test according to EN 60695-10-2	125 °C

**1751251 MKDS 1/ 3-3,5****8 Dimensions****8.1 Dimensions for the product**

Length	7.3 mm
Width	11 mm
Height (without solder pin)	8.5 mm
Total height	12 mm
Solder pin [P]	3.5 mm



**1751251 MKDS 1/ 3-3,5****10 Product note****10.1 General information**

Note on application

For safe conductor connection, always adhere to a defined tightening torque. Particularly in the case of PCB terminal blocks with two or three positions, the individual solder pin for each contact point cannot compensate for this. That is why the terminal blocks must be supported during conductor connection (held with one hand, support on the housing).

**10.2 Dimensions for PCB design**

Hole diameter	1.1 mm
Pin dimensions	0.5 x 0.9 mm

**11 Application****12 Packaging specifications**

Type of packaging	packed in cardboard
Packing unit	250

**12.1 Temperature limit values**

Ambient temperature (storage/transport)	-40 °C ... 70 °C
Relative humidity (storage/transport)	30 % ... 70 %
Ambient temperature (assembly)	-5 °C ... 100 °C
Ambient temperature (operation)	-40 °C ... 105 °C (Depending on the current carrying capacity/derating curve)

**1751251 MKDS 1/ 3-3,5****13 Mechanical tests****13.1 Pull-out test**

Specification	IEC 60999-1:1999-11
Result	Test passed
Conductor cross section/conductor type/tractive force actual value	0.14 mm <sup>2</sup> / solid / > 10 N
Conductor cross section/conductor type/tractive force actual value	0.14 mm <sup>2</sup> / flexible / > 10 N
Conductor cross section/conductor type/tractive force actual value	1.5 mm <sup>2</sup> / solid / > 40 N
Conductor cross section/conductor type/tractive force actual value	1.5 mm <sup>2</sup> / flexible / > 40 N

**13.2 Check for damage to conductor or loosening**

Specification	IEC 60999-1:1999-11
Result	Test passed

**1751251 MKDS 1/ 3-3,5****14 Electrical tests**

Rated current / conductor cross section	17.5 A / 1.5 mm <sup>2</sup>
Rated insulation voltage (III/2)	200 V
Rated surge voltage (III/2)	2.5 kV
Contact resistance	1.79 mΩ
Degree of pollution	2

**14.1 Short-time withstand current test**

Specification	IEC 60947-7-4:2019-01
Result	Test passed
Conductor cross section/short-time current	1.5 mm <sup>2</sup> / 54 A

**14.2 Aging test (climatic impact and corrosion testing)**

Specification	IEC 60947-7-4:2019-01
Result	Test passed
Contact resistance R <sub>1</sub>	1.79 mΩ / 1.5 mm <sup>2</sup>
Test sequence 1: low temperature storage	-40 °C / 2 h
Test sequence 2: heat storage	168 h/105 °C
Test sequence 3: noxious gas storage (ISO 6988)	KFW 0.2 S/1 cycle
Contact resistance R <sub>2</sub>	1.76 mΩ / 1.5 mm <sup>2</sup>
Rated impulse voltage at sea level Voltage waveform ≥ (1.2/50 μs)	2.95 kV
Power-frequency withstand voltage Voltage waveform ≥ (50/60 Hz)	2.2 kV

**14.3 Insulation resistance**

Specification	IEC 60512-3-1:2002-02
Result	Test passed
Insulation resistance, neighboring positions	> 5 MΩ

**14.4 Mechanical connection test for the PCB terminal block**

Specification	IEC 60947-7-4:2019-01
Result	Test passed

**14.5 Temperature rise test**

Specification	IEC 60947-7-4:2019-01
Result	Test passed
Requirement temperature-rise test	The sum of ambient temperature and temperature rise of the PCB terminal block shall not exceed the upper limiting temperature.
Conductor cross section/test current/temperature rise	1.5 mm <sup>2</sup> / 17.5 A / 78.8 K

**1751251 MKDS 1/ 3-3,5****15 Air and creepage distances**

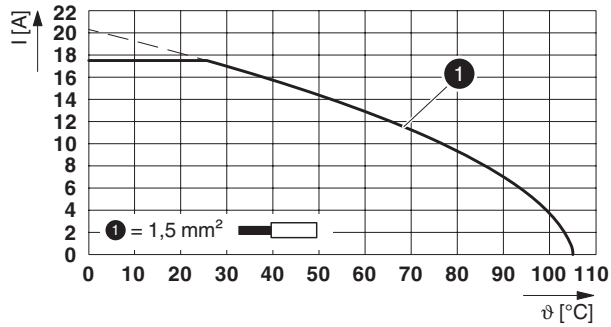
Component	PCB terminal block		
Specification	IEC 60947-1:2007-06 + A1:2010-12 + A2:2014-09		
Mains type	unearthed mains		
Insulating material group	I		
Comparative tracking index (IEC 60112)	CTI 600		
Rated insulation voltage	160 V	200 V	400 V
Rated surge voltage	2.5 kV	2.5 kV	2.5 kV
Degree of pollution	3	2	2
Overvoltage category	III	III	II
Minimum clearance case A (inhomogeneous field)	1.5 mm	1.5 mm	1.5 mm
Minimum value of the creepage path requirement in acc. with table	2 mm	1.5 mm	2 mm

## 1751251 MKDS 1/ 3-3,5

## 16 Current carrying capacity/derating curves

Specification	IEC 60947-7-4:2019-01
Note	Representation based on IEC 60512-5-2:2002-02
Reduction factor	1
Number of positions	4
Conductor cross section	1.5 mm <sup>2</sup>

Type: MKDS 1/...-3,5



**1751251 MKDS 1/ 3-3,5****17 Environmental and durability tests****17.1 Vibration test**



Specification	IEC 60068-2-6:2007-12
Result	Test passed
Frequency	10 - 150 - 10 Hz
Sweep speed	1 octave/min
Amplitude	0.35 mm (10 Hz ... 60.1 Hz)
Acceleration	5g (60.1 Hz ... 150 Hz)
Test duration per axis	2.5 h
Test directions	X-, Y- and Z-axis
Note	

**17.2 Assessment of fire risk (glow wire test)**

Specification	IEC 60695-2-10:2013-04		
Result	Test passed		
Temperature	850 °C		
Time of exposure	5 s		

## 1751251 MKDS 1/ 3-3,5

## 18 Approvals / Certificates

cULus Recognized 	Voltage [V]	Current [A]	Cross section [AWG]	Cross section [mm <sup>2</sup> ]
<b>Usegroup B</b>				
Nur flexible Leiter	300 V	13.5 A	30 - 16	-
Standard	300 V	10 A	30 - 16	-
<b>Usegroup D</b>				
Nur flexible Leiter	150 V	13.5 A	30 - 16	-
Standard	300 V	10 A	30 - 16	-
VDE Zeichengenehmigung 	Voltage [V]	Current [A]	Cross section [AWG]	Cross section [mm <sup>2</sup> ]
	200 V	17.5 A	-	0.2 - 1.5

**1751251 MKDS 1/ 3-3,5****19 Commercial Data**

Item no.	1751251
Type	MKDS 1/ 3-3,5
Packing unit	250
Net weight	1.467 g
GTIN	4017918028336
	Information that applies locally, see link on page 1

**20 Accessories**

Description	Item No.	Type
Screwdriver, slot-headed, VDE insulated, size: 0.4 x 2.5 x 80 mm, 2-component grip, with non-slip grip	1205037	SZS 0,4X2,5 VDE
	0804073	SK 3,5/2,8:FORTL.ZAHLEN
Marker pen, for manual labeling of unprinted Zack strips, smear-proof and waterproof, line thickness 0.5 mm	1051993	B-STIFT