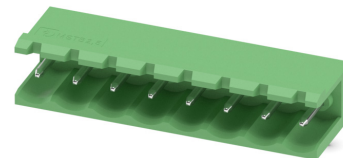


Item No.: 1754559

Type: MSTB 2,5/ 8-G

PCB headers



1 Main features



- | | | | |
|-------------------------|---------------------|------------------------|---------------------|
| • No. of pos. | 8 | • Nominal current | 12 A |
| • Nominal cross section | 2.5 mm ² | • Nominal voltage | 320 V |
| • Color | green (RAL 6021) | • Connection direction | 0 ° |
| • Pitch | 5 mm | • Type of packaging | packed in cardboard |
| • Mounting type | Wave soldering | | |

2 Your advantages

- ✓ Maximum flexibility when it comes to device design – one header for connectors with different connection technologies
- ✓ Easy PCB replacement thanks to plug-in modules
- ✓ Well-known mounting principle allows worldwide use
- ✓ Items that can be aligned in various pitches support flexible and space-saving PCB assembly

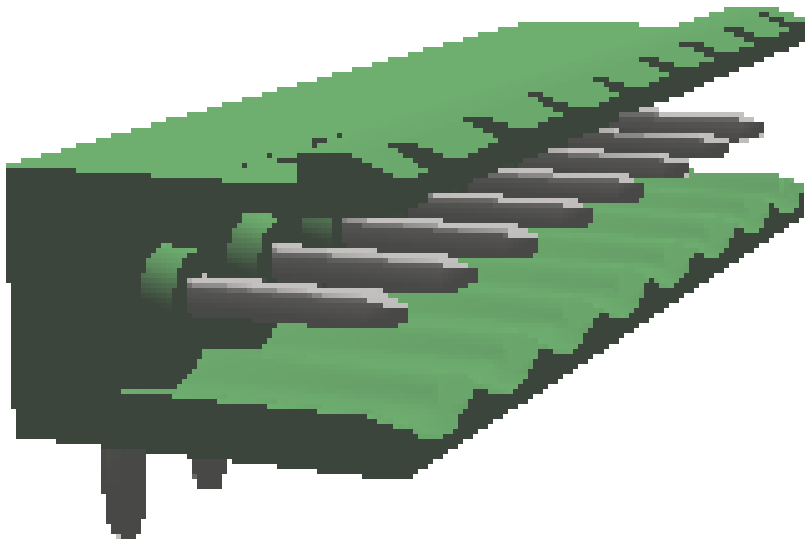


Make sure you always use the latest documentation.
It can be downloaded at: phoenixcontact.com/product/1754559

1754559 MSTB 2,5/ 8-G**3 Table of contents**

1	Main features.....	1
2	Your advantages	1
3	Table of contents	2
4	3D model in PDF can be activated (Acrobat Reader only).....	3
5	General Technical Data	4
6	Mounting.....	5
7	Material properties.....	5
8	Dimensions.....	6
9	Series drawing.....	7
10	Product notes	8
11	Application.....	8
12	Packaging specifications	8
13	Mechanical tests.....	9
14	Insertion and withdrawal forces	10
15	Electrical tests	11
16	Air and creepage distances	12
17	Current carrying capacity/derating curves	13
18	Environmental and durability tests	16
19	Data transmission.....	17
20	Approvals / Certificates.....	18
21	Commercial Data.....	19
22	corresponding plugs	19
23	Accessories.....	19
24	Combination tests.....	20

4 3D model in PDF can be activated (Acrobat Reader only)



1754559 MSTB 2,5/ 8-G**5 General Technical Data****5.1 item properties**

Item no.	1754559
Type	MSTB 2,5/ 8-G
Product line	COMBICON Connectors M
Connector system	COMBICON MSTB 2,5
Product type	PCB headers
Contact connection type	Pin
Range of articles	MSTB 2,5/..-G
Pitch	5 mm
Number of positions	8
Number of rows	1
Number of connections	8
Number of potentials	8
Connection direction of the connector to the PCB	0 °
Pin layout	Linear pinning
Solder pins per potential	1
Type	Standard

1754559 MSTB 2,5/ 8-G**6 Mounting****6.1 Flange mounting**

Type of locking	without
Mounting flange	without

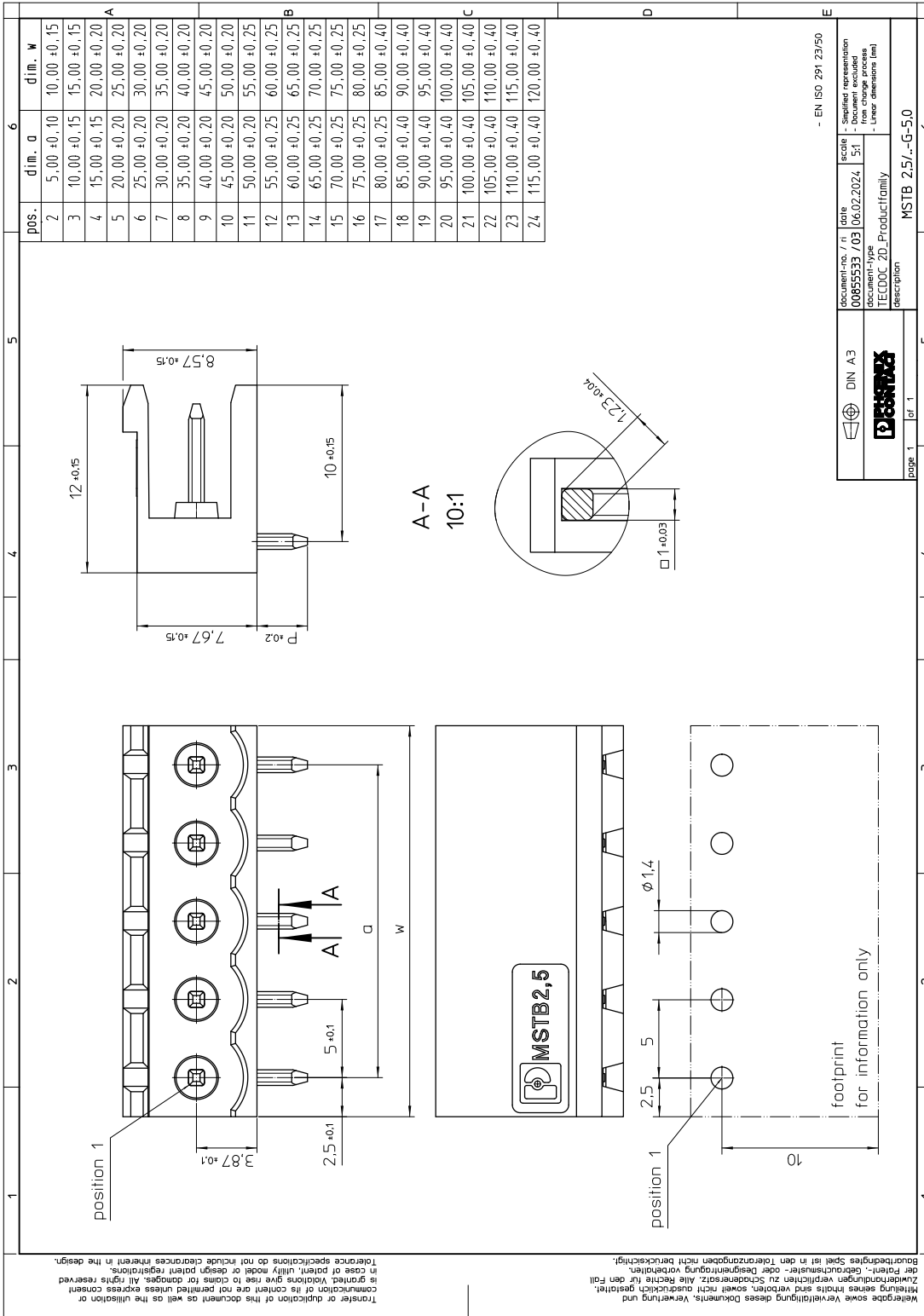
7 Material properties**7.1 Material of metal parts**

Note	WEEE/RoHS-compliant, whisker-free acc. to IEC 60068-2-82/JEDEC JESD 201
Contact material	Cu alloy
Surface contact area	Nickel (1.3 - 3 µm Ni) , Tin (3 - 5 µm Sn)
Soldering area surface	Nickel (1.3 - 3 µm Ni) , Tin (3 - 5 µm Sn)
Surface characteristics	Tin-plated
Insulating material data	Housing
Color	green (RAL 6021)
Insulating material	PA
Insulating material group	I
CTI according to IEC 60112	600
Flammability rating according to UL 94	V0
Glow wire flammability index GWFI according to EN 60695-2-12	850
Glow wire ignition temperature GWIT according to EN 60695-2-13	775
Temperature for the ball pressure test according to EN 60695-10-2	125 °C

1754559 MSTB 2,5/ 8-G**8 Dimensions****8.1 Dimensions for the product**

Length	12 mm
Width	40 mm
Height (without solder pin)	8.57 mm
Total height	11.8 mm
Solder pin [P]	3.23 mm

9 Series drawing



document-no. / n	00655533 / 03	date	06.02.2024	scale	1:1
document-type	TECDOC 2D_Productfamily	description	MSTB 2,5/-G-5.0		
- EN ISO 291 23/50 scale - Supplied representation - Linear dimensions (mm) - Linear dimensions (mm)					

Weitergabe sowie Vervielfältigung dieses Dokuments, Verwertung und
 die Weiterentwicklung oder Designanpassung sind ausdrücklich gestattet.
 Weitergabe dieses Dokuments ist jedoch nicht ausdrücklich gestattet.
 Mithilfe dieses Dokuments ist die Weiterentwicklung oder Designanpassung
 ausdrücklich gestattet. Alle Rechte für den Fall
 der Patent-, Gebrauchsmuster- oder Designrechte vorbehalten.
 Boundaries of this document are not included in the design.
 Transfer or duplication of this document as well as the utilization or
 communication of its content are not permitted unless express consent
 is granted. Violations give rise to claims for damages. All rights reserved.
 in case of patent, utility model or design patent registrations.
 Tolernce specifications do not include clearances inherent in the design.

1754559 MSTB 2,5/ 8-G**10 Product notes****10.1 General information**

Notes on operation

In accordance with IEC 61984, COMBICON connectors have no switching power (COC). During designated use, they must not be plugged in or disconnected when carrying voltage or under load.

11 Application**12 Packaging specifications**

Type of packaging	packed in cardboard
-------------------	---------------------

Packing unit	100
--------------	-----

12.1 Temperature limit values

Ambient temperature (storage/transport)	-40 °C ... 70 °C
---	------------------

Relative humidity (storage/transport)	30 % ... 70 %
---------------------------------------	---------------

Ambient temperature (assembly)	-5 °C ... 100 °C
--------------------------------	------------------

Ambient temperature (operation)	-40 °C ... 100 °C (dependent on the derating curve)
---------------------------------	---

1754559 MSTB 2,5/ 8-G**13 Mechanical tests****13.1 Visual examination**

Specification	IEC 61984:2008-10
Visual examination	Test passed
Specification	IEC 60512-1-1:2002-02

13.2 Dimensional test

Dimensional test	Test passed
Specification	IEC 60512-1-2:2002-02

13.3 Resistance of marking

Resistance of marking	Test passed
Specification	IEC 60068-2-70:1995-12

13.4 Polarization and coding

Polarization and coding	Test passed
Specification	IEC 60512-13-5:2006-02
Test force	20 N

13.5 Contact retention in insert

Contact holder in insert Requirements >20 N	Test passed
Specification	IEC 60512-15-1:2008-05

1754559 MSTB 2,5/ 8-G**14 Insertion and withdrawal forces**

Insertion and withdrawal force	
Specification	Test passed
No. of cycles	25
Insertion strength per pos. approx.	8 N
Withdraw strength per pos. approx.	6 N

1754559 MSTB 2,5/ 8-G**15 Electrical tests**

Rated current / conductor cross section	12 A / 2.5 mm ²
Rated insulation voltage (III/2)	320 V
Rated surge voltage (III/2)	4 kV
Contact resistance	1.7 mΩ
Degree of pollution	2

1754559 MSTB 2,5/ 8-G**16 Air and creepage distances**

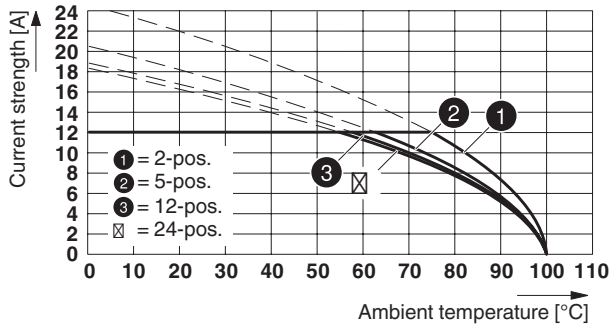
Component	PCB headers		
Specification	IEC 60664-1:2007-04		
Mains type	unearthed mains		
Insulating material group	I		
Comparative tracking index (IEC 60112)	CTI 600		
Rated insulation voltage	320 V	320 V	630 V
Rated surge voltage	4 kV	4 kV	4 kV
Degree of pollution	3	2	2
Overvoltage category	III	III	II
Minimum clearance case A (inhomogeneous field)	3 mm	3 mm	3 mm
Minimum value of the creepage path requirement in acc. with table	4 mm	3 mm	3.2 mm

1754559 MSTB 2,5/ 8-G

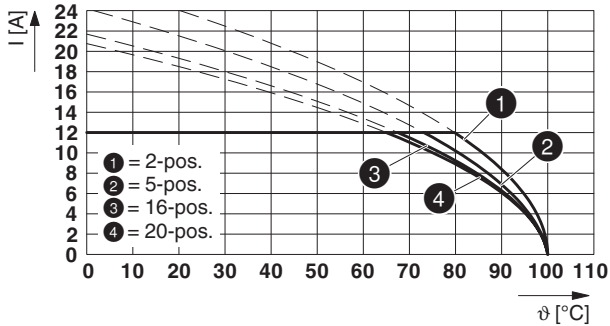
17 Current carrying capacity/derating curves

Specification	IEC 61984:2008-10
Note	Representation based on IEC 60512-5-2:2002-02
Note	For number of positions, see diagram
Reduction factor	0.8
Conductor cross section	2.5 mm ²

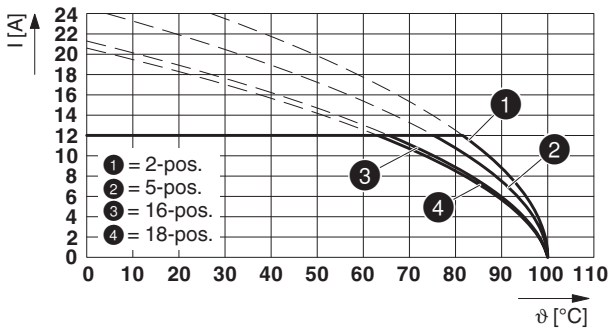
Type: FRONT-MSTB 2,5/..-ST with MSTB 2,5/...-G



Type: FKCT 2,5/...-ST with MSTB 2,5/...-G

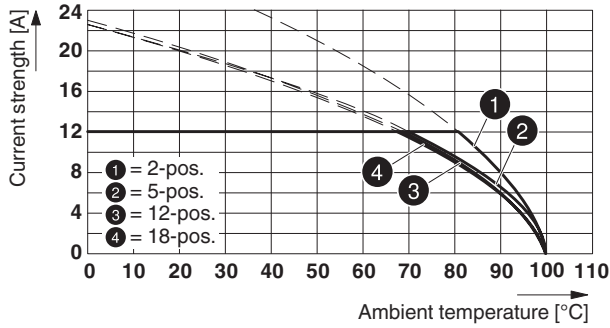


Type: FKCV(W/R) 2,5/...-ST with MSTB 2,5/...-G

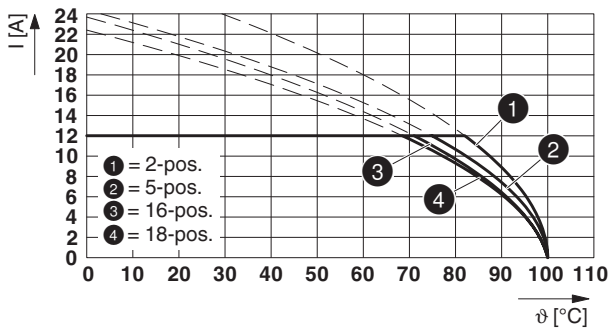


1754559 MSTB 2,5/ 8-G

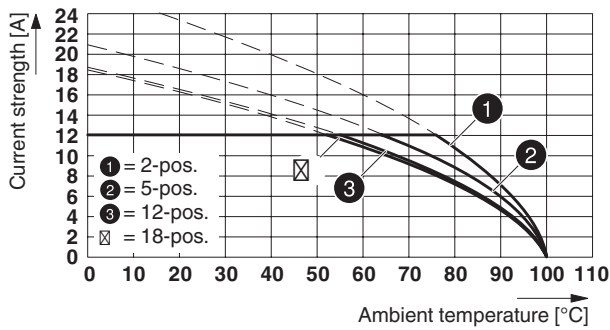
Type: MSTBTP 2,5/...-ST with MSTB 2,5/...-G



Type: FKCN 2,5/...-ST with MSTB 2,5/...-G

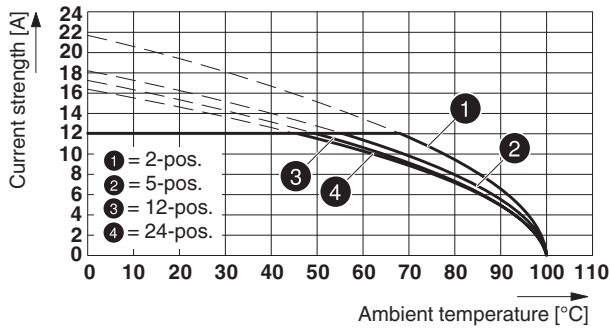


Type: FKCS 2,5/...-ST with MSTB 2,5/...-G

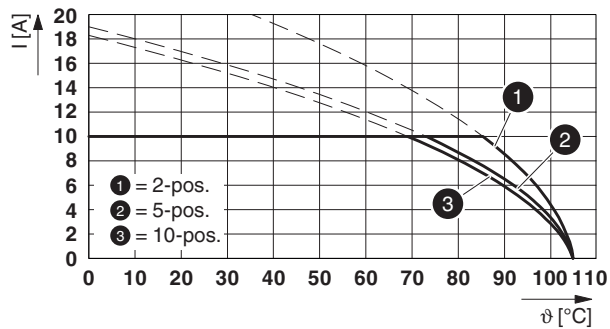


1754559 MSTB 2,5/ 8-G

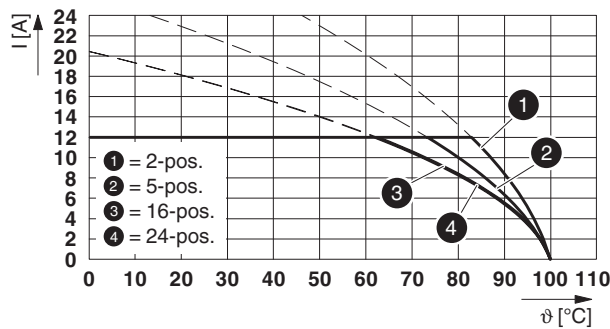
Type: SMSTB 2,5/...-ST with MSTB 2,5/...-G



Type: TVFKC 1,5/...-ST with MSTB 2,5/...-G



Type: MSTB 2,5/...-ST with MSTB 2,5/...-G



1754559 MSTB 2,5/ 8-G**18 Environmental and durability tests****18.1 Vibration test**

Specification	IEC 60068-2-6:2007-12
Result	Test passed
Frequency	10 - 150 - 10 Hz
Sweep speed	1 octave/min
Amplitude	0.35 mm (10 Hz ... 60.1 Hz)
Acceleration	5g (60.1 Hz ... 150 Hz)
Test duration per axis	2.5 h
Test directions	X-, Y- and Z-axis
Note	The connecting cables must be strain relieved.

18.2 Insulation resistance




Specification	IEC 60512-3-1:2002-02
Result	Test passed
Insulation resistance, neighboring positions	> 5 MΩ

1754559 MSTB 2,5/ 8-G

19 Data transmission

1754559 MSTB 2,5/ 8-G

20 Approvals / Certificates

CSA 	Voltage [V]	Current [A]	Cross section [AWG]	Cross section [mm ²]
Usegroup B				
	300 V	10 A	-	-
Usegroup D				
	300 V	10 A	-	-
cULus Recognized 	Voltage [V]	Current [A]	Cross section [AWG]	Cross section [mm ²]
Usegroup B				
	300 V	15 A	-	-
Usegroup D				
	300 V	10 A	-	-
VDE Zeichengenehmigung 	Voltage [V]	Current [A]	Cross section [AWG]	Cross section [mm ²]
	250 V	12 A	-	-

1754559 MSTB 2,5/ 8-G**21 Commercial Data**

Item no.	1754559
Type	MSTB 2,5/ 8-G
Packing unit	100
Net weight	2.6 g
GTIN	4017918028725
	Information that applies locally, see link on page 1

22 corresponding plugs

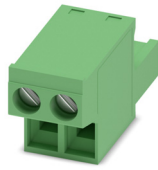
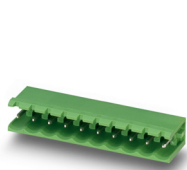
Item no.	Type
1713897	TVFKC 1,5/ 8-ST
1715989	TVFKCL 1,5/ 8-ST
1718025	QC 1,5/ 8-ST
1732807	FKCN 2,5/ 8-ST
1754562	MSTB 2,5/ 8-ST
1758982	MSTB 2,5/ 8-STZ
1765836	MSTBP 2,5/ 8-ST
1768448	SMSTB 2,5/ 8-ST
1779479	FRONT-MSTB 2,5/ 8-ST
1779893	MSTBT 2,5/ 8-ST
1784309	MVSTBW 2,5/ 8-STEH
1792074	MVSTBR 2,5/ 8-ST
1792582	MVSTBW 2,5/ 8-ST
1909278	FKCT 2,5/ 8-ST
1909773	FKCVR 2,5/ 8-ST
1910092	FKCVW 2,5/ 8-ST
1910416	FKC 2,5/ 8-ST
1974795	FKCS 2,5/ 8-ST

23 Accessories

Description	Item No.	Type
Coding section, inserted into the recess in the header or the inverted plug, red insulating material	1734401	CR-MSTB
Mounting flange, for fixing both ends of the header onto the PCB, green insulating material, with M 2 x 14 screws and nuts.	1759981	MSTB-BF
Keying cap, for forming sections, plugs onto header pin, green insulating material	1755477	MSTB-BL
	0804183	SK 5/3,8:FORTL.ZAHLEN

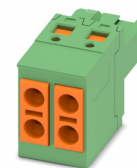
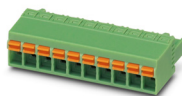
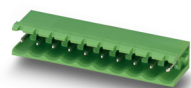
1754559 MSTB 2,5/ 8-G

24 Combination tests



MSTB 2,5/..-G	FRONT-MSTB 2,5/..-ST	FKCT 2,5/..-ST	FKCVW 2,5/..-ST	MSTBTP 2,5/..-ST
IEC 61984	IEC 61984	IEC 61984	IEC 61984	IEC 61984
Mechanical tests (A)				
Insertion/withdrawal force per position	approx. 8 N / 6 N	approx. 8 N / 6 N	approx. 8 N / 6 N	approx. 9 N / 9 N
Polarization when inserted Requirement >20 N	Test passed	Test passed	Test passed	Test passed
Contact holder in insert Requirements >20 N	Test passed	Test passed	Test passed	Test passed
Durability tests (B)				
Contact resistance R ₁ 1st level	1.7 mΩ	1.1 mΩ	1 mΩ	1.2 mΩ
Contact resistance R ₁ 2nd level				
Insertion/withdrawal cycles	25	25	25	25
Contact resistance R ₂	1.8 mΩ	1.2 mΩ	1.2 mΩ	1.3 mΩ
Rated impulse voltage at sea level Voltage waveform ≥ (1.2/50 μs)	4.8 kV	4.8 kV	4.8 kV	4.8 kV
Power-frequency withstand voltage Voltage waveform ≥ (50/60 Hz)	2.21 kV	2.21 kV	2.21 kV	2.21 kV
Insulation resistance Requirements > 5 MΩ	> 5 MΩ	> 5 MΩ	> 5 MΩ	> 5 MΩ
Thermal tests (C)				
Tested number of positions	24	20	18	18
Tested conductor cross section	2.5 mm ²	2.5 mm ²	2.5 mm ²	2.5 mm ²
Test current	12 A	12 A	12 A	12 A
Upper limiting temperature Requirements < 100°C	Test passed	Test passed	Test passed	Test passed
Climatic tests (D)				
Test sequence 1: low temperature storage	-40 °C/2 h	-40 °C/2 h	-40 °C/2 h	-40 °C/2 h
Test sequence 2: heat storage	100 °C/168 h	100 °C/168 h	100 °C/168 h	100 °C/168 h
Test sequence 3: noxious gas storage	0.2 dm ³ SO ₂ on 300 dm ³ / 40 °C/1 cycle	0.2 dm ³ SO ₂ on 300 dm ³ / 40 °C/1 cycle	0.2 dm ³ SO ₂ on 300 dm ³ / 40 °C/1 cycle	0.2 dm ³ SO ₂ on 300 dm ³ / 40 °C/1 cycle
Rated impulse voltage at sea level Voltage waveform ≥ (1.2/50 μs)	4.8 kV	4.8 kV	4.8 kV	4.8 kV
Power-frequency withstand voltage Voltage waveform ≥ (50/60 Hz)	2.21 kV	2.21 kV	2.21 kV	2.21 kV
Environmental and endurance tests (E)				
Specification	IEC 61984:2008-10	IEC 61984:2008-10	IEC 61984:2008-10	IEC 61984:2008-10
Degree of protection	Finger safety with IP20 test finger	Finger safety with IP20 test finger	Finger safety with IP20 test finger	Finger safety with IP20 test finger

1754559 MSTB 2,5/ 8-G

**MSTB 2,5/..-G**

IEC 61984

FKCN 2,5/..-ST

IEC 61984

FKCS 2,5/..-ST

IEC 61984

SMSTB 2,5/..-ST

IEC 61984

TVFKC 1,5/..-ST

IEC 61984

Mechanical tests (A)

Insertion/withdrawal force per position	approx. 8 N / 6 N	approx. 8 N / 6 N	approx. 8 N / 6 N	approx. 8 N / 6 N
Polarization when inserted Requirement >20 N	Test passed	Test passed	Test passed	Test passed
Contact holder in insert Requirements >20 N	Test passed	Test passed	Test passed	Test passed

Durability tests (B)

Contact resistance R ₁ 1st level	1.1 mΩ	1 mΩ	2.3 mΩ	1.3 mΩ
Contact resistance R ₁ 2nd level				
Insertion/withdrawal cycles	25	25	25	25
Contact resistance R ₂	1.1 mΩ	1.1 mΩ	2.3 mΩ	1.4 mΩ
Rated impulse voltage at sea level Voltage waveform ≥ (1.2/50 μs)	4.8 kV	4.8 kV	4.8 kV	4.8 kV
Power-frequency withstand voltage Voltage waveform ≥ (50/60 Hz)	2.21 kV	2.21 kV	2.21 kV	2.21 kV
Insulation resistance Requirements > 5 MΩ	> 5 MΩ	> 5 MΩ	> 5 MΩ	> 5 MΩ

Thermal tests (C)

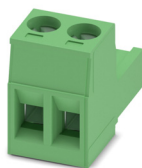
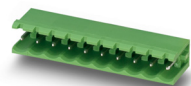
Tested number of positions	18	18	24	10
Tested conductor cross section	2.5 mm ²	2.5 mm ²	2.5 mm ²	1.5 mm ²
Test current	12 A	12 A	12 A	10 A
Upper limiting temperature Requirements < 100°C	Test passed	Test passed	Test passed	Test passed

Climatic tests (D)

Test sequence 1: low temperature storage	-40 °C/2 h	-40 °C/2 h	-40 °C/2 h	-40 °C/2 h
Test sequence 2: heat storage	100 °C/168 h	100 °C/168 h	100 °C/168 h	105 °C/168 h
Test sequence 3: noxious gas storage	0.2 dm ³ SO ₂ on 300 dm ³ / 40 °C/1 cycle	0.2 dm ³ SO ₂ on 300 dm ³ / 40 °C/1 cycle	0.2 dm ³ SO ₂ on 300 dm ³ / 40 °C/1 cycle	0.2 dm ³ SO ₂ on 300 dm ³ / 40 °C/1 cycle
Rated impulse voltage at sea level Voltage waveform ≥ (1.2/50 μs)	4.8 kV	4.8 kV	4.8 kV	4.8 kV
Power-frequency withstand voltage Voltage waveform ≥ (50/60 Hz)	2.21 kV	2.21 kV	2.21 kV	2.21 kV

Environmental and endurance tests (E)

Specification	IEC 61984:2008-10	IEC 61984:2008-10	IEC 61984:2008-10	IEC 61984:2008-10
Degree of protection	Finger safety with IP20 test finger	Finger safety with IP20 test finger	Finger safety with IP20 test finger	Finger safety with IP20 test finger

1754559 MSTB 2,5/ 8-G**MSTB 2,5/..-G**

IEC 61984

Mechanical tests (A)

Insertion/withdrawal force per position

Polarization when inserted
Requirement >20 NContact holder in insert
Requirements >20 N**Durability tests (B)**Contact resistance R₁ 1st levelContact resistance R₁ 2nd level

Insertion/withdrawal cycles

Contact resistance R₂Rated impulse voltage at sea level
Voltage waveform ≥ (1.2/50 μs)Power-frequency withstand voltage
Voltage waveform ≥ (50/60 Hz)Insulation resistance
Requirements > 5 MΩ**Thermal tests (C)**

Tested number of positions

Tested conductor cross section

Test current

Upper limiting temperature
Requirements < 100°C**Climatic tests (D)**

Test sequence 1: low temperature storage

Test sequence 2: heat storage

Test sequence 3: noxious gas storage

Rated impulse voltage at sea level
Voltage waveform ≥ (1.2/50 μs)Power-frequency withstand voltage
Voltage waveform ≥ (50/60 Hz)**Environmental and endurance tests (E)**

Specification

Degree of protection

MSTB 2,5/..-ST

IEC 61984

approx. 8 N / 6 N

Test passed

Test passed

1.4 mΩ

25

1.5 mΩ

4.8 kV

2.21 kV

> 5 MΩ

24

2.5 mm²

12 A

Test passed

-40 °C/2 h

100 °C/168 h

0.2 dm³ SO₂ on 300 dm³/
40 °C/1 cycle

4.8 kV

2.21 kV

IEC 61984:2008-10

Finger safety with IP20
test finger