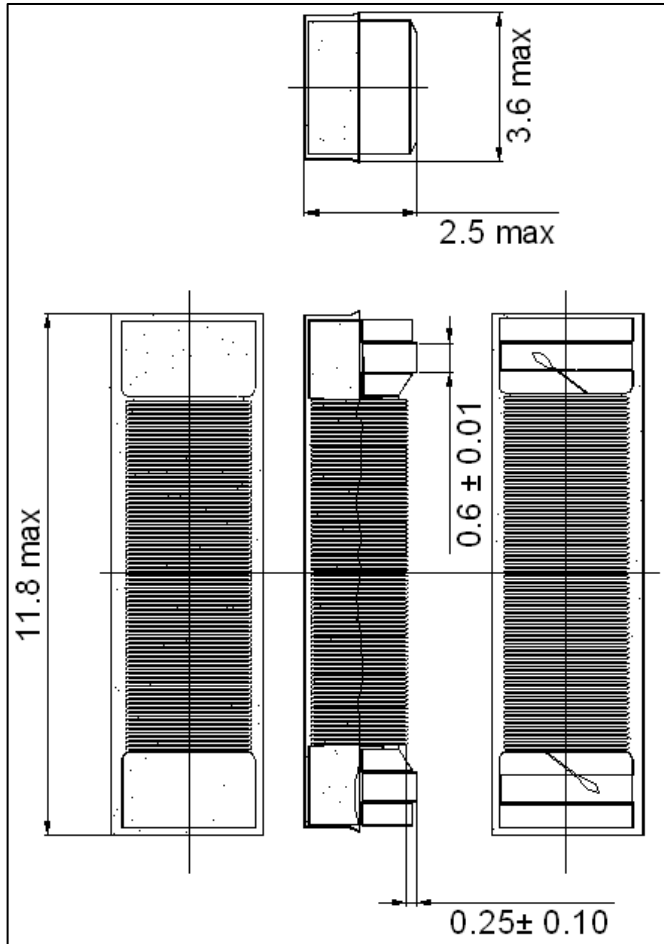
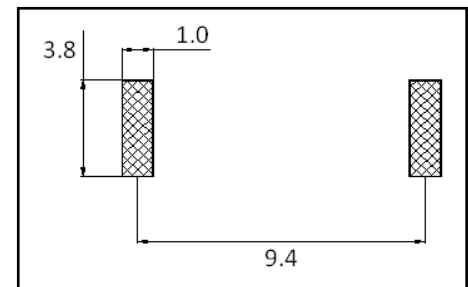


1. Dimensions and Recommended Pad Layout

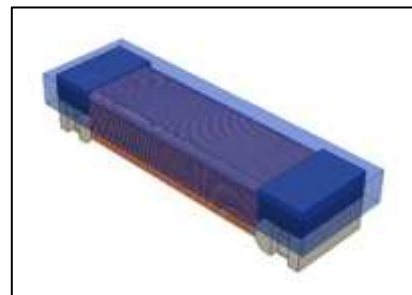
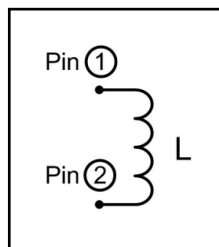


Recommended pad layout



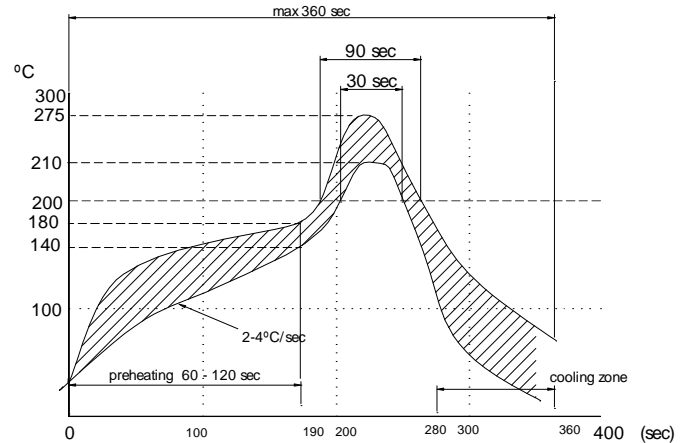
All dimensions in mm

2. Schematic Diagram



3. General Specifications. Recommended Reflow Profile

- Operating Frequency: 13.56 MHz
- Operating Temperature: -40 °C → +120 °C
- Operating Voltage: < 50 V
- Operating Current: < 5mA



Lead Free Reflow Profile

4. Electrical Characteristics

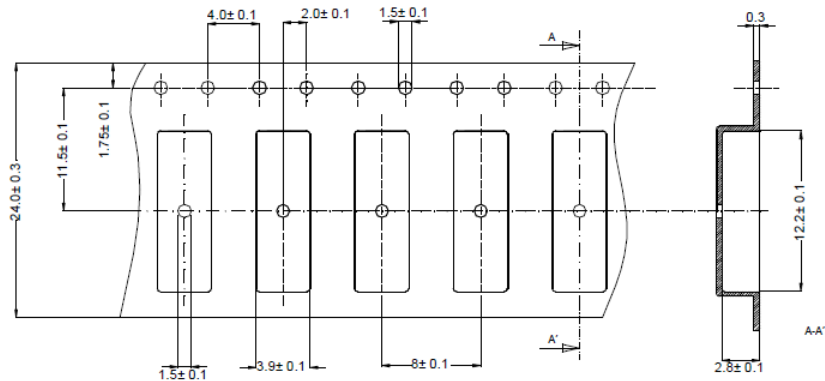
SDTR1103CAP (1μH – 20μH)

Code	L @13,56 MHz	Q min. @13,56MHz	SRF min. (MHz)	DCR. (Ohm)
SDTR1103-HF2-0001K	1.0 ± 10%	20	25	0.260 ± 10%
SDTR1103-HF2-0002K	2.0 ± 10%	20	25	0.395 ± 10%
SDTR1103-HF2-0003K	3.0 ± 10%	20	25	0.460 ± 10%
SDTR1103-HF2-0006K	6.00 ± 10%	20	25	0.640 ± 10%
SDTR1103-HF2-0020K	20.00 ± 10%	20	25	1.2 ± 10%

Inductance, Q factor, DCR and SRF measured with an LCR meter HP 4887A

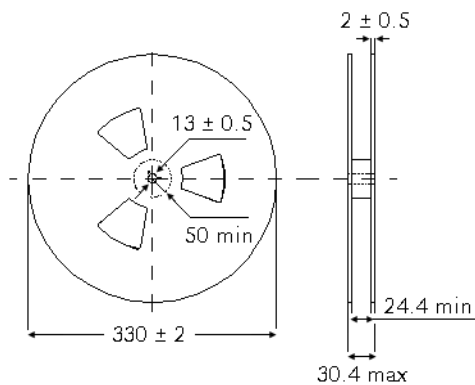
5. Packaging Information

TAPING SPECIFICATION (According to EIA481)



All dimensions in mm

REEL



All dimensions in mm

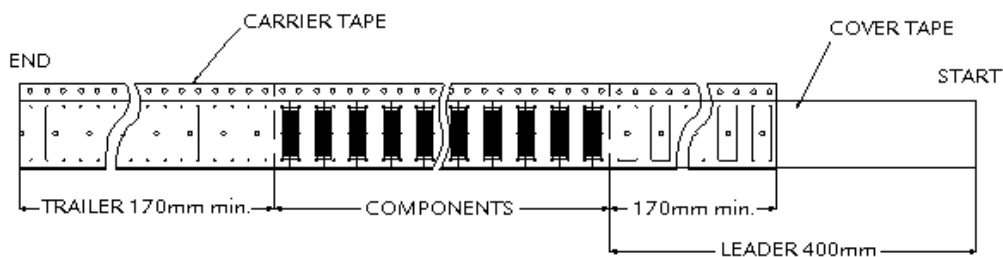
PARTS PER REEL

7"
3000

MATERIAL LIST

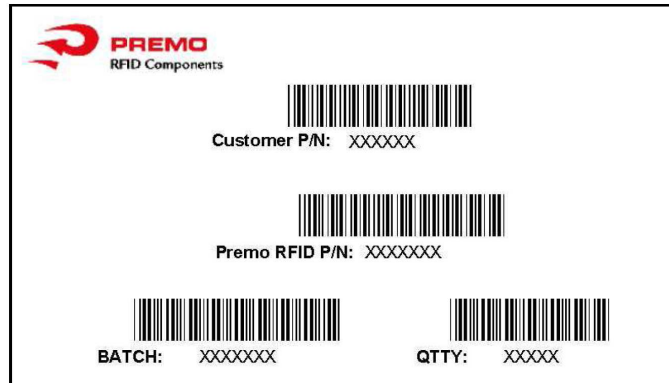
ITEM	MATERIAL
Reel	Shock-Proof Polystyrol antistatic
Carrier tape	PET 0.3mm antistatic
Cover tape	Polyester with antistatic coating

TAPING



6. Labelling

Parts are not individually labelled



PACKAGE LABELLING

7. Reliability Tests

This part is according to AEC-Q200 Revision C.