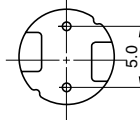
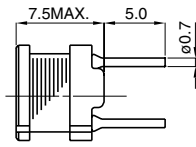
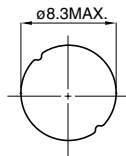


8ø series
RCH-875
Outline

They are small size 6ø,8ø,10ø series high power inductors which are used for switching power supply with high reliability,high efficiency and saturation.Each series has a magnetically shielded type to prevent noise radiation

Dimensions (mm)
CONSTRUCTION


(10μH – 10mH)



Tolerance of Inductance
 10μH - 12μH ± 20% (M)
 15μH - 10mH ± 10% (K)

◆ TYPE RCH-875

Parts No.	Inductance	D.C.R. (Ω) (Max) Typical / Rated D. C. Current (A)	Parts No.	Inductance	D.C.R. (Ω) (Max) Typical / Rated D. C. Current (A)
100	10μH	0.05 (0.03) / 2.90	821	820μH	2.56 (2.07) / 0.30
120	12μH	0.06 (0.03) / 2.50	102	1.0mH	2.94 (2.38) / 0.27
150	15μH	0.07 (0.05) / 2.20	122	1.2mH	4.04 (3.10) / 0.24
180	18μH	0.08 (0.05) / 1.90	152	1.5mH	4.70 (3.57) / 0.22
220	22μH	0.09 (0.06) / 1.80	182	1.8mH	5.05 (3.99) / 0.20
270	27μH	0.11 (0.08) / 1.70	222	2.2mH	6.25 (4.82) / 0.18
330	33μH	0.13 (0.09) / 1.50	272	2.7mH	8.72 (6.58) / 0.16
390	39μH	0.14 (0.10) / 1.30	332	3.3mH	10.60 (7.57) / 0.15
470	47μH	0.15 (0.11) / 1.30	392	3.9mH	14.20 (10.6) / 0.14
560	56μH	0.18 (0.14) / 1.20	472	4.7mH	16.70 (12.7) / 0.12
680	68μH	0.20 (0.16) / 1.10	562	5.6mH	18.70 (13.7) / 0.11
820	82μH	0.24 (0.19) / 1.00	682	6.8mH	21.80 (16.2) / 0.10
101	100μH	0.28 (0.23) / 0.89	822	8.2mH	28.70 (21.8) / 93m
121	120μH	0.36 (0.29) / 0.81	103	10mH	33.00 (25.7) / 84m
151	150μH	0.42 (0.35) / 0.72	123	12mH	
181	180μH	0.57 (0.45) / 0.66	153	15mH	
221	220μH	0.63 (0.52) / 0.57	183	18mH	
271	270μH	0.88 (0.71) / 0.51	223	22mH	
331	331μH	1.05 (0.78) / 0.46	273	27mH	
391	390μH	1.17 (0.91) / 0.44	333	33mH	
471	470μH	1.34 (1.04) / 0.41	393	39mH	
561	560μH	1.72 (1.36) / 0.36	473	47mH	
681	680μH	1.96 (1.56) / 0.33			

Measuring Freq. (L) 10μH – 82μH (2.52MHz) 100μH – 47mH (1kHz)

This indicates the value of the current when the inductance is 10% lower than its initial value at D.C. superimposition or D.C. current when at t=40°C, whichever is lower. (Ta=20°C)

Sales Contact

North America
 1701 Golf Road, Tower 3
 Suite 400, Rolling
 Meadows, IL 60008, USA
 Tel: (1) 847 545-6700
 Fax: (1) 847 545-6720

Japan
 Nihonbashi- ingyocho
 2-Chome, Chuo-ku,
 Tokyo, Japan
 Tel: (81) 03 3667-3301
 Fax: (81) 03 3667-3456

Hong Kong
 14/F, Eastern Centre,
 1065 King's Road, Quarry
 Road, Hong Kong
 Tel: (852) 2880-6688
 Fax: (852) 2880-9596

Taiwan
 No. 171, Futech Street,
 Hsin-I, Taipei, Taiwan,
 ROC
 Tel: (886) 2 2726-2177
 Fax: (886) 2 2728-2726

Singapore
 996 Bendemeer
 Road #04-05 to 06
 Singapore 339944
 Tel: (65) 2963-388
 Fax: (65) 2963-390

Europe
 Chaussee de Tervuren113A,
 1160 Brussels
 Belgium
 Email:
 europe.sales@hk.sumida.com