

4

3

2

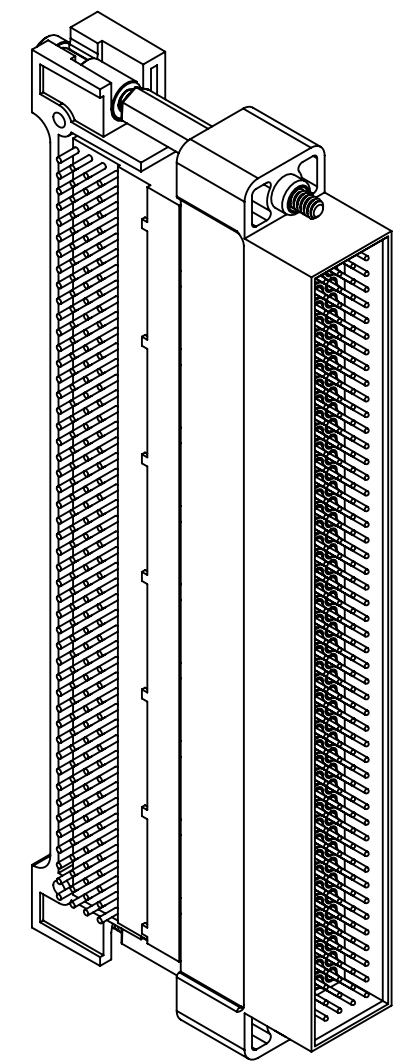
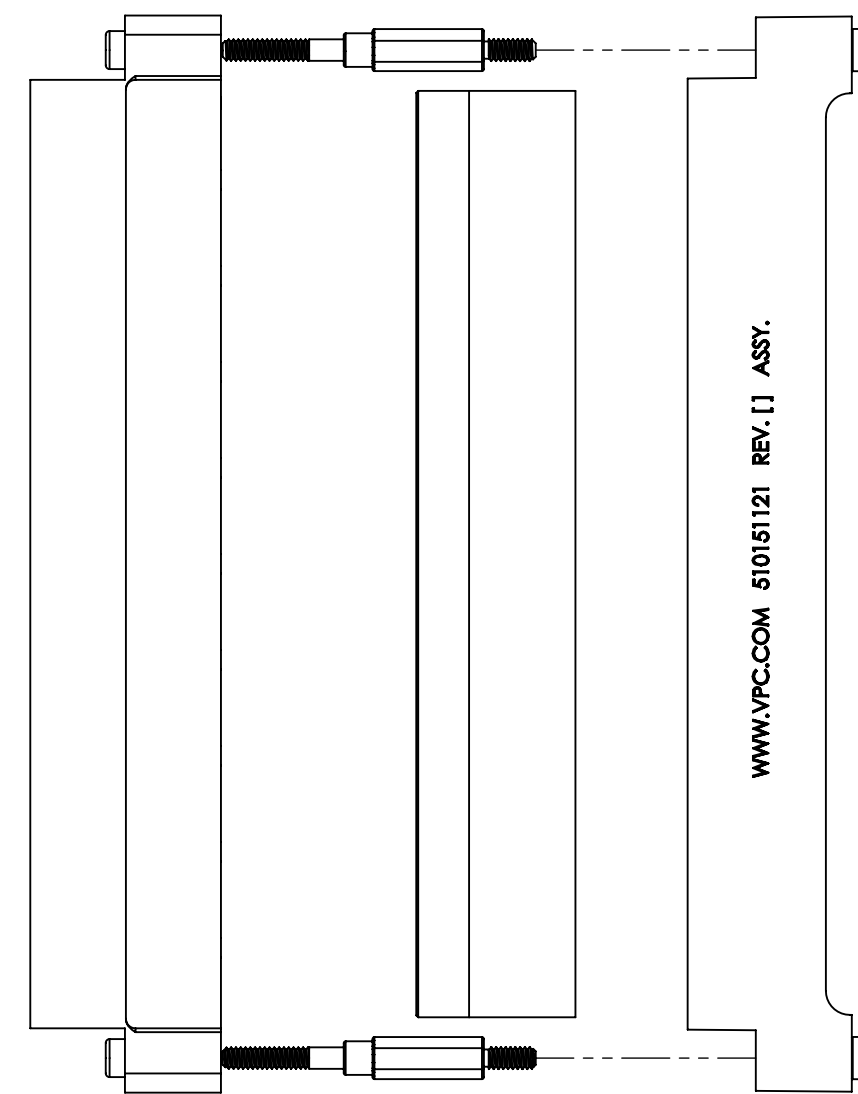
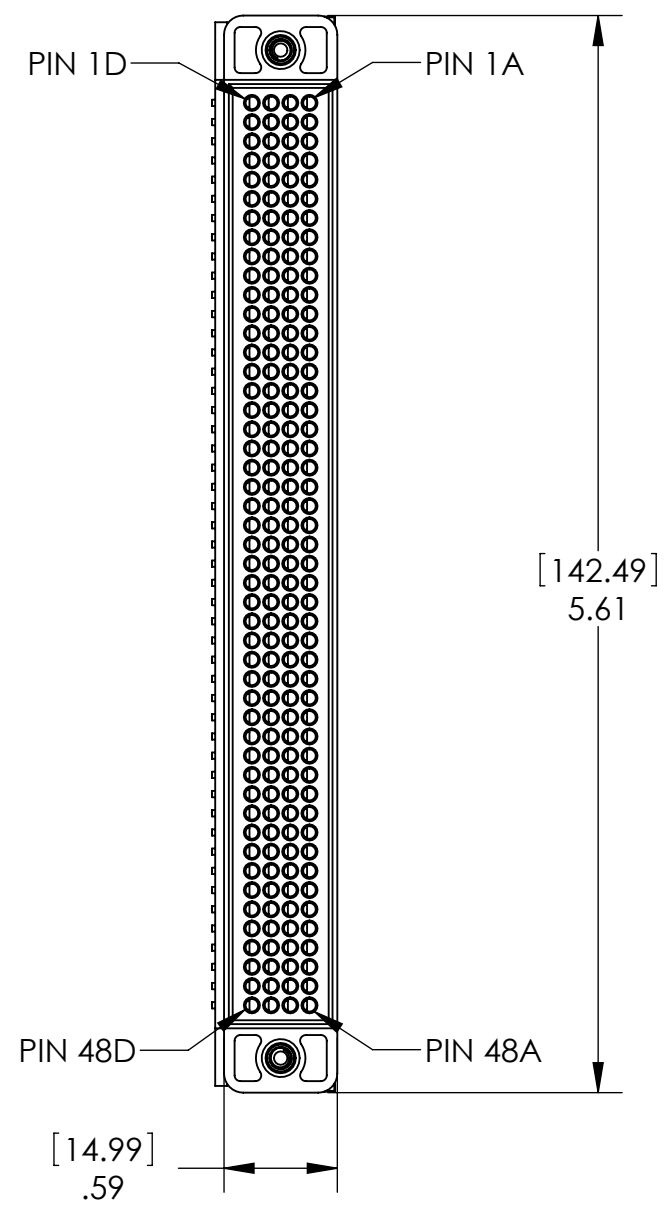
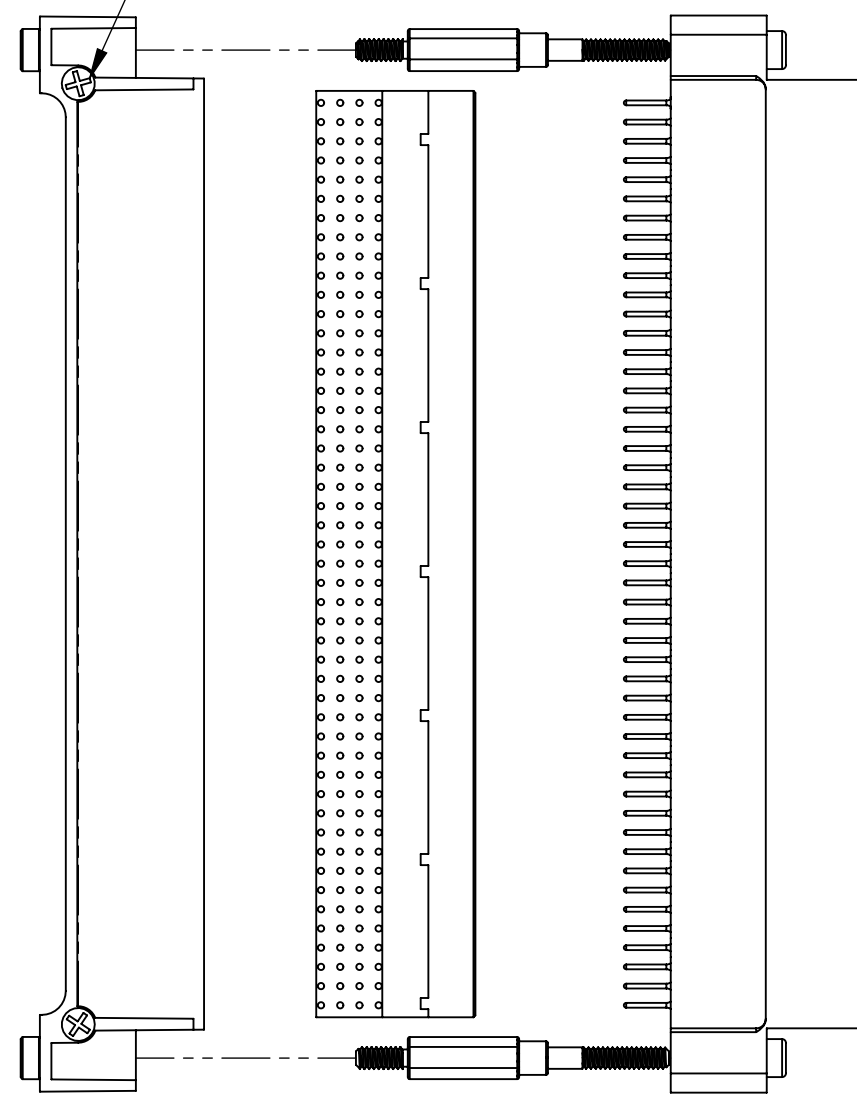
1

DO NOT SCALE DRAWING

THE INFORMATION CONTAINED HEREIN IS THE EXCLUSIVE PROPERTY OF VIRGINIA PANEL CORPORATION AND IS SUBMITTED FOR USE BY THE CUSTOMER ONLY. THE DATA SHALL NOT BE DUPLICATED, USED, OR DISCLOSED IN WHOLE OR IN PART FOR ANY PURPOSE OTHER THAN TO MAINTAIN THE EQUIPMENT PROVIDED. CONSULT WITH VIRGINIA PANEL CORPORATION ENGINEERING IF MORE DETAIL IS REQUIRED.

REVISIONS			
REV	DESCRIPTION	DATE	ENGR
F	ECN #4511	3/14/13	S MARSHALL

2-56 SCREWS PROVIDED FOR PCB MOUNTING. MAXIMUM TORQUE OF 2 IN-LBS [.225 N-m].



D

D

C

C

B

B

A

A

- NOTES:
- 4 SEE PAGE 2 FOR NOTES 5-8
 - 3 ALL NECESSARY HARDWARE FOR ASSEMBLY SUPPLIED IN KIT
 - 2 MATERIALS:
 HARDWARE: STAINLESS STEEL SCREWS
 BRASS ALLOY STANDOFFS Ni PLATED
 SHROUD: PEI
 HEADER - INSULATOR: GLASS FILLED PET BLACK THERMOPLASTIC
 CONTACT: PHOSPHOR BRONZE ALLOY
 CONTACT PLATING IN MATING AREA: .00003 in. Au OVER .00005 in. Ni
 - 1 FOR APPLICATION USE AND CARE INFORMATION CONSULT VPC USERS GUIDE @ WWW.VPC.COM

CUSTOMER DRAWING			
VIRGINIA PANEL CORPORATION			
WWW.VPC.COM			
SIGNAL MODULE, ITA, 192 POSITION QUADRAPADDLE			
with RIGHT ANGLE CONTACTS for CUSTOM PCB MOUNTING			
DIMENSIONS ARE SHOWN AS:	SIZE	CAGE CODE	DWG. NO.
[MILLIMETERS]	C	18117	510151121
INCHES	SCALE: NONE	510151121	6/6/06 SHEET 1 OF 2

4

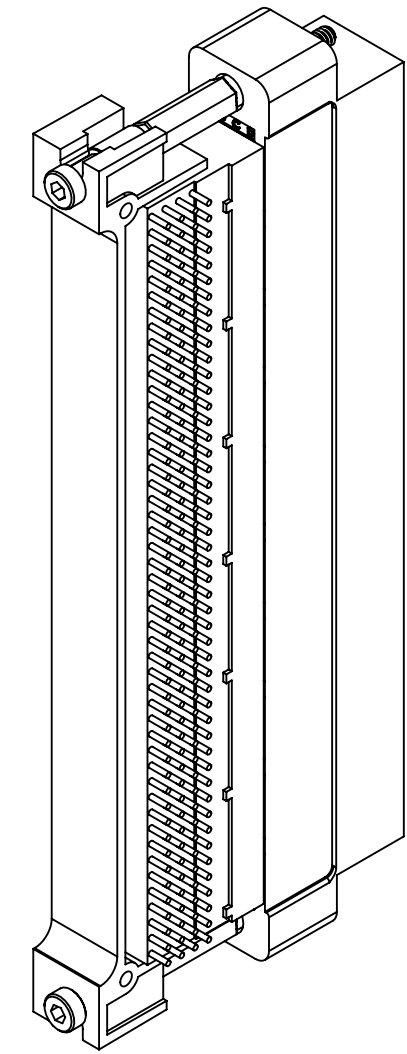
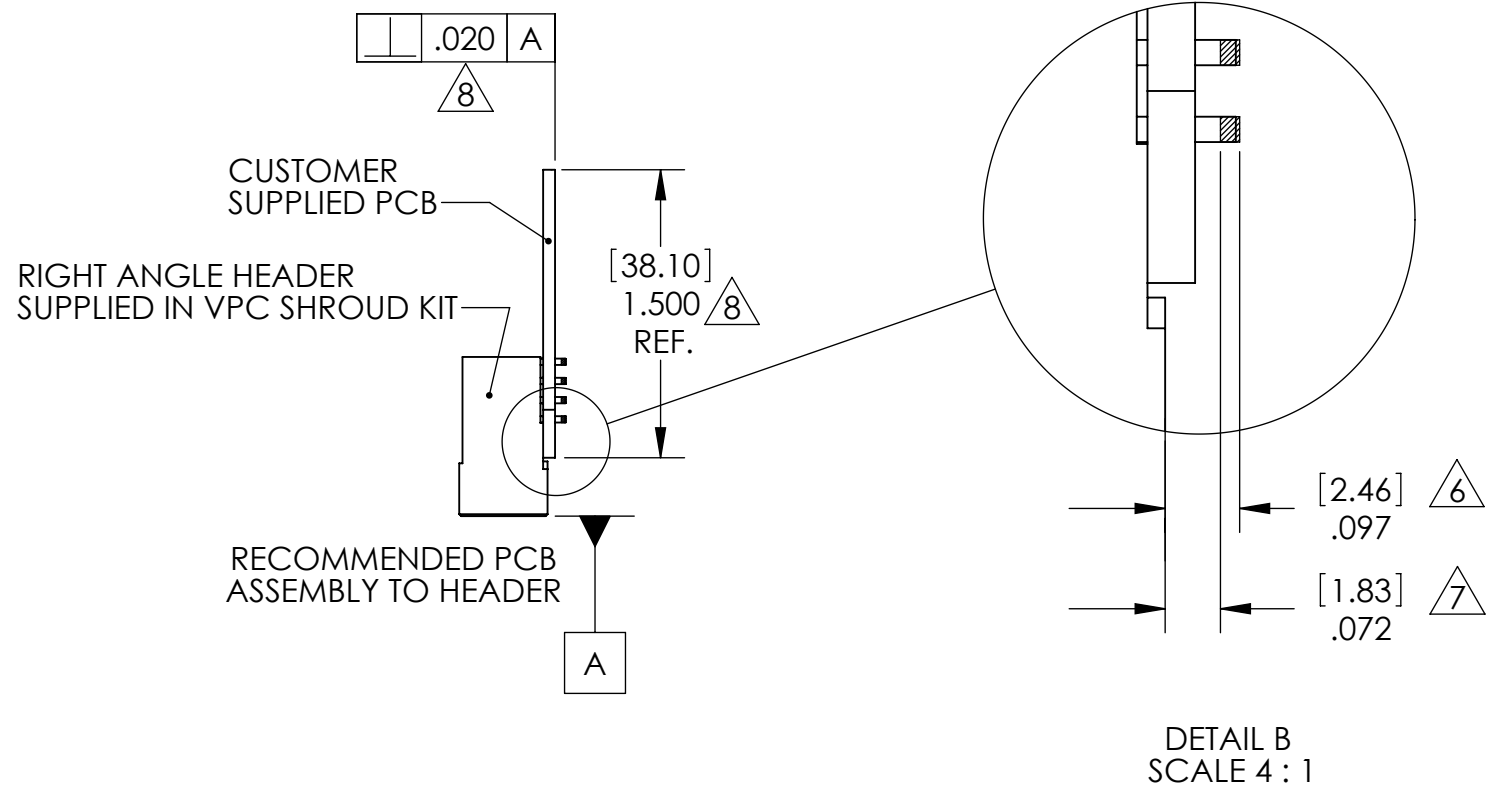
3

2

1

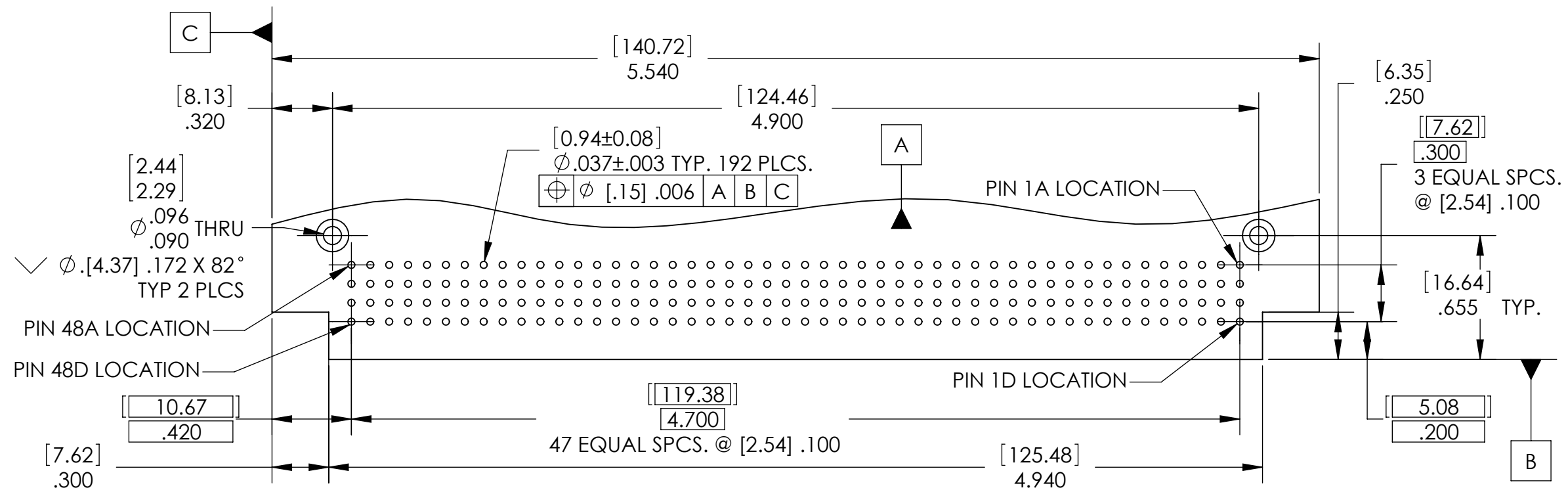
D

D



C

C



B

B

RECOMMENDED PCB LAYOUT
 CONNECTOR MOUNTS OPPOSITE SIDE
 BOARD THICKNESS = [1.57] .062
 DIMENSION TOLERANCE = ±[.13] .005
 UNLESS OTHERWISE SPECIFIED

A

A

- 8. .020 PERPENDICULARITY TOLERANCE APPLIES TO A TOLERANCE ZONE OF [38.10] 1.500 AS SHOWN. CALCULATE TOLERANCE ACCORDINGLY FOR VARYING BOARD HEIGHTS.
- 7. IF APPLICATION REQUIRES THE USE OF MULTIPLE PCB ADAPTORS AND THEY ARE INSTALLED SIDE BY SIDE IN THE ITA, A POST SOLDER TRIMMING OPERATION IS REQUIRED TO SHORTEN THE TAILS IN ORDER TO ELIMINATE INTERFERENCE BETWEEN ADJACENT ADAPTORS; TRIM TAILS TO LENGTH SHOWN (DIMENSION REPRESENTS MAXIMUM LENGTH AFTER TRIMMING) AND TRIM IN ACCORDANCE WITH IPC-A-610 STANDARD SECTION 6.5.1
- 6. APPROXIMATE TAIL LENGTH AS SUPPLIED BY VPC
- 5. CUSTOMER PCB MUST BE MANUFACTURED WITH (HEADER) INSTALLATION AREA COMPLYING TO RECOMMENDED PCB LAYOUT

DO NOT SCALE DRAWING

CUSTOMER DRAWING - CUSTOMER DRAWING - CUSTOMER DRAWING

THE INFORMATION CONTAINED HEREIN IS THE EXCLUSIVE PROPERTY OF VIRGINIA PANEL CORPORATION AND IS SUBMITTED FOR USE BY THE CUSTOMER ONLY. THE DATA SHALL NOT BE DUPLICATED, USED, OR DISCLOSED IN WHOLE OR IN PART FOR ANY PURPOSE OTHER THAN TO MAINTAIN THE EQUIPMENT PROVIDED.				SIZE C	CAGE CODE 18117	DWG. NO. 510151121	REV F
				SCALE: NONE	510151121	6/6/06	SHEET 2 OF 2