

# GCJ188R72A103KA01#

“#” at the end indicates the package specification code.

● In Production

Soft Termination Chip Multilayer Ceramic Capacitors for Automotive Powertrain/Safety Equipment

## GCJ188R72A103KA01#

“#” at the end indicates the package specification code.



GCJ188R72A103KA01D,GCJ188R72A103KA01J

### Applications

Unsuitable Applications	Please be sure to read and comply with these " <u>Precautions for use</u> ".
Specific Applications	<u>Automotive infotainment/comfort equipment, Automotive powertrain/safety equipment, Medical equipment [GHTF A/B/C] except for implant equipment</u>  Please refer to Our Website and specifications, etc. for information about the performance, functions, quality, management, and safety required for the above applications, and use Products after confirming the performance and reliability of the actual Product.

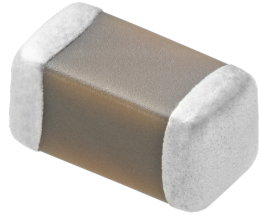
### Attention

1. This datasheet is downloaded from the website of Murata Manufacturing Co., Ltd. Therefore, it's specifications are subject to change or our products in it may be discontinued without advance notice. Please check with our sales representatives or product engineers before ordering.
2. This datasheet has only typical specifications because there is no space for detailed specifications.  
Therefore, please review our product specifications or consult the approval sheet for product specifications before ordering.

# GCJ188R72A103KA01#

“#” at the end indicates the package specification code.

## Appearance & Shape



Chip size code (mm/inch)	1608M/0603
Length	1.6mm ±0.2mm
Width	0.8mm ±0.1mm
Thickness	0.8mm ±0.1mm
External terminal size€	0.2 ~ 0.5mm

### Attention

1. This datasheet is downloaded from the website of Murata Manufacturing Co., Ltd. Therefore, it's specifications are subject to change or our products in it may be discontinued without advance notice. Please check with our sales representatives or product engineers before ordering.
2. This datasheet has only typical specifications because there is no space for detailed specifications.  
 Therefore, please review our product specifications or consult the approval sheet for product specifications before ordering.

# GCJ188R72A103KA01#

“#” at the end indicates the package specification code.

## Specifications

Temperature characteristics (complied standard)	EIA
Temperature characteristics	X7R
Temperature range of temperature characteristics	-55 ~ 125°C
Operating Temperature	-55 ~ 125°C
Capacitance	10,000pF
Tolerance of capacitance	±10%
Rated Voltage DC	100Vdc

### Attention

1. This datasheet is downloaded from the website of Murata Manufacturing Co., Ltd. Therefore, it's specifications are subject to change or our products in it may be discontinued without advance notice. Please check with our sales representatives or product engineers before ordering.
2. This datasheet has only typical specifications because there is no space for detailed specifications.  
Therefore, please review our product specifications or consult the approval sheet for product specifications before ordering.


# GCJ188R72A103KA01#

“#”at the end indicates the package specification code.

## Notices

Resin external electrode products

## References

Packaging	Specifications 	Standard Packing Quantity
D	φ180mm Reel W8P4* Paper Tape	4000
J	φ330mm Reel W8P4* Paper Tape	10000

Mass(Typ.)	
1 piece	6.3mg

### Attention

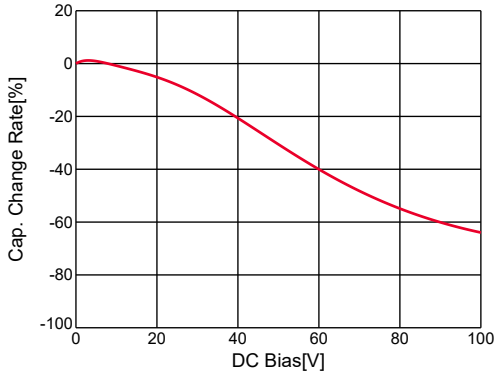
1. This datasheet is downloaded from the website of Murata Manufacturing Co., Ltd. Therefore, it's specifications are subject to change or our products in it may be discontinued without advance notice. Please check with our sales representatives or product engineers before ordering.
2. This datasheet has only typical specifications because there is no space for detailed specifications.  
Therefore, please review our product specifications or consult the approval sheet for product specifications before ordering.

# GCJ188R72A103KA01#

“#” at the end indicates the package specification code.

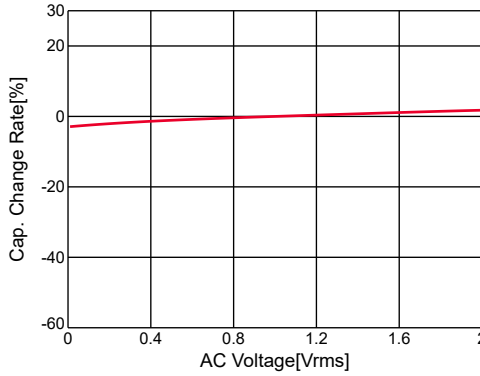
## Basic

### C-DC bias(Cap Change)



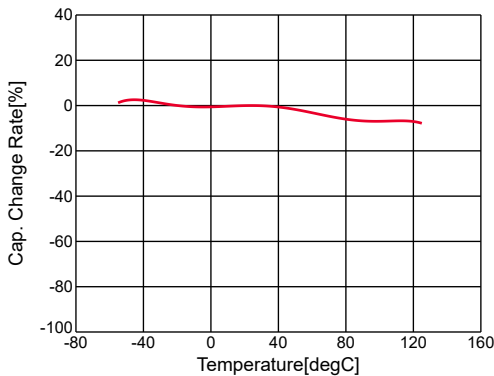
GCJ188R72A103KA01#,C-DC bias,capchange, 25.0degC, AC1.0Vrms

### C-AC voltage(Cap Change)



GCJ188R72A103KA01#,C-AC Voltage,capchange, DC0V, 25.0degC

### C-Temp.(Cap Change)



GCJ188R72A103KA01#,C-Temp.,capchange, DC0.0V, AC1.0Vrms

## Attention

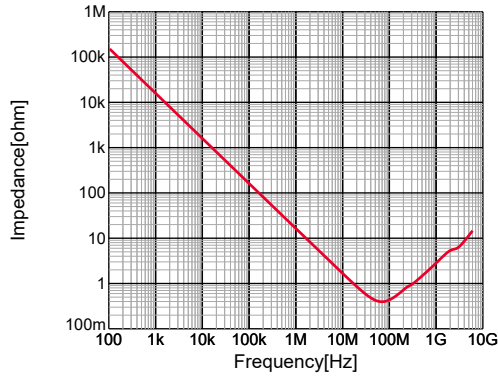
1. This datasheet is downloaded from the website of Murata Manufacturing Co., Ltd. Therefore, its specifications are subject to change or our products in it may be discontinued without advance notice. Please check with our sales representatives or product engineers before ordering.
2. This datasheet has only typical specifications because there is no space for detailed specifications. Therefore, please review our product specifications or consult the approval sheet for product specifications before ordering.

# GCJ188R72A103KA01#

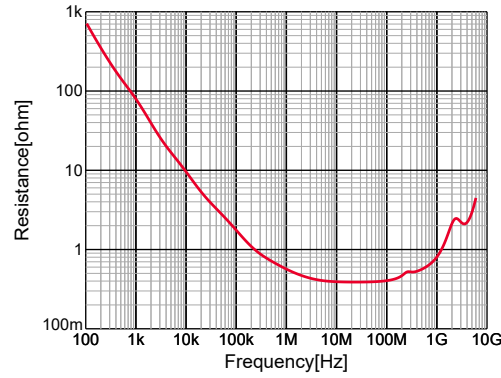
“#” at the end indicates the package specification code.

## Frequency Characteristic

|Z|



R

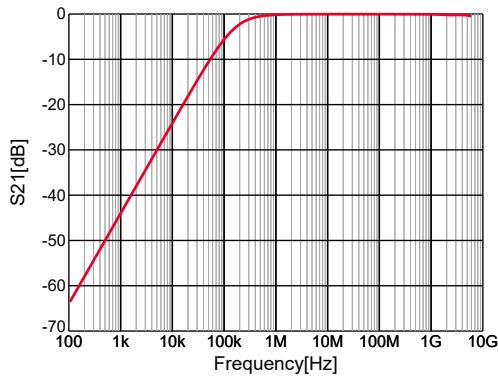


GCJ188R72A103KA01#,|Z|,DC0V,25degC

GCJ188R72A103KA01#,R,DC0V,25degC

## S-parameter

S21



GCJ188R72A103KA01#,S21,DC0V,25degC,series

### Attention

1. This datasheet is downloaded from the website of Murata Manufacturing Co., Ltd. Therefore, its specifications are subject to change or our products in it may be discontinued without advance notice. Please check with our sales representatives or product engineers before ordering.
2. This datasheet has only typical specifications because there is no space for detailed specifications. Therefore, please review our product specifications or consult the approval sheet for product specifications before ordering.