

GCJ32EC71H106MA01#

“#” at the end indicates the package specification code.

● In Production

Soft Termination Chip Multilayer Ceramic Capacitors for Automotive Powertrain/Safety Equipment

GCJ32EC71H106MA01#

“#” at the end indicates the package specification code.



GCJ32EC71H106MA01L,GCJ32EC71H106MA01K

Applications

Unsuitable Applications	Please be sure to read and comply with these " <u>Precautions for use</u> ".
Specific Applications	<u>Automotive infotainment/comfort equipment, Automotive powertrain/safety equipment, Medical equipment [GHTF A/B/C] except for implant equipment</u> Please refer to Our Website and specifications, etc. for information about the performance, functions, quality, management, and safety required for the above applications, and use Products after confirming the performance and reliability of the actual Product.

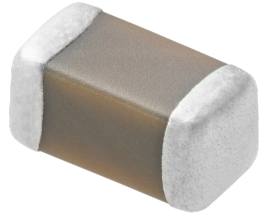
Attention

1. This datasheet is downloaded from the website of Murata Manufacturing Co., Ltd. Therefore, its specifications are subject to change or our products in it may be discontinued without advance notice. Please check with our sales representatives or product engineers before ordering.
2. This datasheet has only typical specifications because there is no space for detailed specifications.
Therefore, please review our product specifications or consult the approval sheet for product specifications before ordering.

GCJ32EC71H106MA01#

“#” at the end indicates the package specification code.

Appearance & Shape



Chip size code (mm/inch)	3225M/1210
Length	3.2mm ±0.4mm
Width	2.5mm ±0.3mm
Thickness	2.5mm ±0.3mm
External terminal size€	0.3mm Min.

Attention

1. This datasheet is downloaded from the website of Murata Manufacturing Co., Ltd. Therefore, it's specifications are subject to change or our products in it may be discontinued without advance notice. Please check with our sales representatives or product engineers before ordering.
2. This datasheet has only typical specifications because there is no space for detailed specifications.
 Therefore, please review our product specifications or consult the approval sheet for product specifications before ordering.

GCJ32EC71H106MA01#

“#” at the end indicates the package specification code.

Specifications

Temperature characteristics (complied standard)	EIA
Temperature characteristics	X7S
Temperature range of temperature characteristics	-55 ~ 125°C
Operating Temperature	-55 ~ 125°C
Capacitance	10μF
Tolerance of capacitance	±20%
Rated Voltage DC	50Vdc

Attention

1. This datasheet is downloaded from the website of Murata Manufacturing Co., Ltd. Therefore, it's specifications are subject to change or our products in it may be discontinued without advance notice. Please check with our sales representatives or product engineers before ordering.
2. This datasheet has only typical specifications because there is no space for detailed specifications.
Therefore, please review our product specifications or consult the approval sheet for product specifications before ordering.


GCJ32EC71H106MA01#

“#”at the end indicates the package specification code.

Notices

Resin external electrode products

References

Packaging	Specifications 	Standard Packing Quantity
L	φ180mm Reel Embossed Tape	1000
K	φ330mm Reel Embossed Tape	4000

Mass(Typ.)	
1 piece	110mg

Attention

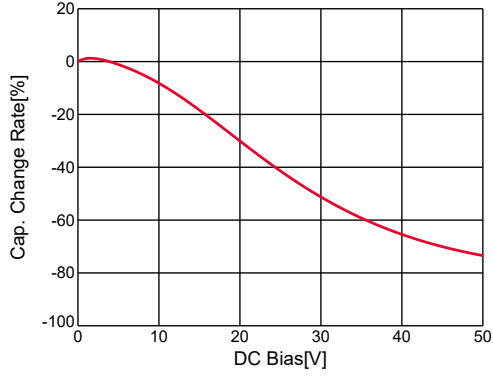
1. This datasheet is downloaded from the website of Murata Manufacturing Co., Ltd. Therefore, it's specifications are subject to change or our products in it may be discontinued without advance notice. Please check with our sales representatives or product engineers before ordering.
2. This datasheet has only typical specifications because there is no space for detailed specifications.
Therefore, please review our product specifications or consult the approval sheet for product specifications before ordering.

GCJ32EC71H106MA01#

"#" at the end indicates the package specification code.

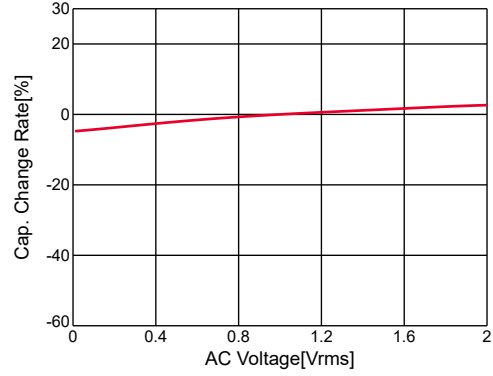
Basic

C-DC bias(Cap Change)



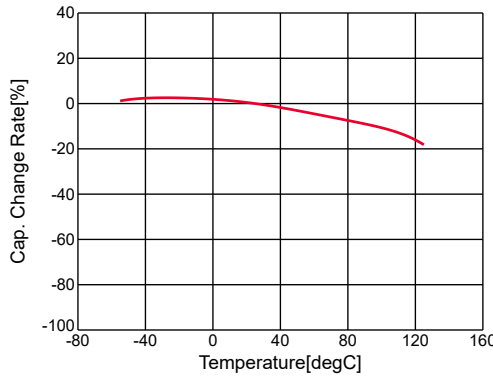
GCJ32EC71H106MA01#,C-DC bias,capchange, 25.0degC, AC1.0Vrms

C-AC voltage(Cap Change)



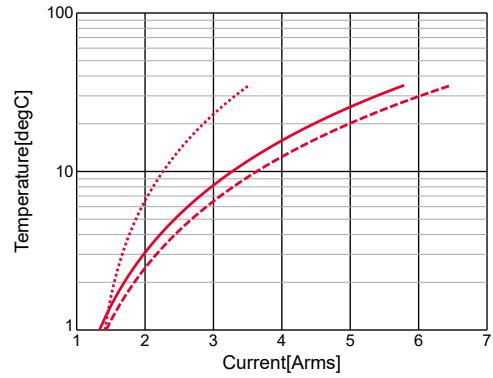
GCJ32EC71H106MA01#,C-AC Voltage,capchange, DC0V, 25.0degC

C-Temp.(Cap Change)



GCJ32EC71H106MA01#,C-Temp.,capchange, DC0.0V, AC1.0Vrms

Temp.rise



GCJ32EC71H106MA01#,Temp.rise

- 80kHz
- 400kHz
- 800kHz

Attention

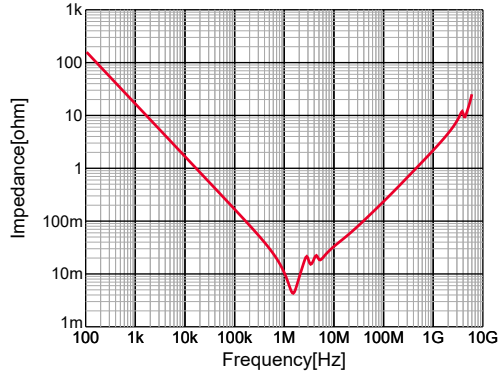
- This datasheet is downloaded from the website of Murata Manufacturing Co., Ltd. Therefore, its specifications are subject to change or our products in it may be discontinued without advance notice. Please check with our sales representatives or product engineers before ordering.
- This datasheet has only typical specifications because there is no space for detailed specifications. Therefore, please review our product specifications or consult the approval sheet for product specifications before ordering.

GCJ32EC71H106MA01#

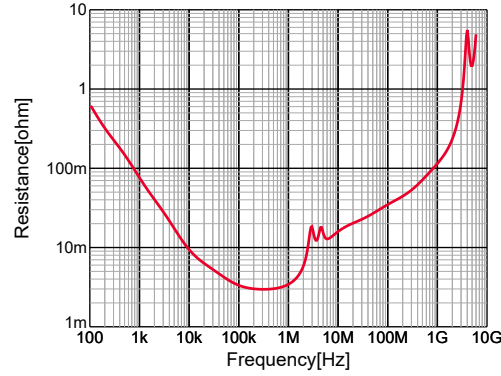
“#” at the end indicates the package specification code.

Frequency Characteristic

|Z|



R



GCJ32EC71H106MA01#,|Z|,DC0V,25degC

GCJ32EC71H106MA01#,R,DC0V,25degC

Attention

1. This datasheet is downloaded from the website of Murata Manufacturing Co., Ltd. Therefore, its specifications are subject to change or our products in it may be discontinued without advance notice. Please check with our sales representatives or product engineers before ordering.
2. This datasheet has only typical specifications because there is no space for detailed specifications. Therefore, please review our product specifications or consult the approval sheet for product specifications before ordering.